



Top 5 Summary

# PROJECT SUMMARY

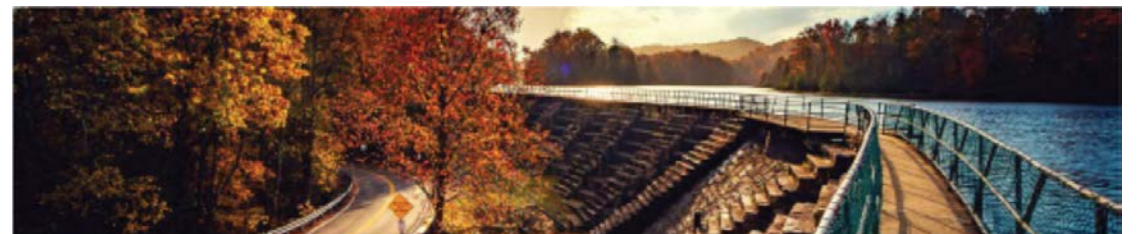
---

## Neighborhood Commission

- Volunteer Driven
- Costs borne by Current Staffing
- Up and Running with 5+ meetings already held at different locations throughout the city

## Bays Mountain Park Upgrades

- Capital Costs Currently Budgeted thru FY24 = \$8,889,000
- Completed Lily Pad Cove
- Projects underway include: New designs for animal habitats, new entries, infrastructure rehab



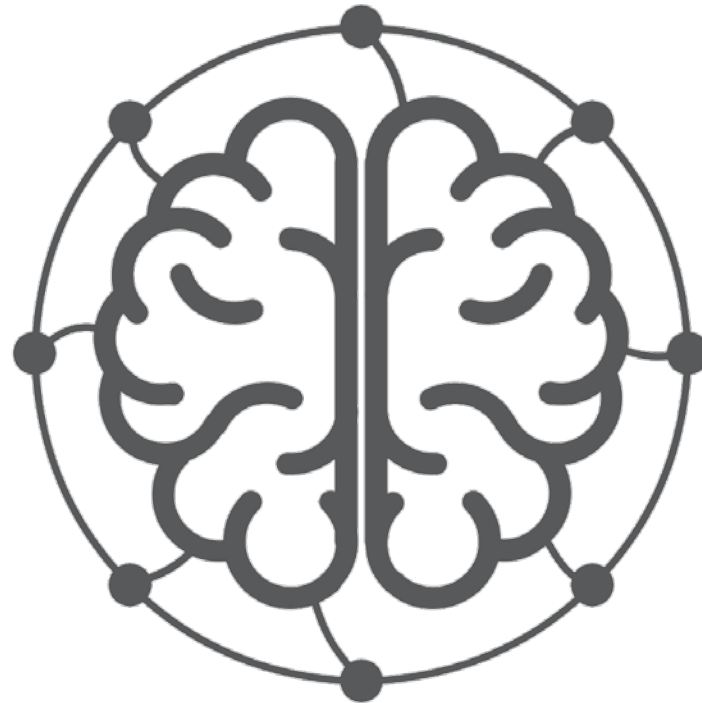
# PROJECT SUMMARY

## Limited Costs and Potential Revenues

---

### Inventor Center

- Self-Sufficient by FY23
- ONEKingsport Funding Approved - \$519,000 Over 5 FY
- Capital investments Primarily in Building Improvement and Machinery at 112 Shelby
- Building Design complete – Plans approved with permits pending contractor





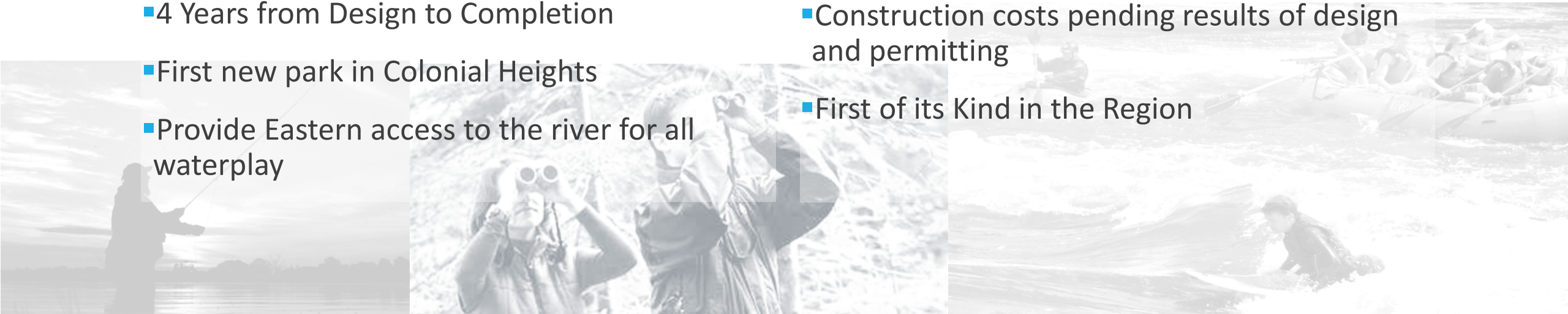
# PROJECT SUMMARY

## Limited Costs and Potential Private Sponsorships

---

### Rediscovering the Riverfront

- **Riverbend Park: Masterplan Complete**
- **Funding requested from TVA and TDEC**
- **Phase I to begin in FY 19**
- **4 Years from Design to Completion**
- **First new park in Colonial Heights**
- **Provide Eastern access to the river for all waterplay**
- **Whitewater Park: Study complete**
- **Engineering study for design in FY 19**
- **2 Years from Design to Construction permits**
- **Construction costs pending results of design and permitting**
- **First of its Kind in the Region**



# PROJECT SUMMARY

## Limited Costs and Potential Private Sponsorships

---

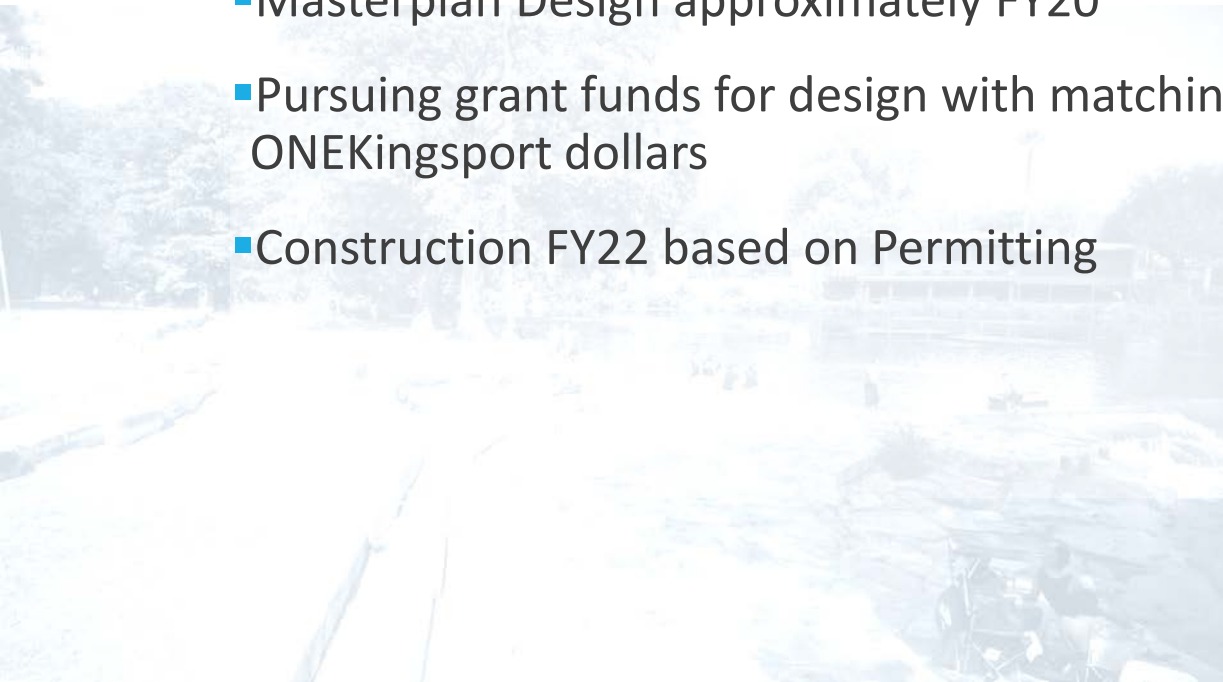
### Rediscovering the Riverfront

#### ■ The Landings Park:

- Masterplan Design approximately FY20
- Pursuing grant funds for design with matching ONEKingsport dollars
- Construction FY22 based on Permitting

#### ■ Riverfront Park Upgrade:

- Pursuing additional small grants
- Anticipated Grant Funds: \$75,000 with ONEKingsport matching



# PROJECT SUMMARY

## Limited Costs and Potential Private Sponsorships

---

### Downtown Playground

- **Venue & Parking:**

- Scaling back for more casual atmosphere and quick usage
- Temporary lighting, staging and parking to better prepare final design and permanent facilities

- **Roadway Extension at Martin Luther King Blvd:**

- Future CIP Budget
- Design completion anticipated FY19 or FY20

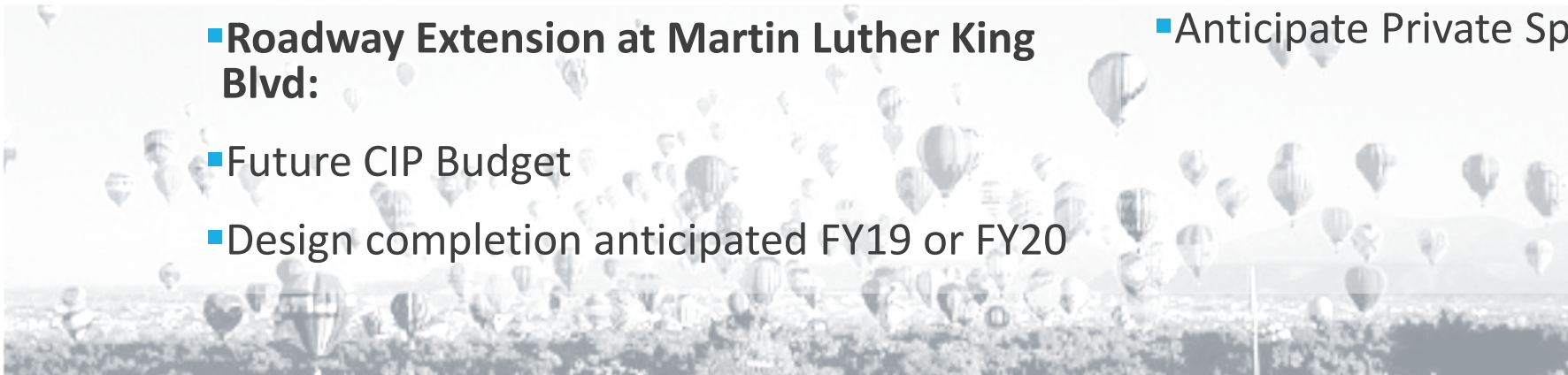
- **Brickyard Park Miracle Field:**

- **Currently raised \$1.5M of needed funds**

- Private Sponsor Funds anticipated at approx. \$2,100,000

- **Permanent Stage: \$330,000**

- Anticipate Private Sponsor Funding



# Next Steps

---



Review of  
Recommended  
Funding Strategy



Receive vetted  
Funding Plan  
coordinated w/  
Current CIP/Budget