

DRAFT

TENNESSEE
DEPARTMENT OF TRANSPORTATION



DRAFT

ORIGINAL SUBMITTAL

DATE:

07-31-14

REVISION DATES:

ROAD SAFETY AUDIT REPORT

S.R. 36

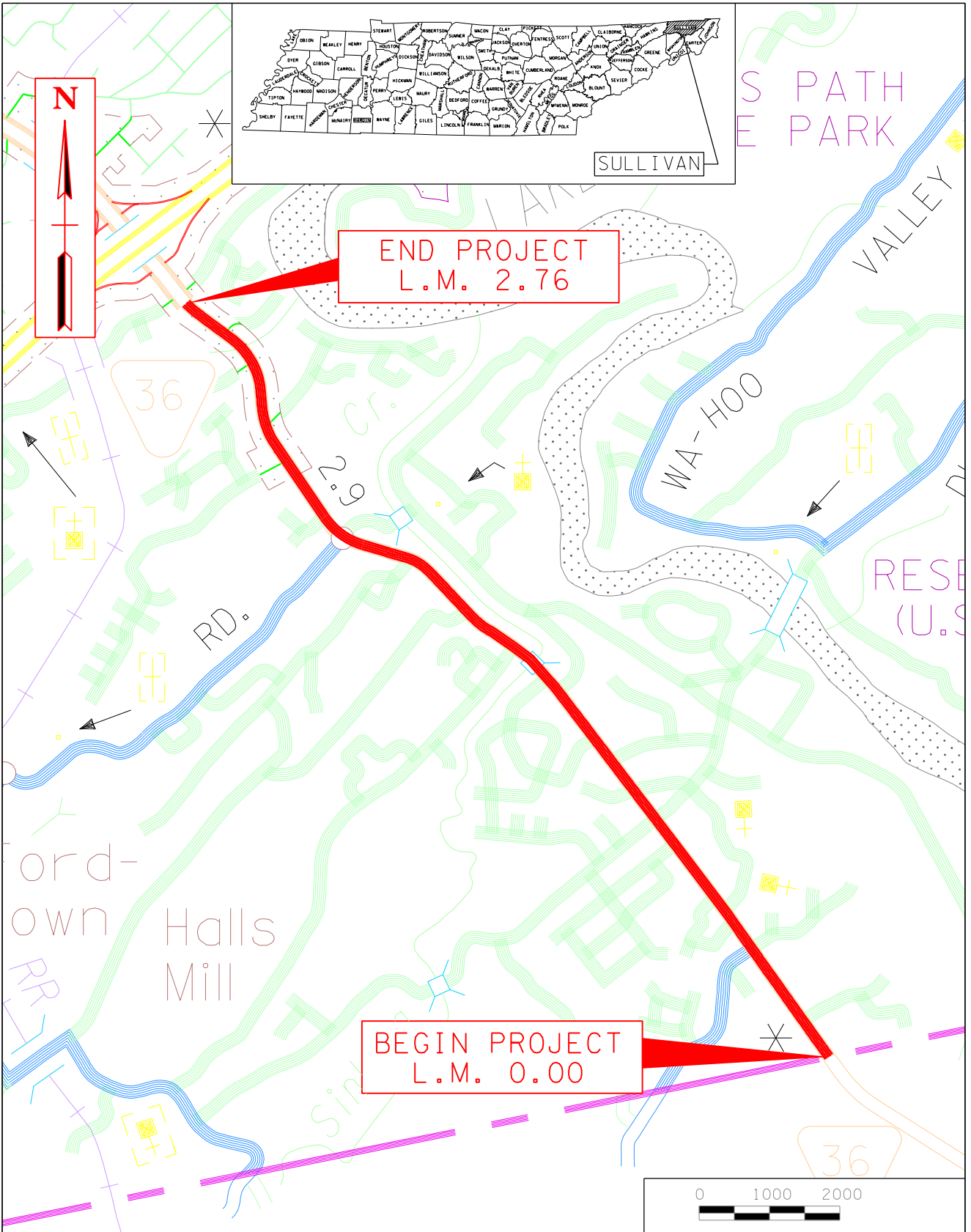
**From: Washington County Line to North of Lakeside Lane,
(Log Mile 0.00 to Log Mile 2.76),
Sullivan County
PIN#119984.00**

**PREPARED BY GRESHAM, SMITH AND PARTNERS
for the
Strategic Transportation Investments Division**

Recommended by:	Signature	DATE
TRANSPORTATION DIRECTOR STRATEGIC TRANSPORTATION INVESTMENTS DIVISION		

This document is covered by 23 USC § 409 and its production pursuant to fulfilling public planning requirements does not waive the provisions of § 409.

DRAFT

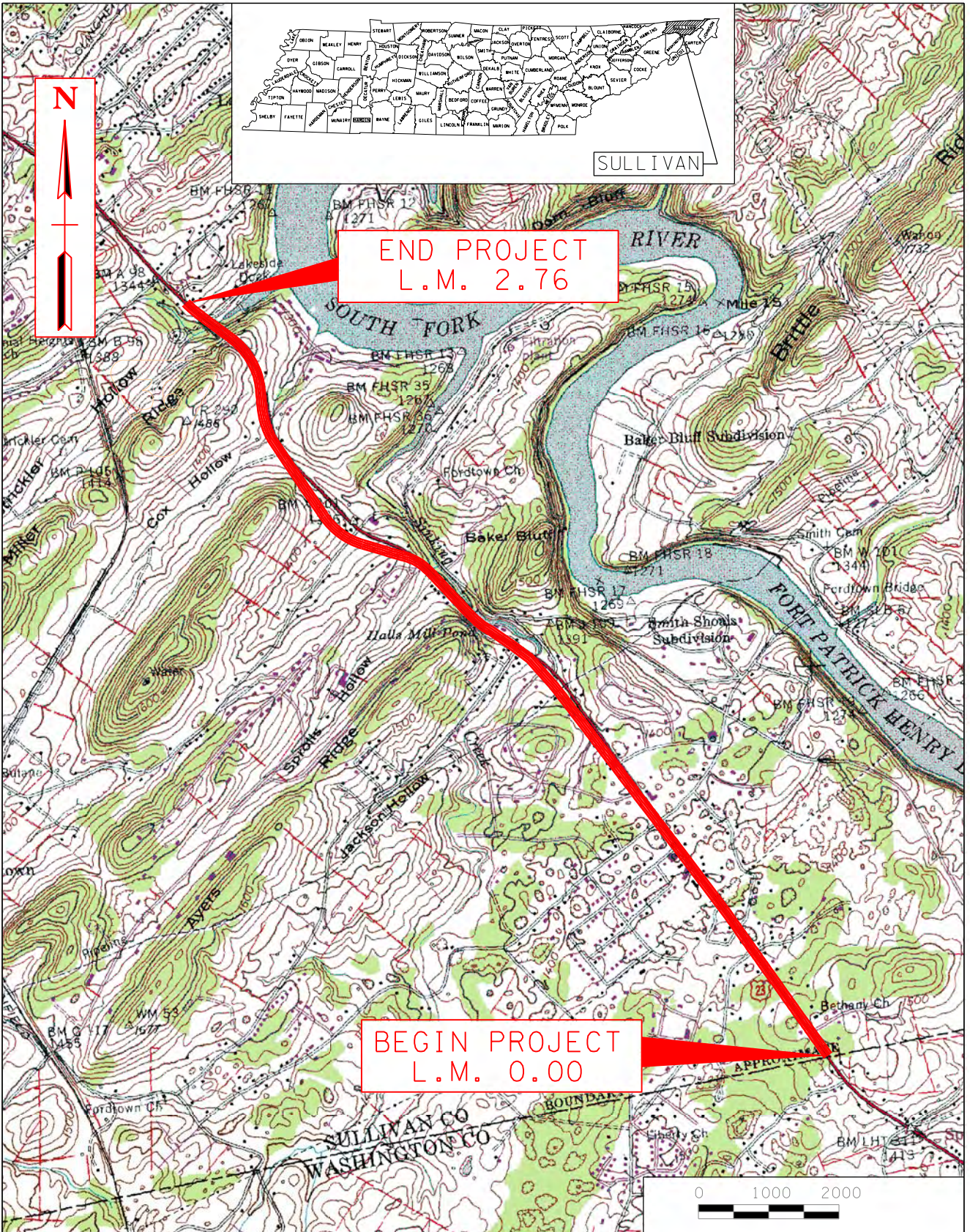


LOCATION MAP

S.R. 36
L.M. 0.00 TO L.M. 2.76
SULLIVAN COUNTY

DRAWN BY:	CHECKED BY:
PL	SS
S.R. 36	
PIN 119984.00	
SCALE:	DATE:
1"= 2000'	07-01-14

DRAFT

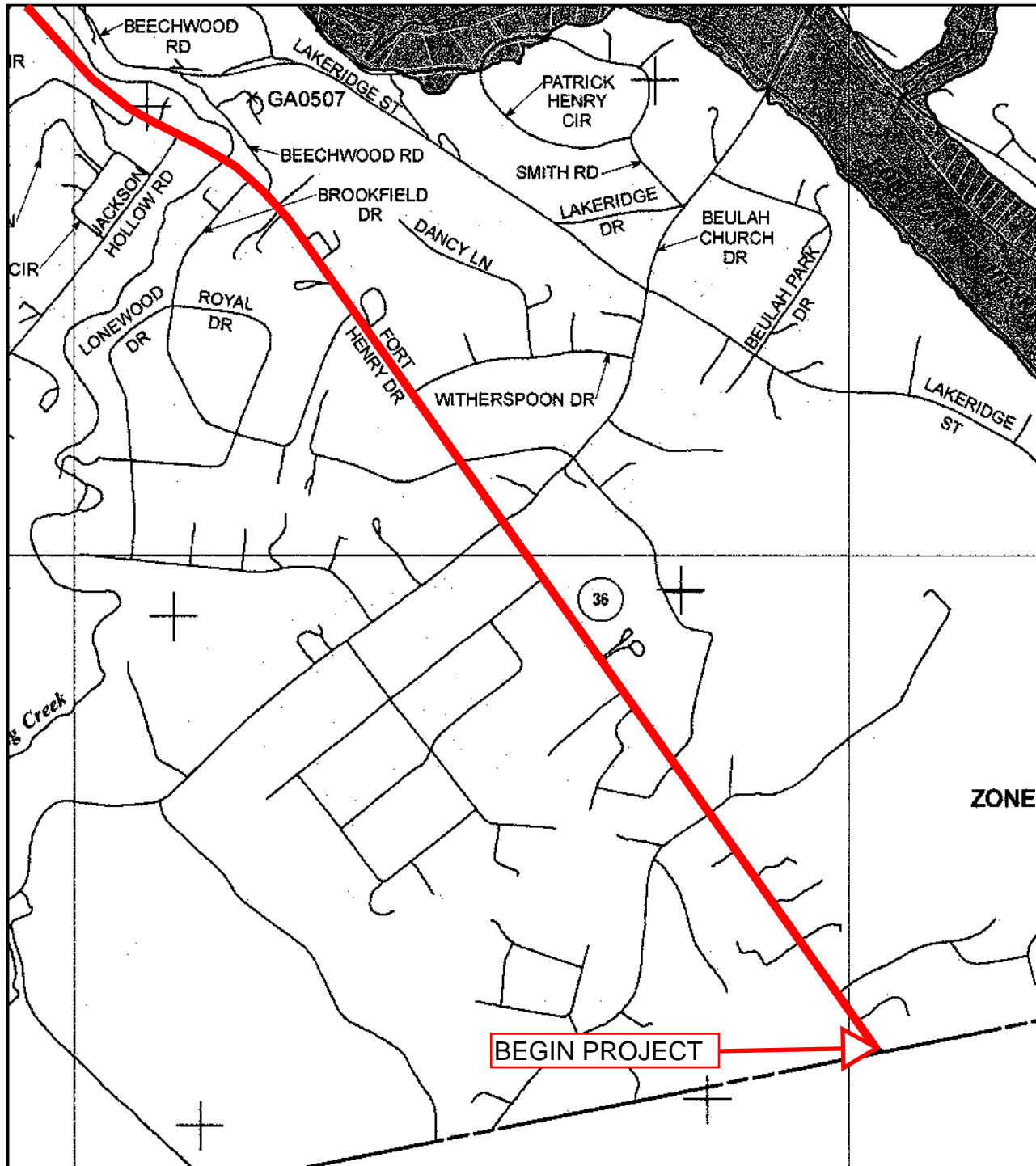


VICINITY MAP

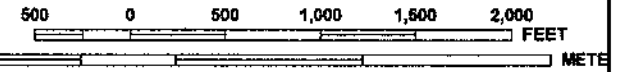
S.R. 36
L.M. 0.00 TO L.M. 2.76
SULLIVAN COUNTY

DRAWN BY:	CHECKED BY:
PL	SS
S.R. 36	
PIN 119984.00	
SCALE:	DATE:
1" = 2000'	07-01-14

DRAFT



MAP SCALE 1" = 1000'



PANEL 0255D

FIRM
FLOOD INSURANCE RATE MAP
SULLIVAN COUNTY,
TENNESSEE
AND INCORPORATED AREAS

PANEL 255 OF 375

(SEE MAP INDEX FOR FIRM PANEL LAYOUT)

CONTAINS:

COMMUNITY	NUMBER	PANEL	SUFFIX
KINGSPORT, CITY OF	470184	0255	D
SULLIVAN COUNTY	470181	0255	D

Notice to User: The Map Number shown below should be used when placing map orders; the Community Number shown above should be used on insurance applications for the subject community.

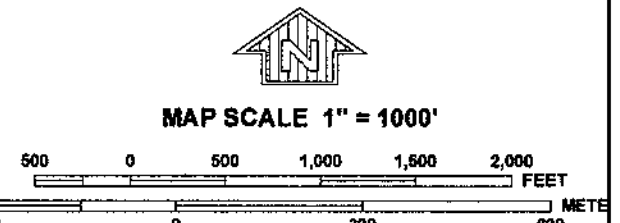
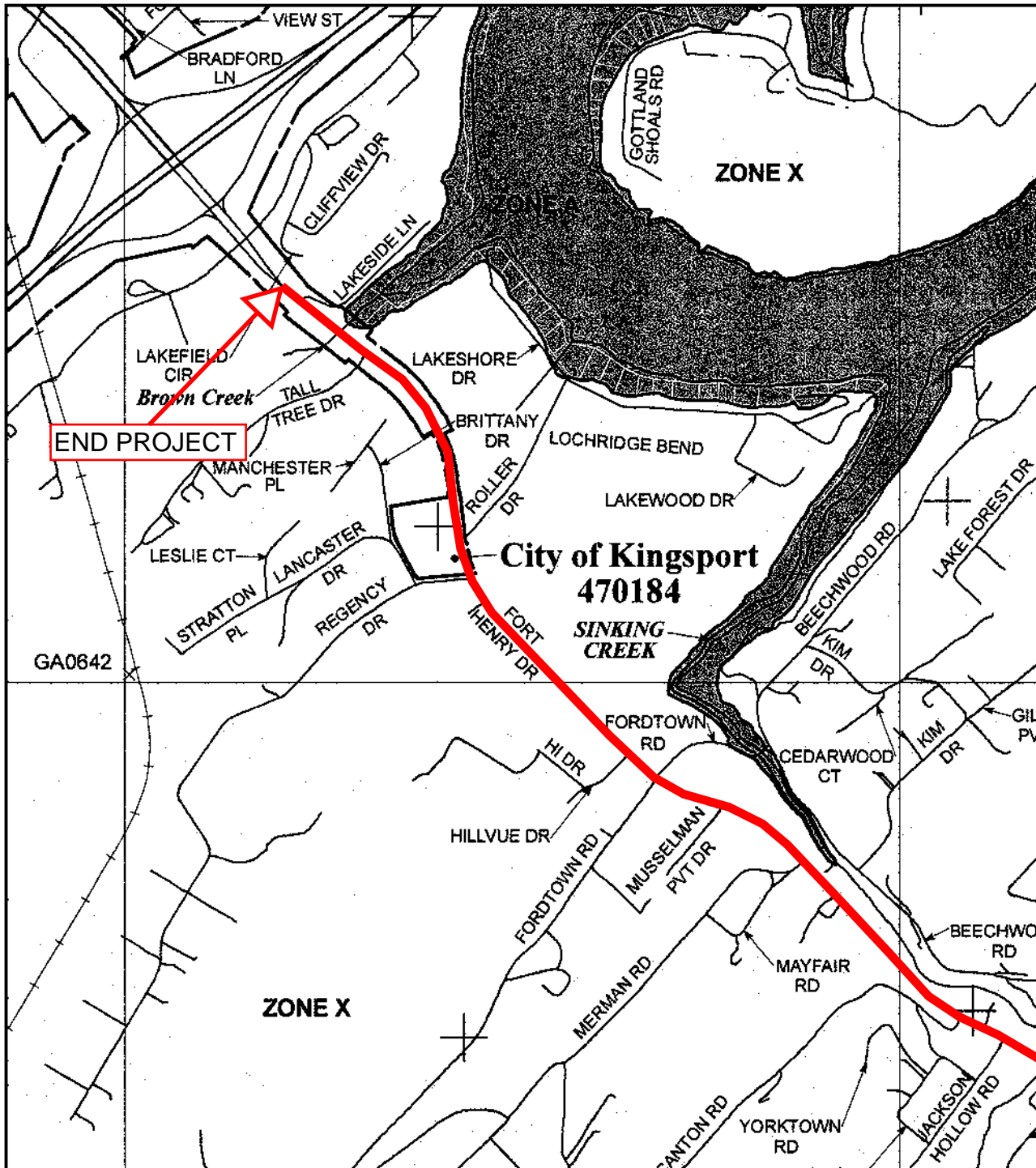
MAP NUMBER
47163C0255D



EFFECTIVE DATE
SEPTEMBER 29, 2006

Federal Emergency Management Agency

This is an official copy of a portion of the above referenced flood map. It was extracted using F-MIT On-Line. This map does not reflect changes or amendments which may have been made subsequent to the date on the title block. For the latest product information about National Flood Insurance Program flood maps check the FEMA Flood Map Store at www.msc.fema.gov



NATIONAL FLOOD INSURANCE PROGRAM

PANEL 0255D

FIRM

FLOOD INSURANCE RATE MAP

SULLIVAN COUNTY, TENNESSEE

AND INCORPORATED AREAS

PANEL 255 OF 375

(SEE MAP INDEX FOR FIRM PANEL LAYOUT)

CONTAINS:

COMMUNITY	NUMBER	PANEL	SUFFIX
KINGSPORT, CITY OF	470184	0255	D
SULLIVAN COUNTY	470181	0255	D

Notice to User: The Map Number shown below should be used when placing map orders; the Community Number shown above should be used on insurance applications for the subject community.

MAP NUMBER
47163C0255D



EFFECTIVE DATE
SEPTEMBER 29, 2006

Federal Emergency Management Agency

This is an official copy of a portion of the above referenced flood map. It was extracted using F-MIT On-Line. This map does not reflect changes or amendments which may have been made subsequent to the date on the title block. For the latest product information about National Flood Insurance Program flood maps check the FEMA Flood Map Store at www.msc.fema.gov

Sullivan County
S.R. 36
L.M. 0.00-L.M. 2.76
PIN: 119984.00

PROJECT DESCRIPTION AND BACKGROUND

This project was identified through the Tennessee Department of Transportation (TDOT) safety needs identification process. The section of State Route (S.R.) 36 from log mile (L.M.) 0.00 to L.M. 2.76 is a two (2) lane rural roadway with twelve (12) foot travel lanes and predominantly two (2) to five (5) foot asphalt shoulders and a southbound truck lane at the Washington County line. S.R. 36 was added to the Hazard Elimination Safety Program (HESP) list because S.R. 36 has a severe crash rate of 0.142, which exceeds the statewide average severe crash rate of 0.093 for an Urban Other Principal Arterial.

There were a total of sixty-eight (101) crashes that occurred along S.R. 36 between 2010 to 2013, with two (2) fatality crashes involving two (2) fatalities, three (3) incapacitating injury crashes involving three (3) incapacitating injuries, thirty-three (33) non-incapacitating injury crashes, and sixty-three (63) property damage.

ROAD SAFETY AUDIT (RSA) TEAM MEMBERS

NAME	ORG.	PHONE #	EMAIL
Jeremy Bowlan	TDOT	615-532-7123	jeremy.bowlan@tn.gov
Stacy Weaver	TDOT – Reg. 1	865-594-2442	stacy.weaver@tn.gov
Bill Albright	Kingsport MTPO	423-224-2677	billalbright@kingsporttn.gov
Troy Ebbert	Kingsport MTPO	423-224-9332	troyebbert@kingsporttn.gov
Tim Elsea	City of Kingsport	423-224-2426	timelsea@kingsporttn.gov
Matt Givens	TDOT	615-532-4802	matthew.givens@tn.gov
Jay Morgan	TDOT – Reg. 1	865-594-0714	jay.morgan@tn.gov
Rick Kilby	TDOT – Reg. 1	423-282-0136	ricky.r.kilby@tn.gov
Nathan Vatter	TDOT – Reg. 1	865-594-2456	nathan.vatter@tn.gov
Chris Craig	First TN RPO	423-722-5091	ccraig@ftdd.org
Shap Stiles	GS&P	865-521-6777	shap_stiles@gspnet.com
Patrick Fiveash	GS&P	865-521-6777	Patrick_fiveash@gspnet.com

INFORMATION USED IN REVIEW

- Crash Reports
- Field Review Comments
- TRIMS Crash Data (2010-2013)
- TRIMS Geometric Report
- Aerial Photographs
- Crash Summary
- County Highway Maps
- TRIMS Route Feature Report
- TRIMS Road Segment Report

PRE-BRIEF MEETING SUMMARY

A Pre-brief meeting was held at TDOT Headquarters at 1:00 P.M. on June 16, 2014. A summary of the topics and information discussed at the meeting is provided below:

1. Discussed Crash history and types of crashes.

Sullivan County
S.R. 36
L.M. 0.00-L.M. 2.76
PIN: 119984.00

- Majority are rear-end crashes.
- 2. AADT is 12,374 vehicles per day on S.R. 36.
- 3. Intersection with Fordtown Road is through a horizontal curve (716' Radius).
- 4. Commercial Business on north side of S.R. 36 does not have a well-defined access point.
- 5. Stop Controlled Intersection with Fordtown Road was analyzed by TDOT in 2013.

OBSERVATIONS

An onsite field review was held at 1:00 P.M. on June 19, 2014. The following discussions/observations were noted:

- Signing and striping needs to be updated.
- Install left turn Lanes at Fordtown Road.
- Add Raised concrete islands on the north side of the Fordtown Road intersection.
- Install guardrail on S.R. 36 between the intersections of Proffitt Lane/Beulah Church Drive and Brookfield Lane.
- Install Solar flashing beacons on intersection warning signs for Fordtown Road.
- Add guardrail delineation to all existing guardrail.
- A field review of the horizontal alignment along the corridor was performed. A traditional ball-bank indicator was used to analyze each curve. All curves within the limits of the project met the posted speed limit.

The RSAR recommended safety improvements are depicted on the aerial layout sheets included with this report.

The total estimated cost of the improvements listed in the report is \$207,800.00. No right-of-way acquisition is required. A maintenance agreement is not required. A local match is not required. These improvements will be let to contract.

Sullivan County
S.R. 36
L.M. 0.00-L.M. 2.76
PIN: 119984.00

SITE PHOTOS – 06/19/2014



(L.M. 0.25) S.R. 36 looking north.



(L.M. 0.50) S.R. 36 looking north.

Sullivan County
S.R. 36
L.M. 0.00-L.M. 2.76
PIN: 119984.00



(L.M. 0.88) S.R. 36 looking north.



(L.M. 1.25) S.R. 36 looking north.

Sullivan County
S.R. 36
L.M. 0.00-L.M. 2.76
PIN: 119984.00



(L.M. 1.60) S.R. 36 looking north.



(L.M. 1.93) S.R. 36 looking north at Fordtown Road.

Sullivan County
S.R. 36
L.M. 0.00-L.M. 2.76
PIN: 119984.00



(L.M. 2.36) S.R. 36 looking north.



(L.M. 2.60) S.R. 36 looking north at the end of the project.

RSAR NO PLANS COST ESTIMATE				
Route:	S.R. 36 RSAR			
Description:	From Washington County Line			
	To North of Lakeside Lane			
County:	Sullivan			
Length:	2.76 Miles			
Date:	July 31, 2014			
DESCRIPTION	LOCAL	STATE	FEDERAL	TOTAL
Right-of-Way	\$ -	\$ -	\$ -	\$ -
Clearing and Grubbing	\$ -	\$ -	\$ -	\$ -
Earthwork	\$ -	\$ 450	\$ 4,050	\$ 4,500
Railroad Crossing or Separation	\$ -	\$ -	\$ -	\$ -
Drainage	\$ -	\$ -	\$ -	\$ -
Utilities	\$ -	\$ -	\$ -	\$ -
Structures	\$ -	\$ -	\$ -	\$ -
Pavement Removal		\$ 600	\$ 5,200	\$ 5,800
Paving	\$ -	\$ 6,370	\$ 57,330	\$ 63,700
Roadway and Pavement Appurtenances	\$ -	\$ 1,440	\$ 12,960	\$ 14,400
Retaining Walls	\$ -	\$ -	\$ -	\$ -
Topsoil	\$ -	\$ -	\$ -	\$ -
Seeding	\$ -	\$ -	\$ -	\$ -
Sodding	\$ -	\$ -	\$ -	\$ -
Rip-Rap or Slope Protection	\$ -	\$ -	\$ -	\$ -
Fencing	\$ -	\$ -	\$ -	\$ -
Signing ¹			\$ 19,600	\$ 19,600
Pavement Markings ¹			\$ 59,700	\$ 59,700
Lighting ¹			\$ -	\$ -
Signalization ¹			\$ -	\$ -
Guardrail ¹			\$ 20,200	\$ 20,200
Pay Item Quantity Adjustment (15%) ²			\$ -	\$ -
Maintenance of Traffic		\$ -	\$ 10,000	\$ 10,000
Mobilization (5%)		\$ 440	\$ 9,500	\$ 9,900
CONSTRUCTION COST (rounded)		\$ 9,300	\$ 198,500	\$ 207,800
Engineering and Contingency (10%)			\$ -	\$ -
TOTAL CONSTRUCTION COST (rounded)		\$ 9,300	\$ 198,500	\$ 207,800
Preliminary Engineering (5%)		\$ -	\$ -	\$ -
PROJECT COST ³(rounded)	\$ -	\$ 9,300	\$ 198,500	\$ 207,800

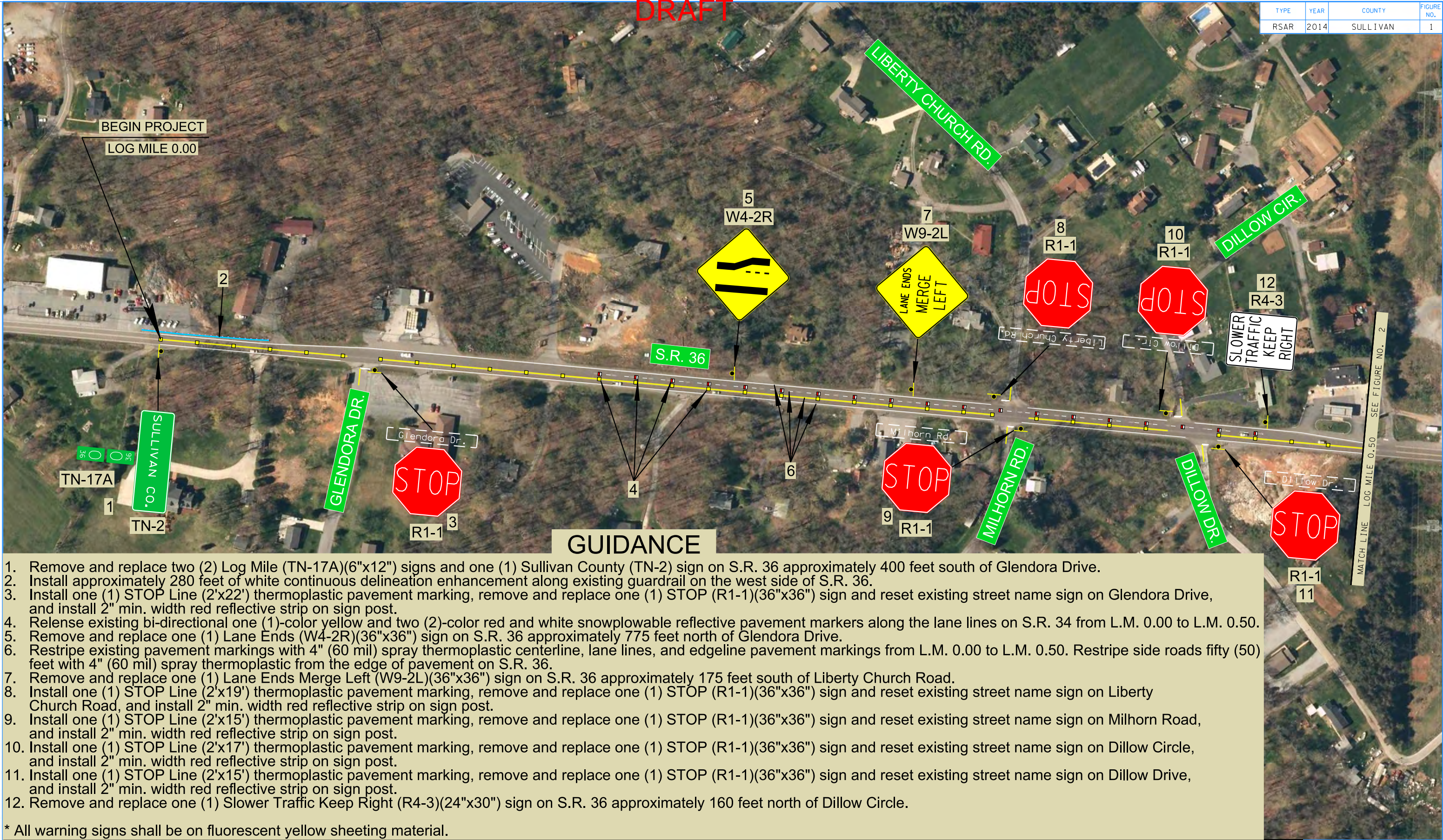
¹ This safety item is 100% eligible and does not require a 10% funding match by the local agency.

² For estimating purposes pay items are adjusted for fluxuation of cost based on quantity.

³ For estimating future project costs, a compounded inflation rate of 7% should be applied from the date of this estimate.

DRAFT

TYPE	YEAR	COUNTY	FIGURE NO.
RSAR	2014	SULLIVAN	1



1. Remove and replace two (2) Log Mile (TN-17A)(6"x12") signs and one (1) Sullivan County (TN-2) sign on S.R. 36 approximately 400 feet south of Glendora Drive.
2. Install approximately 280 feet of white continuous delineation enhancement along existing guardrail on the west side of S.R. 36.
3. Install one (1) STOP Line (2'x22') thermoplastic pavement marking, remove and replace one (1) STOP (R1-1)(36"x36") sign and reset existing street name sign on Glendora Drive, and install 2" min. width red reflective strip on sign post.
4. Relense existing bi-directional one (1)-color yellow and two (2)-color red and white snowplowable reflective pavement markers along the lane lines on S.R. 34 from L.M. 0.00 to L.M. 0.50.
5. Remove and replace one (1) Lane Ends (W4-2R)(36"x36") sign on S.R. 36 approximately 775 feet north of Glendora Drive.
6. Restripe existing pavement markings with 4" (60 mil) spray thermoplastic centerline, lane lines, and edgeline pavement markings from L.M. 0.00 to L.M. 0.50. Restripe side roads fifty (50) feet with 4" (60 mil) spray thermoplastic from the edge of pavement on S.R. 36.
7. Remove and replace one (1) Lane Ends Merge Left (W9-2L)(36"x36") sign on S.R. 36 approximately 175 feet south of Liberty Church Road.
8. Install one (1) STOP Line (2'x19') thermoplastic pavement marking, remove and replace one (1) STOP (R1-1)(36"x36") sign and reset existing street name sign on Liberty Church Road, and install 2" min. width red reflective strip on sign post.
9. Install one (1) STOP Line (2'x15') thermoplastic pavement marking, remove and replace one (1) STOP (R1-1)(36"x36") sign and reset existing street name sign on Milhorn Road, and install 2" min. width red reflective strip on sign post.
10. Install one (1) STOP Line (2'x17') thermoplastic pavement marking, remove and replace one (1) STOP (R1-1)(36"x36") sign and reset existing street name sign on Dillow Circle, and install 2" min. width red reflective strip on sign post.
11. Install one (1) STOP Line (2'x15') thermoplastic pavement marking, remove and replace one (1) STOP (R1-1)(36"x36") sign and reset existing street name sign on Dillow Drive, and install 2" min. width red reflective strip on sign post.
12. Remove and replace one (1) Slower Traffic Keep Right (R4-3)(24"x30") sign on S.R. 36 approximately 160 feet north of Dillow Circle.

* All warning signs shall be on fluorescent yellow sheeting material.

7/22/2014 12:52:19 PM
O:\292552\1\Proposed Figures\SR 36_Figure 1.dgn

ROAD SAFETY AUDIT REVIEW

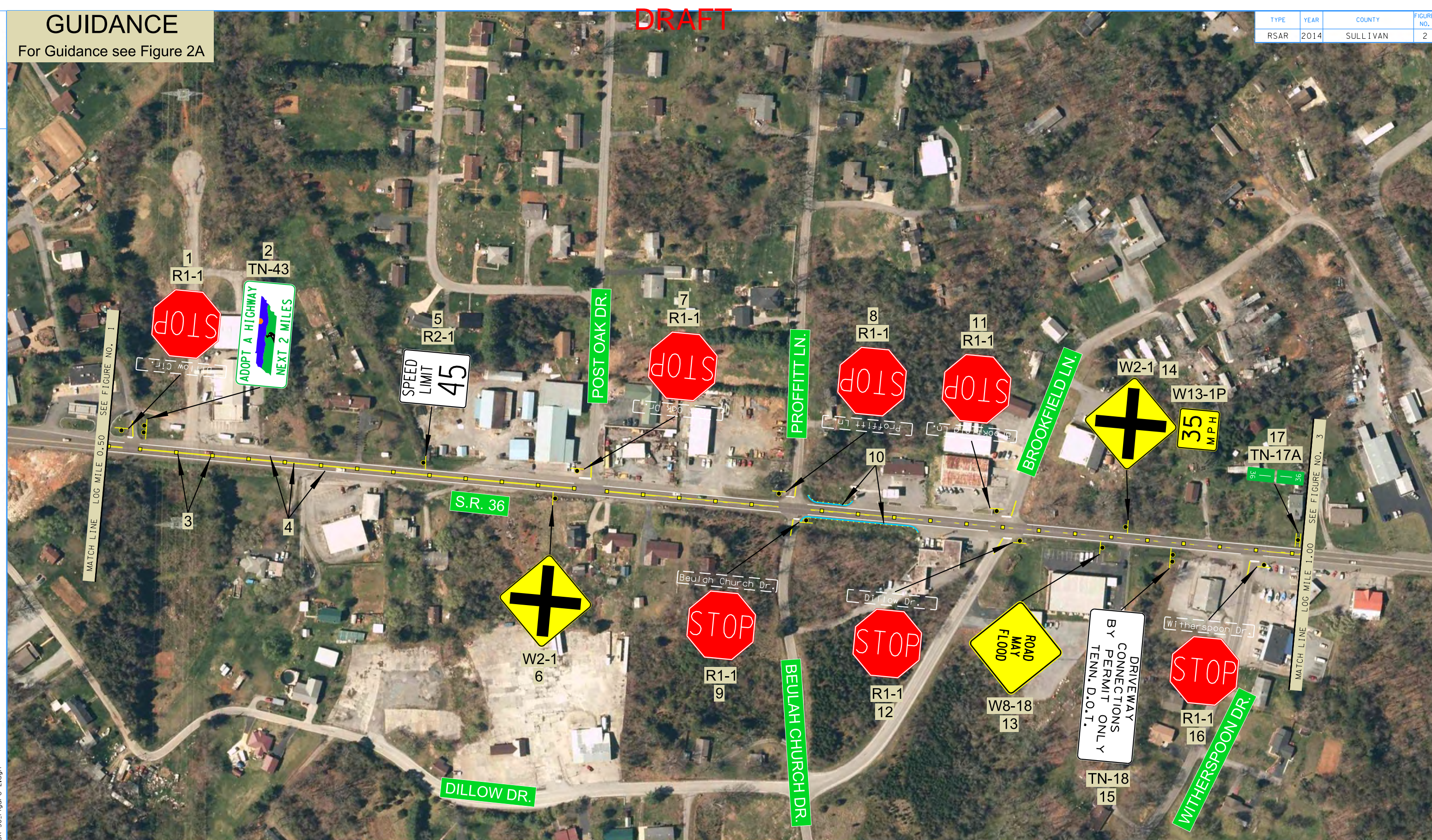
S.R. 36
L.M. 0.00 TO L.M. 2.76
SULLIVAN COUNTY

GUIDANCE

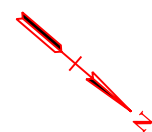
For Guidance see Figure 2A

DRAFT

TYPE	YEAR	COUNTY	FIGURE NO.
RSAR	2014	SULLIVAN	2



7/22/2014 12:52:35 PM
0:2925152\t\Proposed Figures\SR 36_Figure 2.dgn



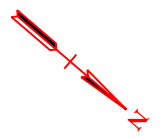
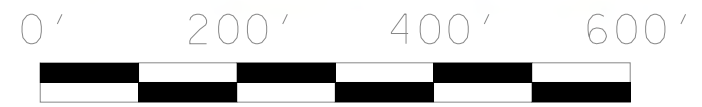
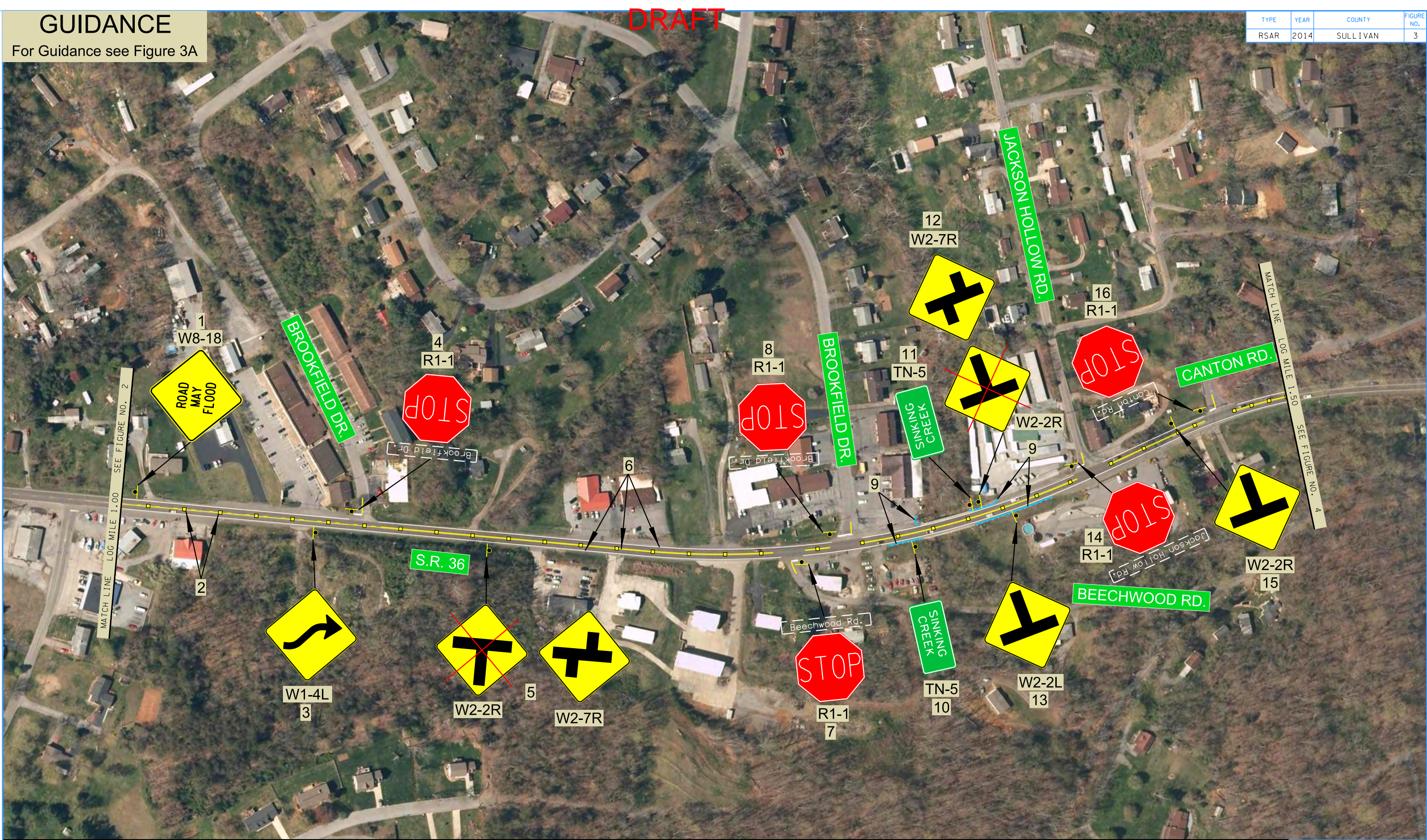
ROAD SAFETY AUDIT REVIEW

S.R. 36
L.M. 0.00 TO L.M. 2.76
SULLIVAN COUNTY

STATE OF TENNESSEE
DEPARTMENT OF TRANSPORTATION
STRATEGIC TRANSPORTATION
INVESTMENTS DIVISION

FIGURE 2
S.R. 36 AND
L.M. 0.50 TO
L.M. 1.00

TENNESSEE D.O.T. STRATEGIC TRANSPORTATION INVESTMENTS DIVISION			DRAFT			TYPE RSAR		YEAR 2014	COUNTY SULLIVAN	FIGURE NO. 2A
FILE NO.			<div>GUIDANCE</div> <div><div><div><div>1.</div><div>Install one (1) STOP Line (2'x13') thermoplastic pavement marking, remove and replace one (1) STOP (R1-1)(36"x36") sign and reset existing street name sign on Dillow Circle, and install 2" min. width red reflective strip on sign post.</div></div><div><div>2.</div><div>Remove and replace one (1) Adopt A Highway (TN-43)(36"x24") sign on S.R. 36 approximately 950 feet south of Post Oak Drive.</div></div><div><div>3.</div><div>Relense existing bi-directional one (1)-color yellow snowplowable reflective pavement markers along the lane lines on S.R. 34 from L.M. 0.50 to L.M. 1.00.</div></div><div><div>4.</div><div>Restripe existing pavement markings with 4" (60 mil) spray thermoplastic centerline and edgeline pavement markings from L.M. 0.50 to L.M. 1.00. Restripe side roads fifty (50) feet with 4" (60 mil) spray thermoplastic from the edge of pavement on S.R. 36.</div></div><div><div>5.</div><div>Remove and replace one (1) Speed Limit 45 MPH (R2-1)(30"x36") sign on S.R. 36 approximatley 400 feet south of Post Oak Drive.</div></div><div><div>6.</div><div>Remove and replace one (1) Intersection Warning (W2-1)(36"x36") sign on S.R. 36 approximatley 45 feet south of Post Oak Drive.</div></div><div><div>7.</div><div>Install one (1) STOP Line (2'x26') thermoplastic pavement marking, remove and replace one (1) STOP (R1-1)(36"x36") sign and reset existing street name sign on Post Oak Drive, and install 2" min. width red reflective strip on sign post.</div></div><div><div>8.</div><div>Install one (1) STOP Line (2'x20') thermoplastic pavement marking, remove and replace one (1) STOP (R1-1)(36"x36") sign and reset existing street name sign on Proffitt Lane, and install 2" min. width red reflective strip on sign post.</div></div><div><div>9.</div><div>Install one (1) STOP Line (2'x14') thermoplastic pavement marking, remove and replace one (1) STOP (R1-1)(36"x36") sign and reset existing street name sign on Beulah Church Drive, and install 2" min. width red reflective strip on sign post.</div></div><div><div>10.</div><div>Install approximately 100 feet of guardrail with two (2) Type In Line end terminals on the west side of S.R. 36 and install approximately 273 feet of guardrail with two (2) Type In Line end terminals on the east side of S.R. 36. Install 373 feet of white continuous delineation enhancement along the proposed guardrail.</div></div><div><div>11.</div><div>Install one (1) STOP Line (2'x21') thermoplastic pavement marking, remove and replace one (1) STOP (R1-1)(36"x36") sign and reset existing street name sign on Brookfield Lane, and install 2" min. width red reflective strip on sign post.</div></div><div><div>12.</div><div>Install one (1) STOP Line (2'x19') thermoplastic pavement marking, remove and replace one (1) STOP (R1-1)(36"x36") sign and reset existing street name sign on Dillow Drive, and install 2" min. width red reflective strip on sign post.</div></div><div><div>13.</div><div>Remove and replace one (1) Road May Flood (W8-18)(36"x36") sign on S.R. 36 approximately 171 feet north of Dillow Drive.</div></div><div><div>14.</div><div>Remove and replace one (1) Intersection Warning (W2-1)(36"x36") sign and one (1) Advisory Speed (W13-1P)(18"x18") plaque on S.R. 36 approximately 222 feet north of Brookfield Lane.</div></div><div><div>15.</div><div>Remove and replace one (1) Driveway Connections By Permit Only Tenn. D.O.T. (TN-18) sign on S.R. 36 approximatley 327 feet north of Dillow Drive.</div></div><div><div>16.</div><div>Install one (1) STOP Line (2'x20') thermoplastic pavement marking, remove and replace one (1) STOP (R1-1)(36"x36") sign and reset existing street name sign on Witherspoon Drive, and install 2" min. width red reflective strip on sign post.</div></div><div><div>17.</div><div>Remove and replace two (2) Log Mile (TN-17A)(6"x12") signs on S.R. 36 approximately 73 feet north of Witherspoon Drive.</div></div></div><div><div>* All warning signs shall be on fluorescent yellow sheeting material.</div></div></div>							
7/22/2014 12:52:50 PM 0A\2925f52\1\Proposed Figures\SR 36_Figure 2A.dgn			ROAD SAFETY AUDIT REVIEW						STATE OF TENNESSEE DEPARTMENT OF TRANSPORTATION STRATEGIC TRANSPORTATION INVESTMENTS DIVISION	
			S.R. 36 L.M. 0.00 TO L.M. 2.76 SULLIVAN COUNTY						FIGURE 2A S.R. 36 AND L.M. 0.50 TO L.M. 1.00	



ROAD SAFETY AUDIT REVIEW

S.R. 36
L.M. 0.00 TO L.M. 2.76
SULLIVAN COUNTY

TENNESSEE D.O.T.
STRATEGIC TRANSPORTATION
INVESTMENTS DIVISION

FILE NO.

DRAFT

TYPE	YEAR	COUNTY	FIGURE NO.
RSAR	2014	SULLIVAN	3A

GUIDANCE

1. Remove and replace one (1) Road May Flood (W8-18)(36"x36") sign on S.R. 36 approximately 470 feet south of Brookfield Drive.

2. Relense existing bi-directional one (1)-color yellow snowplowable reflective pavement markers along the lane lines on S.R. 34 from L.M. 1.00 to L.M. 1.50.

3. Remove and replace one (1) Reverse Curve Warning (W1-4L)(36"x36") sign on S.R. 36 approximately 77 feet south of Brookfield Drive.

4. Install one (1) STOP Line (2'x19') thermoplastic pavement marking, remove and replace one (1) STOP (R1-1)(36"x36") sign and reset existing street name sign on Brookfield Drive, and install 2" min. width red reflective strip on sign post.

5. Remove one (1) Intersection Warning (W2-2R)(36"x36") sign and install one (1) Intersection Warning (W2-7R)(36"x36") sign on S.R. 36 approximately 245 feet north of Brookfield Drive.

6. Restripe existing pavement markings with 4" (60 mil) spray thermoplastic centerline and edgeline pavement markings from L.M. 1.00 to L.M. 1.50. Restripe side roads fifty (50) feet with 4" (60 mil) spray thermoplastic from the edge of pavement on S.R. 36.

7. Install one (1) STOP Line (2'x16') thermoplastic pavement marking, remove and replace one (1) STOP (R1-1)(36"x36") sign and reset existing street name sign on Beechwood Road, and install 2" min. width red reflective strip on sign post.

8. Install one (1) STOP Line (2'x31') thermoplastic pavement marking, remove and replace one (1) STOP (R1-1)(36"x36") sign and reset existing street name sign on Brookfield Drive, and install 2" min. width red reflective strip on sign post.

9. Install approximately 350 feet of white continuous delineation enhancement along existing guardrail on both sides of S.R. 36.

10. Remove and replace one (1) Sinking Creek (TN-5) sign on S.R. 36 approximately 105 feet north of Brookfield Drive.

11. Remove and replace one (1) Sinking Creek (TN-5) sign on S.R. 36 approximately 252 feet north of Brookfield Drive.

12. Remove one (1) Intersection Warning (W2-2R)(36"x36") sign and install one (1) Intersection Warning (W2-7R)(36"x36") sign on S.R. 36 approximately 273 feet north of Brookfield Drive.

13. Remove and replace one (1) Intersection Warning (W2-2L)(36"x36") sign on S.R. 36 approximately 332 feet north of Brookfield Drive.

14. Install one (1) STOP Line (2'x18') thermoplastic pavement marking, remove and replace one (1) STOP (R1-1)(36"x36") sign and reset existing street name sign on Jackson Hollow Road, and install 2" min. width red reflective strip on sign post.

15. Remove and replace one (1) Intersection Warning (W2-2R)(36"x36") sign on S.R. 36 approximately 175 feet north of Jackson Hollow Road.

16. Install one (1) STOP Line (2'x14') thermoplastic pavement marking, remove and replace one (1) STOP (R1-1)(36"x36") sign and reset existing street name sign on Canton Road, and install 2" min. width red reflective strip on sign post.

* All warning signs shall be on fluorescent yellow sheeting material.

ROAD SAFETY AUDIT REVIEW

S.R. 36

L.M. 0.00 TO L.M. 2.76

SULLIVAN COUNTY

STATE OF TENNESSEE
DEPARTMENT OF TRANSPORTATION
STRATEGIC TRANSPORTATION
INVESTMENTS DIVISION

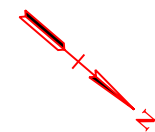
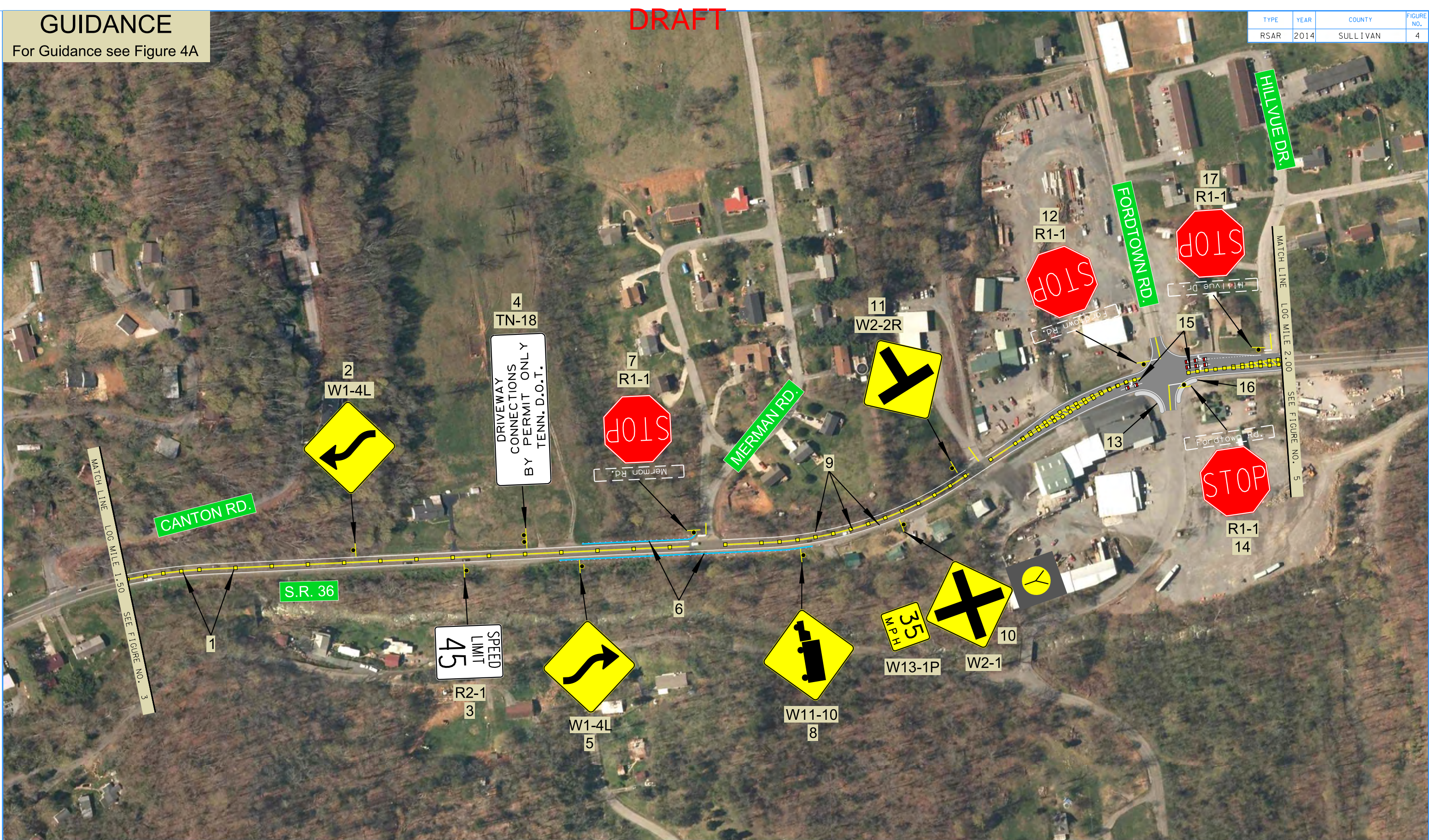
FIGURE 3A

S.R. 36 AND

L.M. 1.00 TO

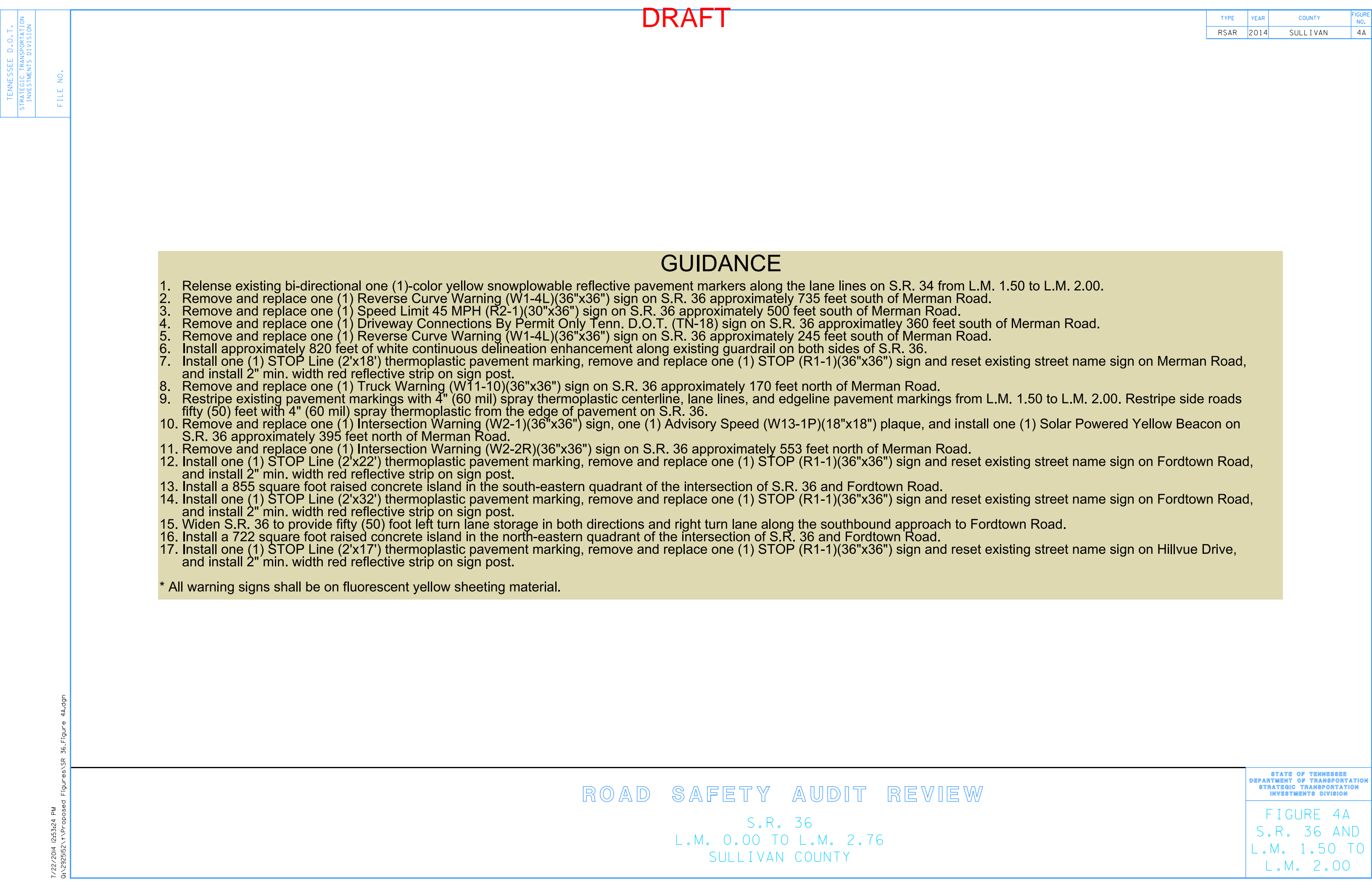
L.M. 1.50

7/22/2014 12:53:07 PM
0A\2925f52\1\Proposed Figures\SR 36_Figure 3A.dgn



ROAD SAFETY AUDIT REVIEW

S.R. 36
L.M. 0.00 TO L.M. 2.76
SULLIVAN COUNTY

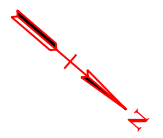
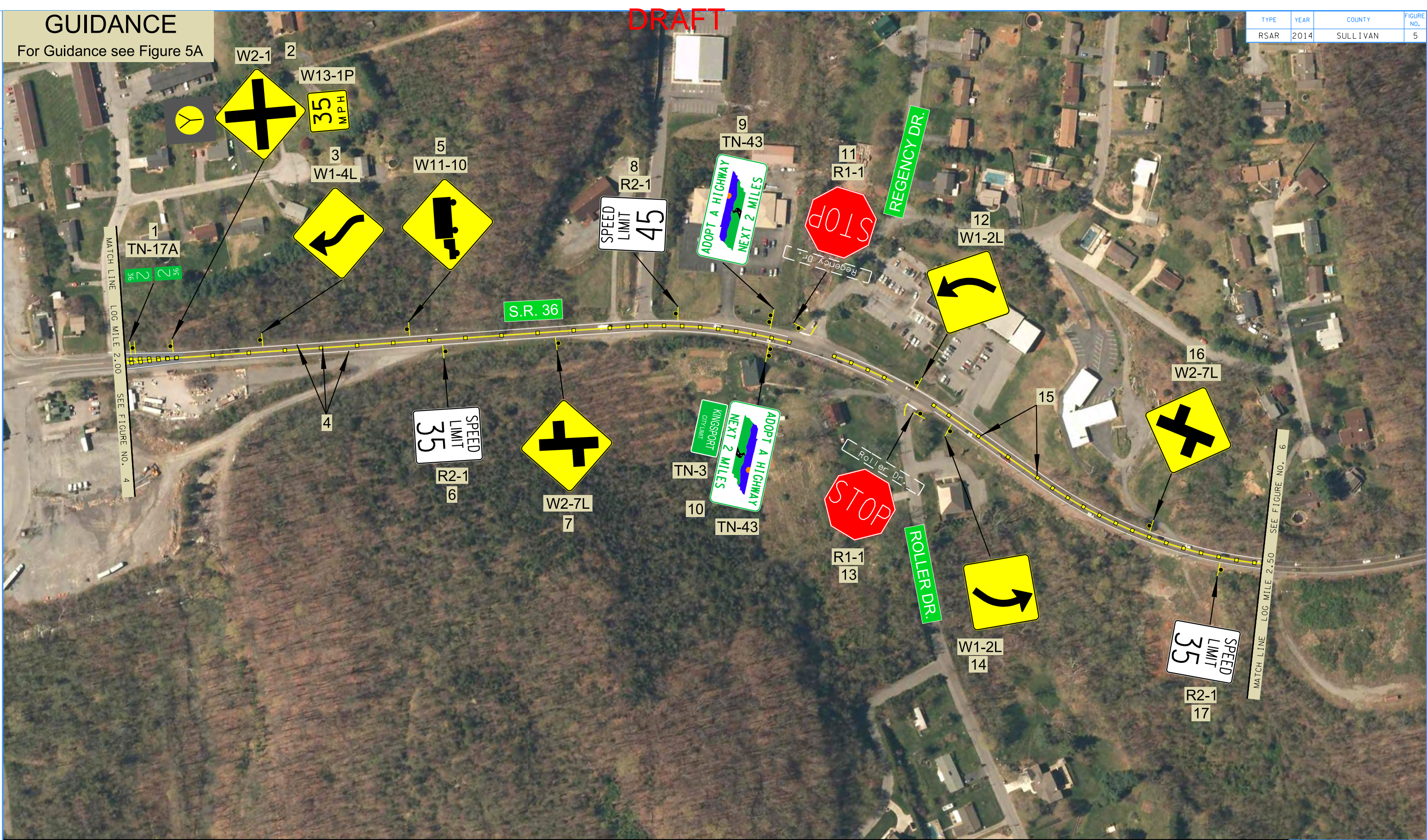


GUIDANCE

For Guidance see Figure 5A

DRAFT

TYPE	YEAR	COUNTY	FIGURE NO.
RSAR	2014	SULLIVAN	5



ROAD SAFETY AUDIT REVIEW

S.R. 36

L.M. 0.00 TO L.M. 2.76

SULLIVAN COUNTY

STATE OF TENNESSEE
DEPARTMENT OF TRANSPORTATION
STRATEGIC TRANSPORTATION
INVESTMENTS DIVISION

FIGURE 5
S.R. 36 AND
L.M. 2.00 TO
L.M. 2.50

* All warning signs shall be on fluorescent yellow sheeting material.

1. Restripe existing pavement markings with 4" (60 mil) spray thermoplastic centerline, channelization, and edgeline pavement markings from L.M. 2.50 to L.M. 2.76. Restripe side roads fifty (50) feet with 4" (60 mil) spray thermoplastic from the edge of pavement on S.R. 36.
2. Remove and replace one (1) School Bus Stop Ahead (S3-1)(36"x36") sign on S.R. 36 approximately 635 feet south of Lakeside Lane.
3. Relense existing bi-directional one (1)-color yellow snowplowable reflective pavement markers along the lane lines on S.R. 34 from L.M. 2.50 to L.M. 2.76.
4. Remove and replace one (1) Curve Warning (W1-2R)(36"x36") sign on S.R. 36 approximately 414 feet south of Lakeside Lane.
5. Remove and replace one (1) Speed Limit 35 MPH (R2-1)(30"x36") sign on S.R. 36 approximately 176 feet south of Lakside Lane.
6. Remove and replace one (1) Divided Highway (W6-1)(36"x36") sign on S.R. 36 approximately 176 feet south of Lakeside Lane.
7. Remove and replace one (1) Two Way Traffic (W6-3)(36"x36") sign on S.R. 36 across from Laeside Lane.
8. Install one (1) STOP Line (2'x20') thermoplastic pavement marking, remove and replace one (1) STOP (R1-1)(36"x36") sign and reset existing street name sign on Lakeside Lane, and install 2" min. width red reflective strip on sign post.
9. Remove and replace one (1) Colonial Heights Unincorporated (TN-4) sign on S.R. 36 approximately 25 feet north of Lakeside Lane.
10. Remove and replace one (1) Interstate Route (M1-1)(24"x24") sign and one (1) Junction (M2-1)(21"x15") sign on S.R. 36 approximately 142 feet north of Lakeside Lane.

* All warning signs shall be on fluorescent yellow sheeting material.
* All school bus warning signs shall be on fluorescent yellow-green sheeting material.



ROAD SAFETY AUDIT REVIEW

S.R. 36
L.M. 0.00 TO L.M. 2.76
SULLIVAN COUNTY

