

Lightning Round

Capital Projects Review

Economic Development Review

Library Update

Bays Mountain Update

the city of kingsport



City of Kingsport / Sullivan County Justice Center 2.0

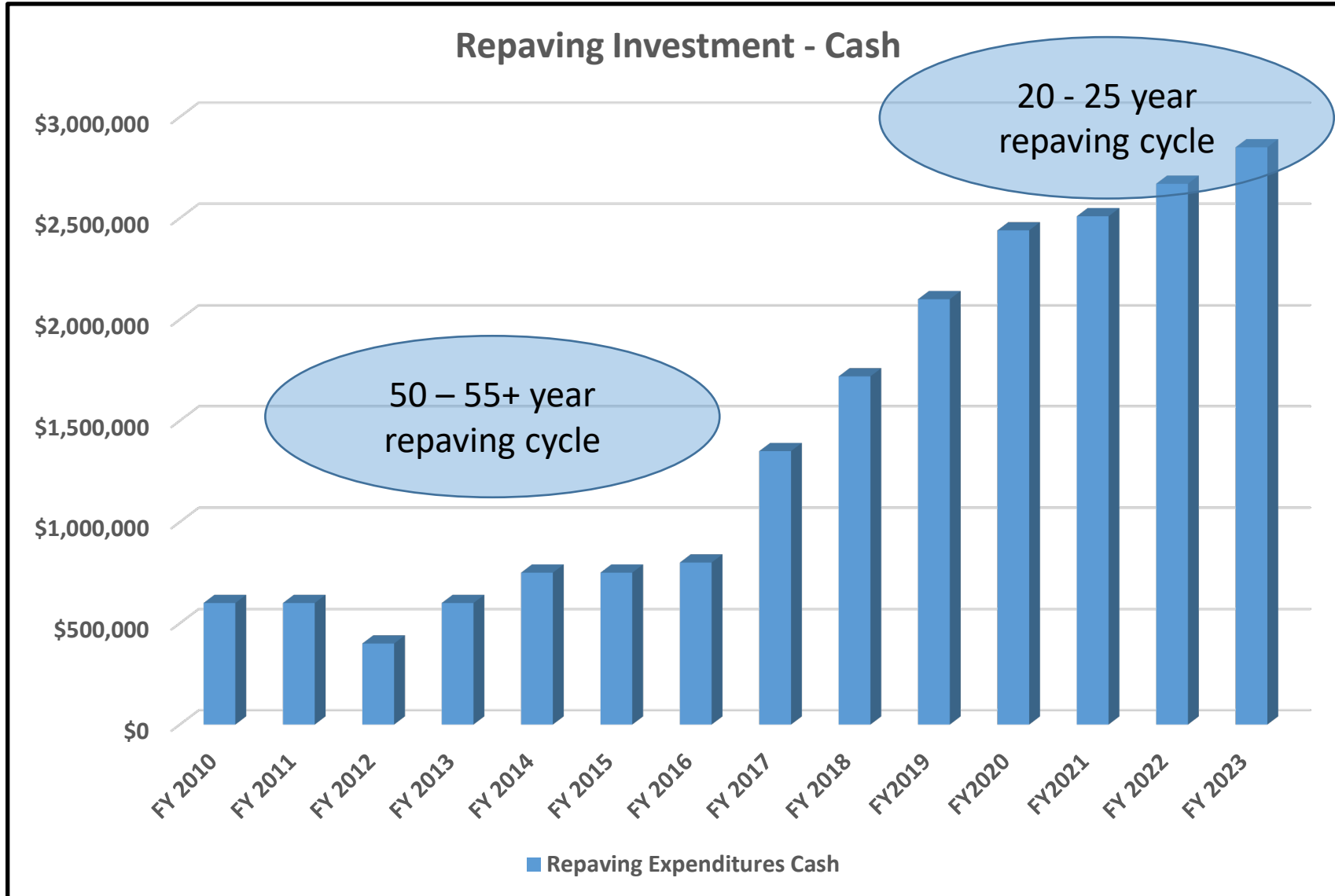


BRICK EXTERIOR- MATCHING EXISTING CONSTRUCTION AS CLOSELY AS POSSIBLE
ROOF LINE IS AT CONSISTENT LEVEL WITH EXISTING JUSTICE CENTER

Main Street



Pave Kingsport – Program Overview



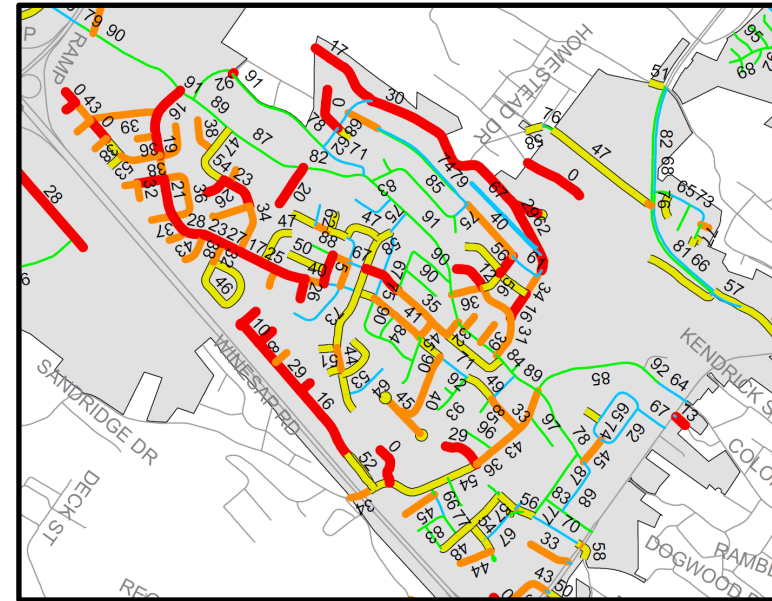
Pave Kingsport – Program Overview



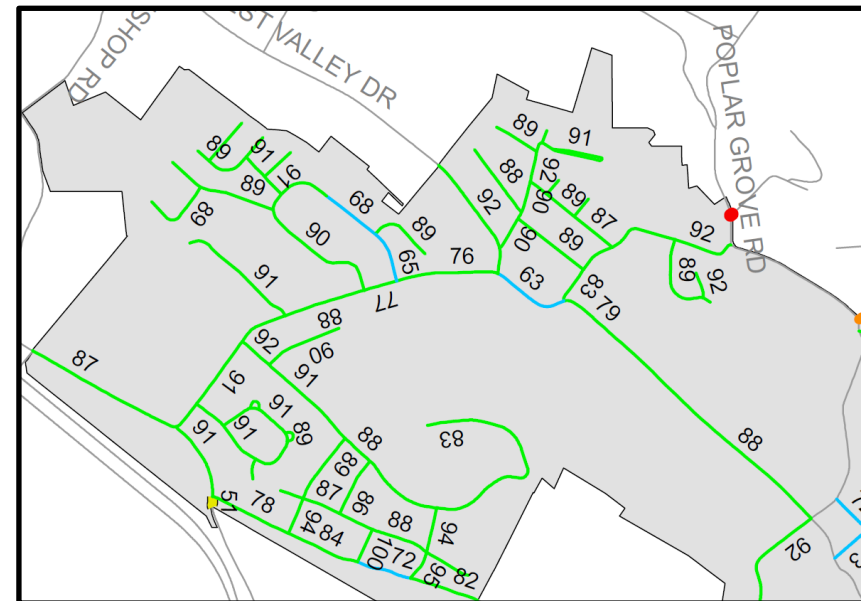
- **Program Goal**

- Manage a Data Driven Resurfacing Effort that maintains streets at or above PCI 70 over a 20 year period.

1. Transparent Assessment
 - LIDAR Assessment every 5 years
2. Transparent Paving Plan
 - www.pavekingsport.com



2016 Data



2016 Data

• Program Outcomes

- Manage a Data Driven Resurfacing Effort that maintains streets at or above PCI 70 over a 20 year period.

1. Transparent Assessment

- 2016 - City Wide Average PCI, 60.65
- 2021 – City Wide Average PCI, 67.88

2. Transparent Paving Plan

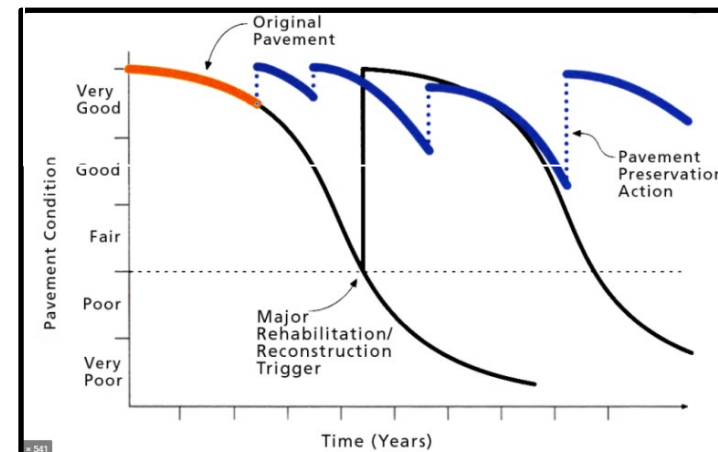
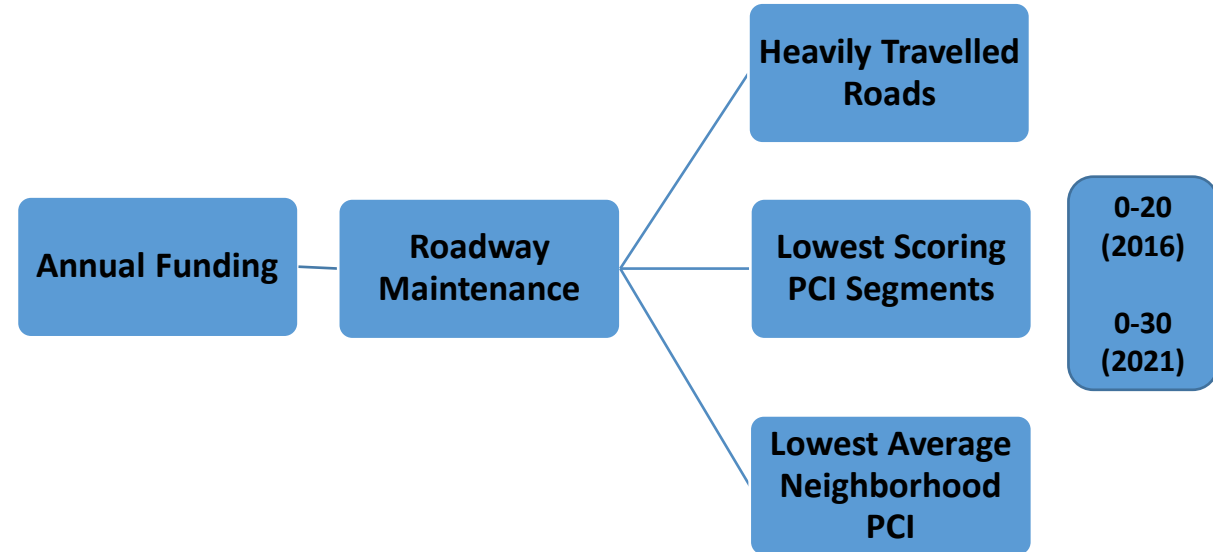
Pavement Condition Index (PCI) Range	Percent of Network 2016	Percent of Network 2021	Percent Change from 2016 to 2021
86-100	21.44%	25.19%	3.75%
71-85	17.93%	25.30%	7.37%
56-70	18.55%	21.16%	2.61%
41-55	20.46%	15.13%	-5.33%
26-40	15.11%	10.64%	-4.47%
11-25	6.02%	2.55%	-3.47%
0-10	0.49%	0.03%	-0.46%
Total	100.00%	100.00%	0.00%

Growth is Desired

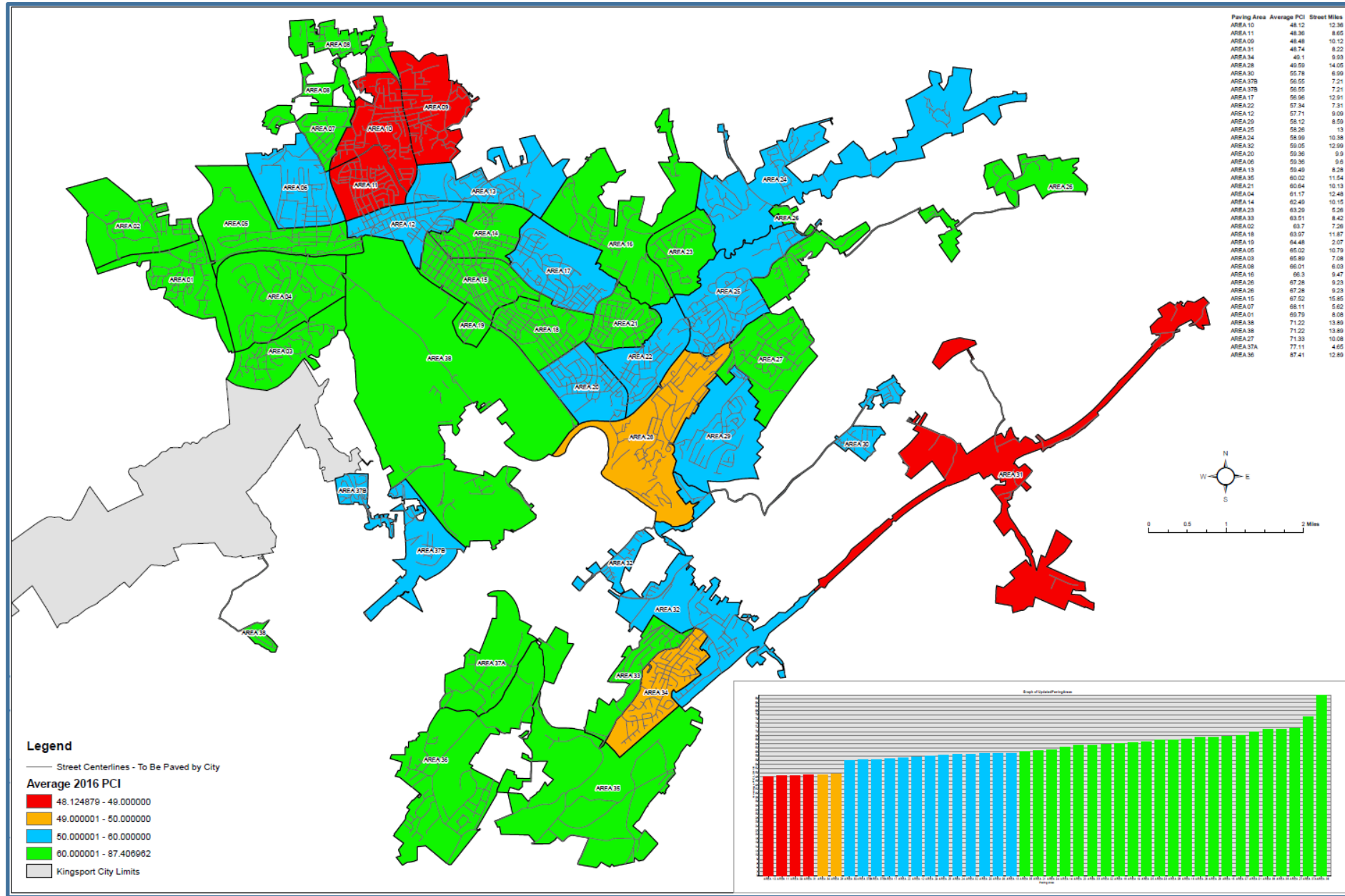
Reduction is Desired

- **Transparent Paving Plan**

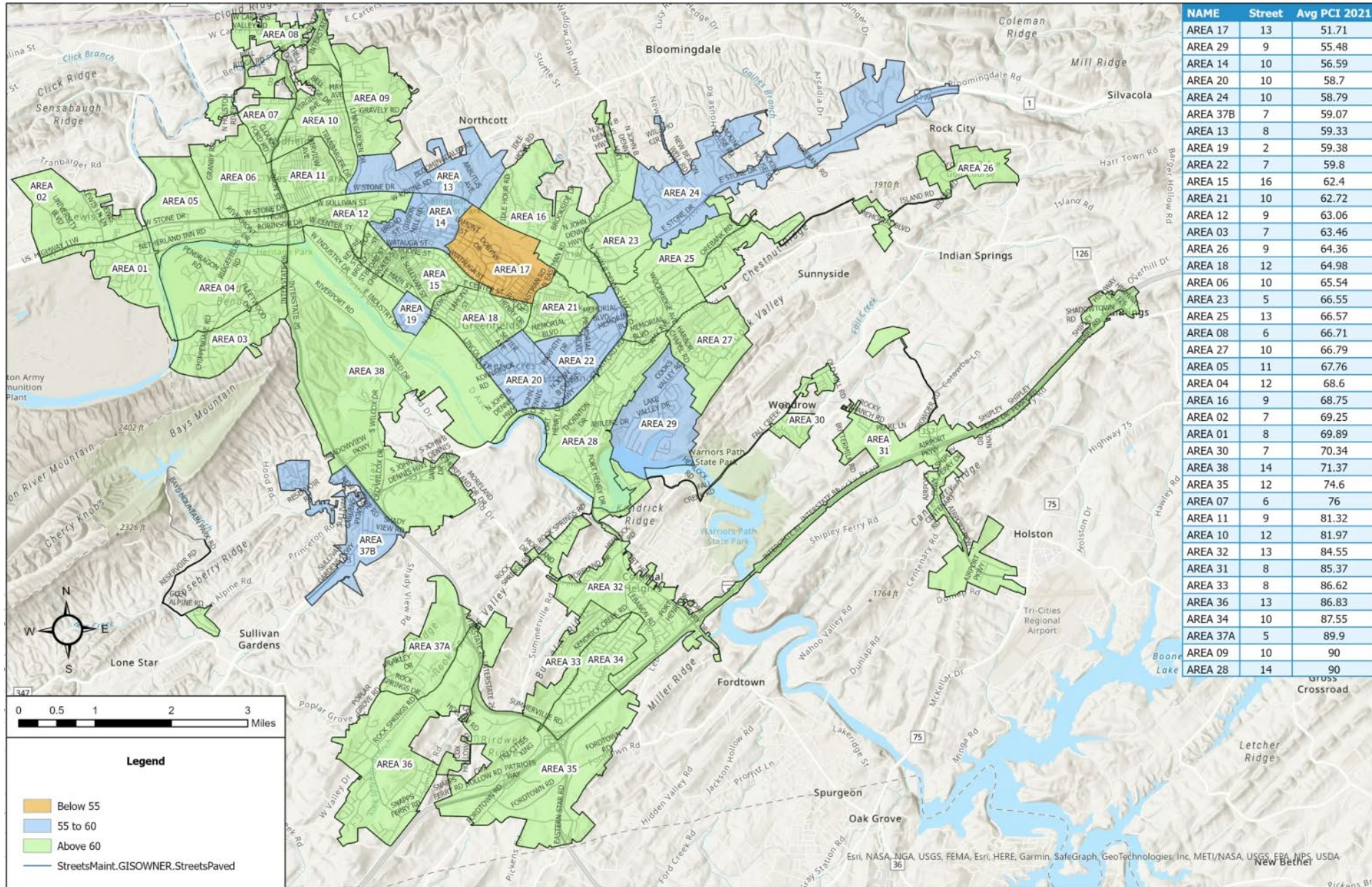
- Data Driven
 - *Objective vs. Subjective*
- Blended Approach
 - *Neighborhoods*
 - *Lowest Scoring PCI Street Segments*
 - *Main Roads*
- Maintenance Toolbelt
 - *Repave*
 - *Renew*
 - *Protect*
- Kingsport's Program
 - *Scope is to Prolong Resurfacing*
 - *Base Repairs / Utilities*
 - *Asphalt Overlaid Concrete*



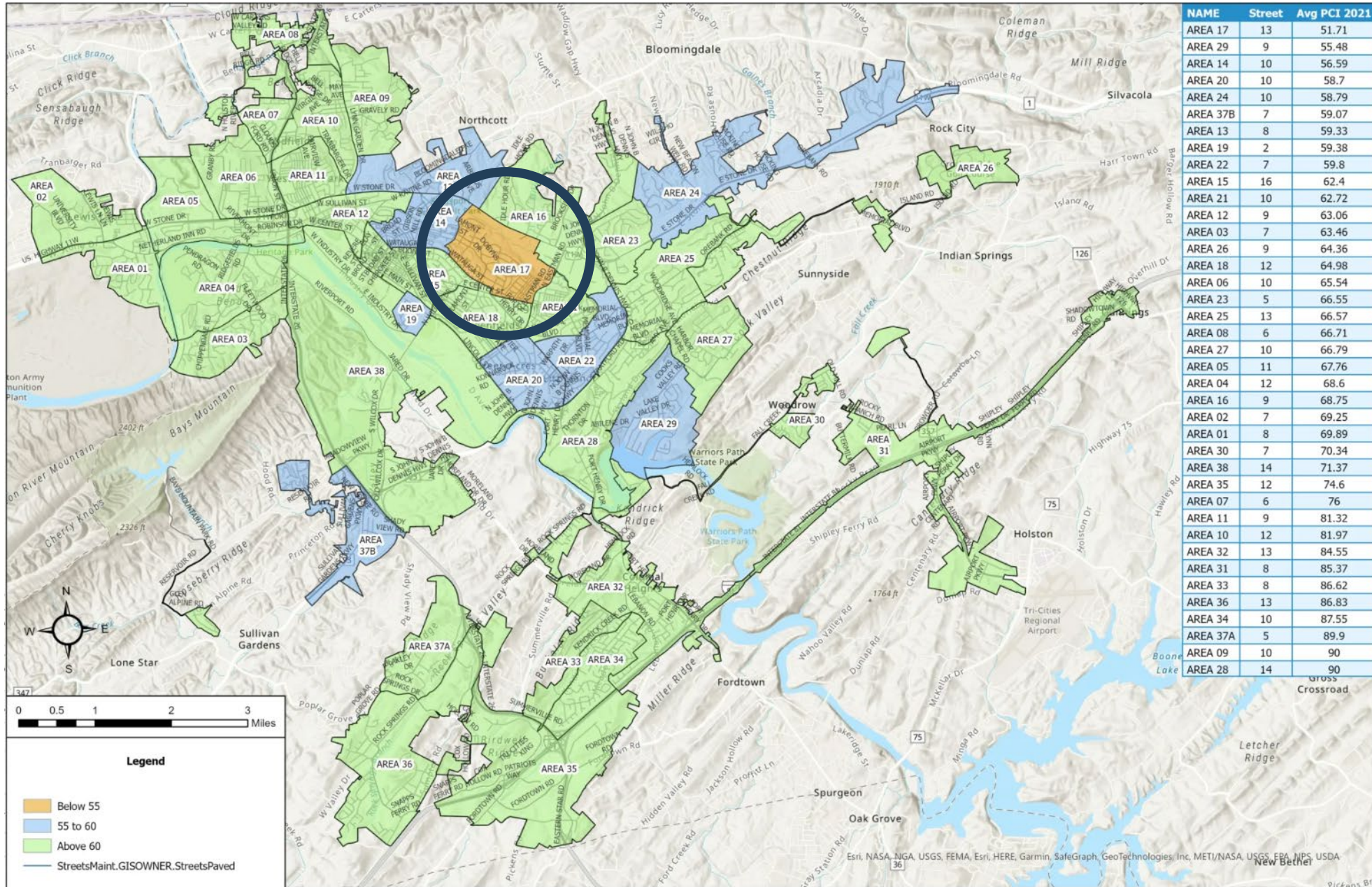
2016 Pavement Condition Map



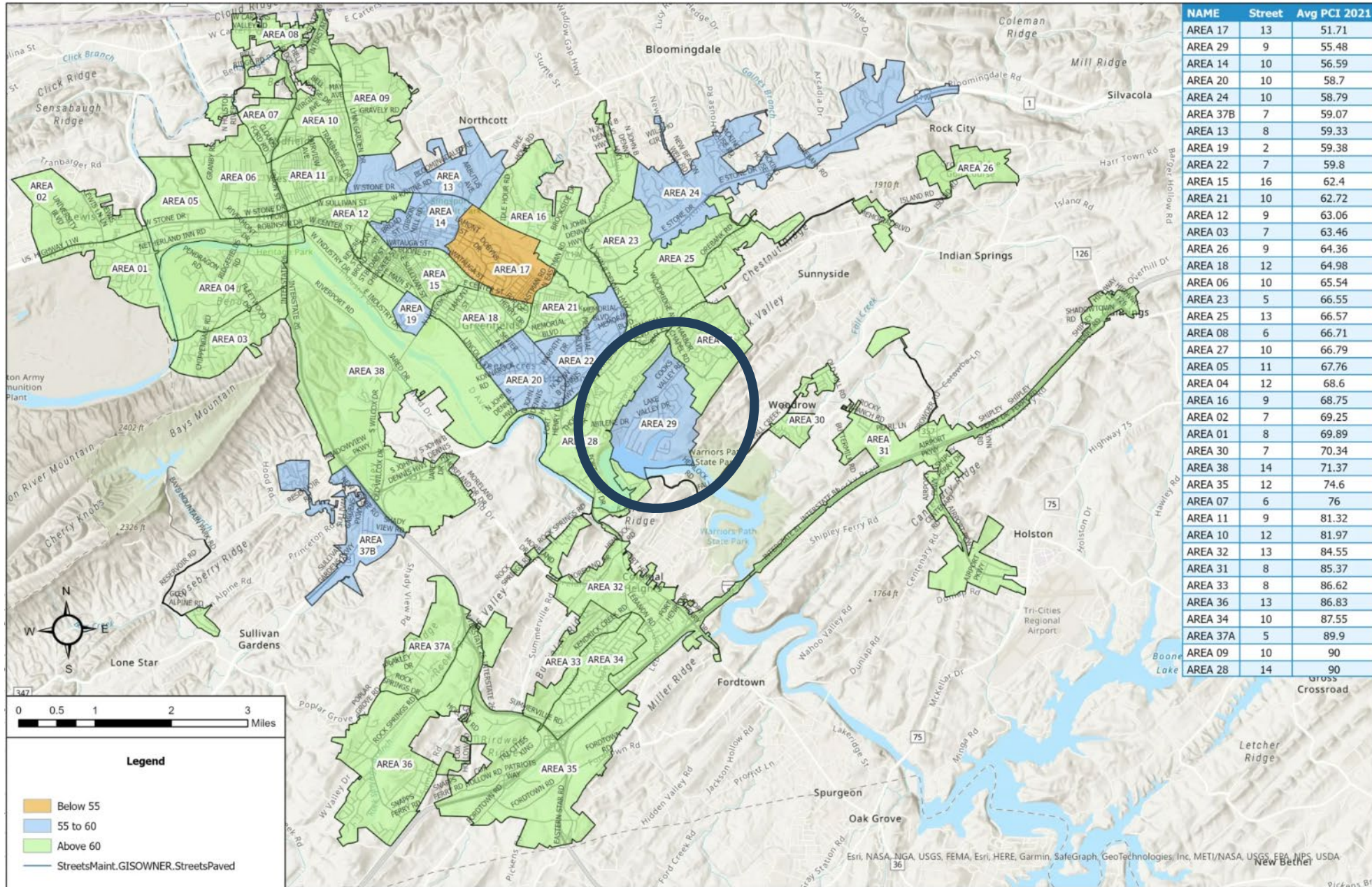
2024 Pavement Condition Map



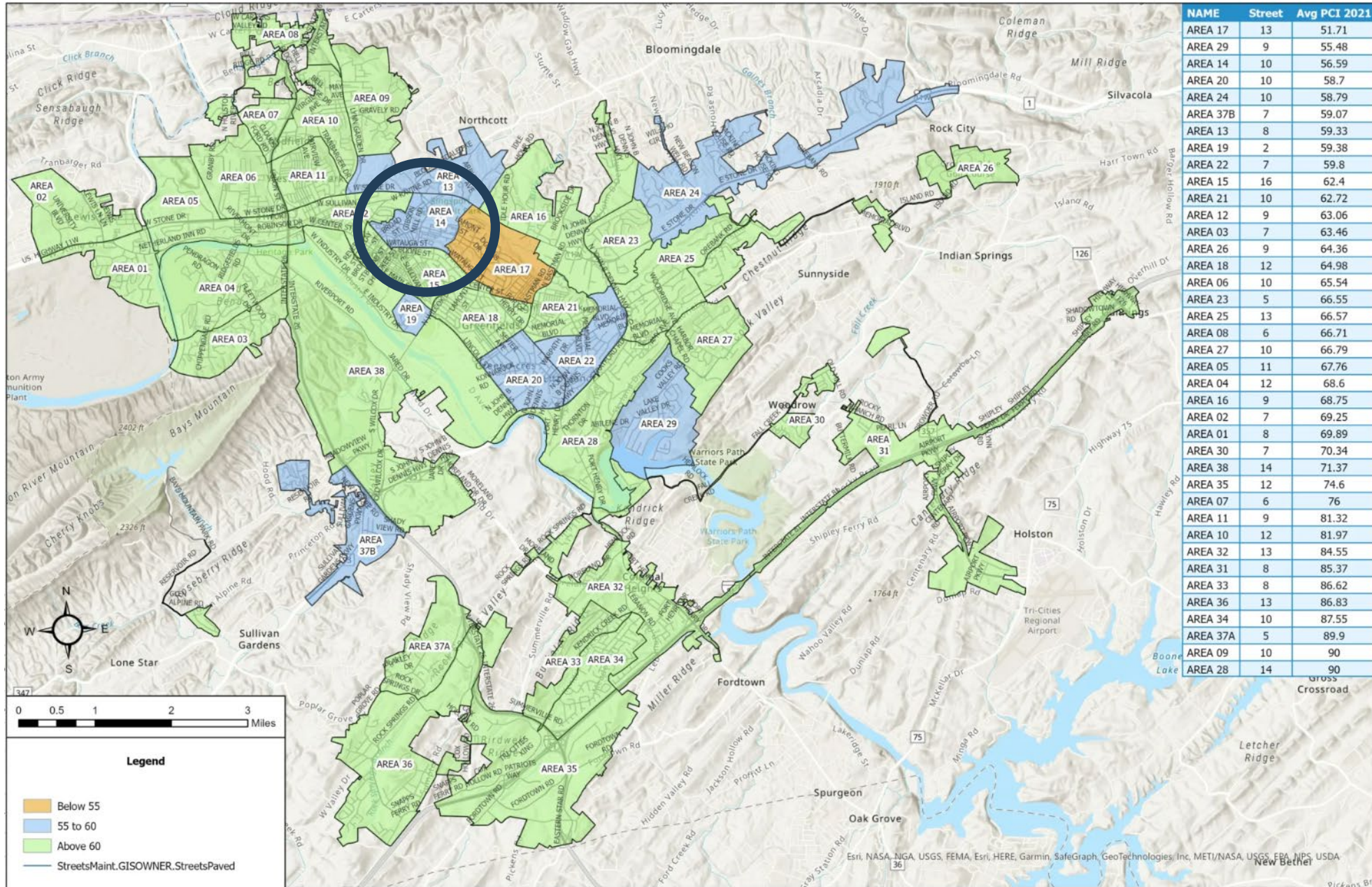
2024 Pavement Condition Map



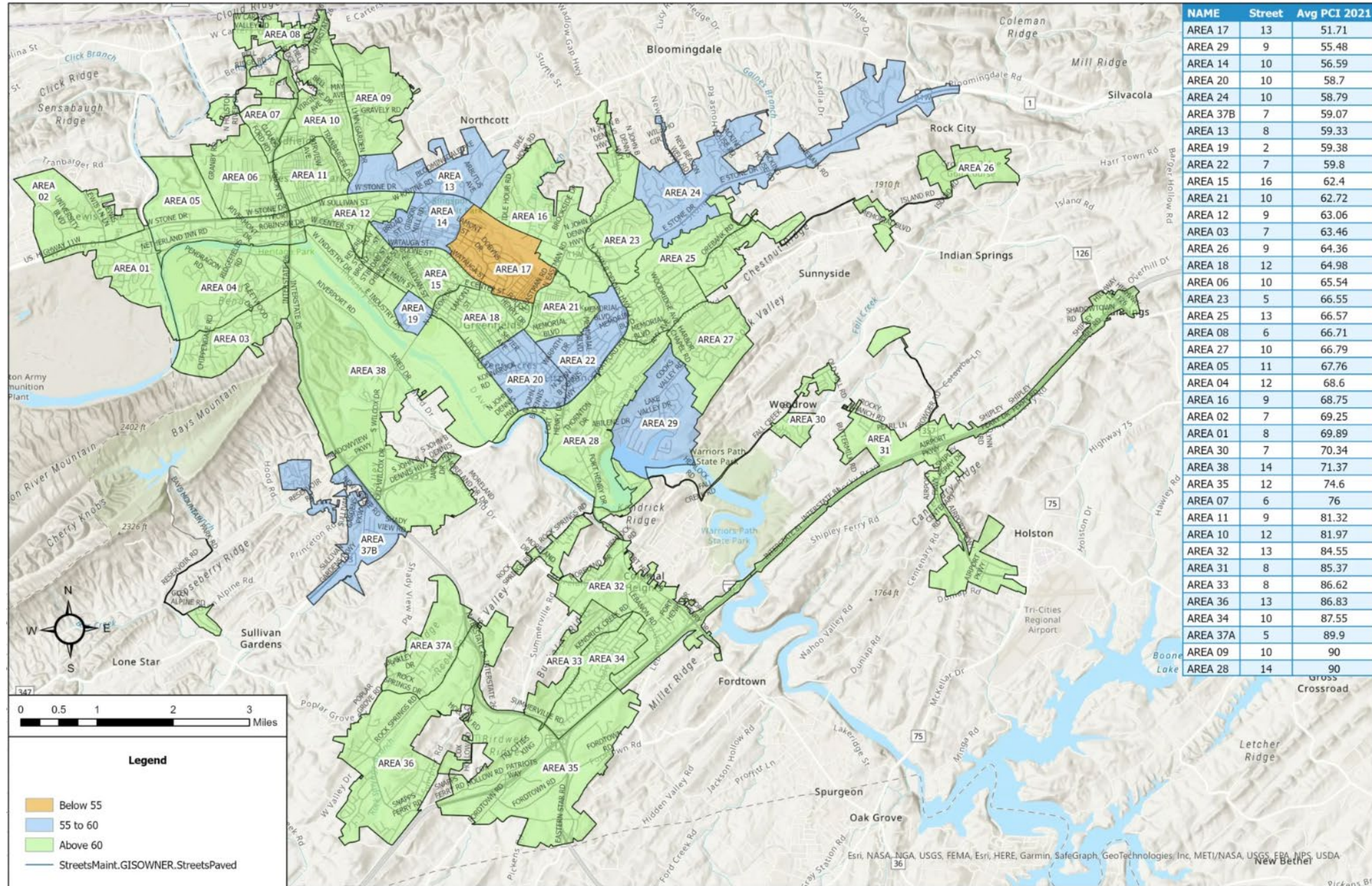
2024 Pavement Condition Map



2024 Pavement Condition Map



2024 Pavement Condition Map



Economic Development

Steven Bower

Ongoing Projects

- Fort Henry Mall
- Kingsport Pavilion
- Brickyard
- Cement Hill
- HAAP Industrial Site



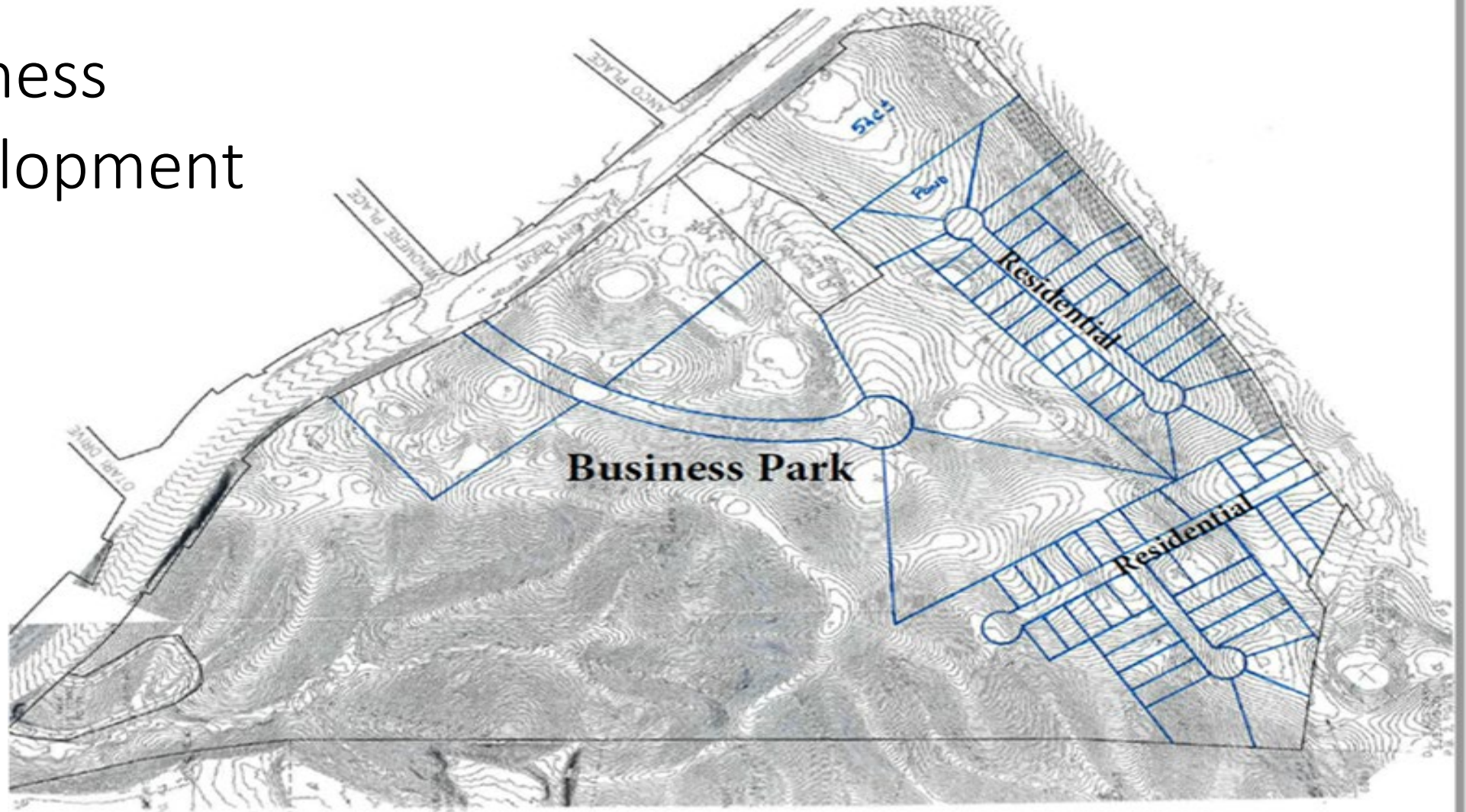
KEDB Property Update

- Dobyys-Taylor Warehouse
- New Street Parking Lot
- Airport Parkway
- Improvement Building



KEDB Property Update

New Business
Park Development



Library Update

Michael Borders



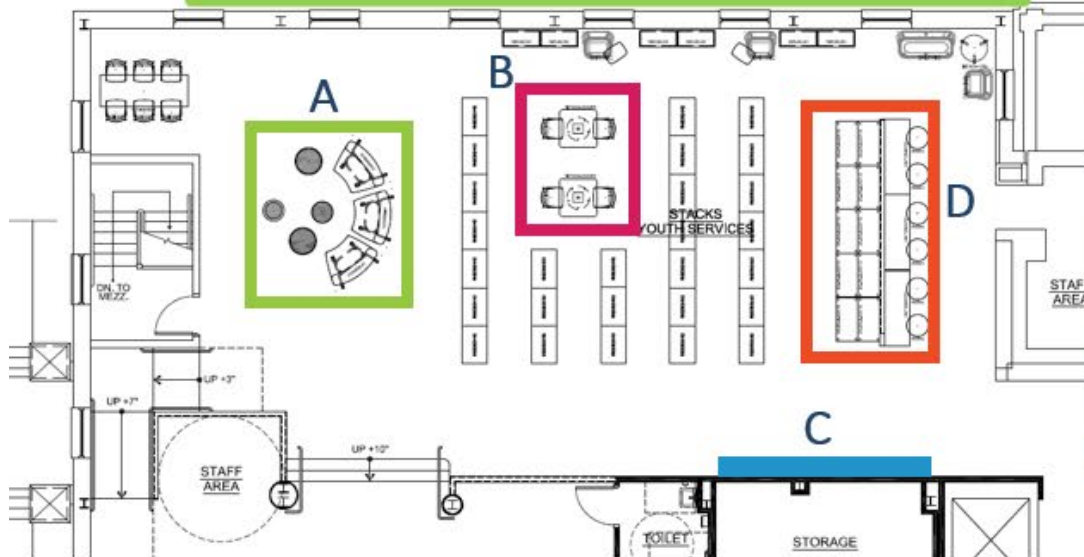
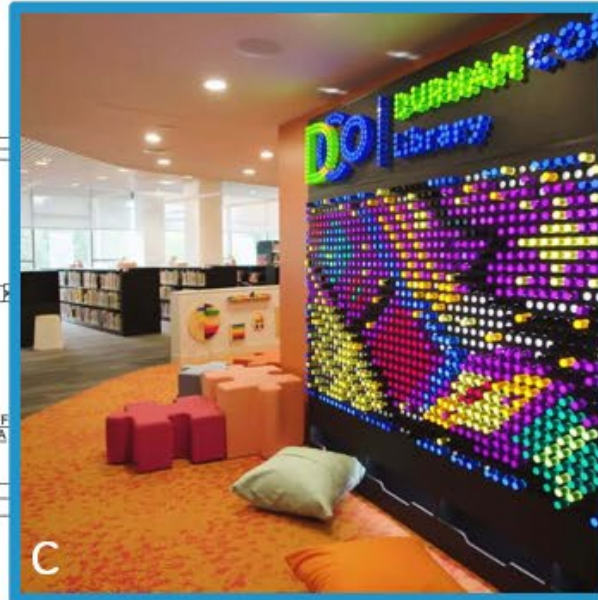
Key Themes Study/Community Survey:

- Need larger children's area
- Dedicated children's programming space
- Designated & expanded teen area
- New elevator
- Lack of study rooms
- Dedicated local history & genealogy
- Updated facility

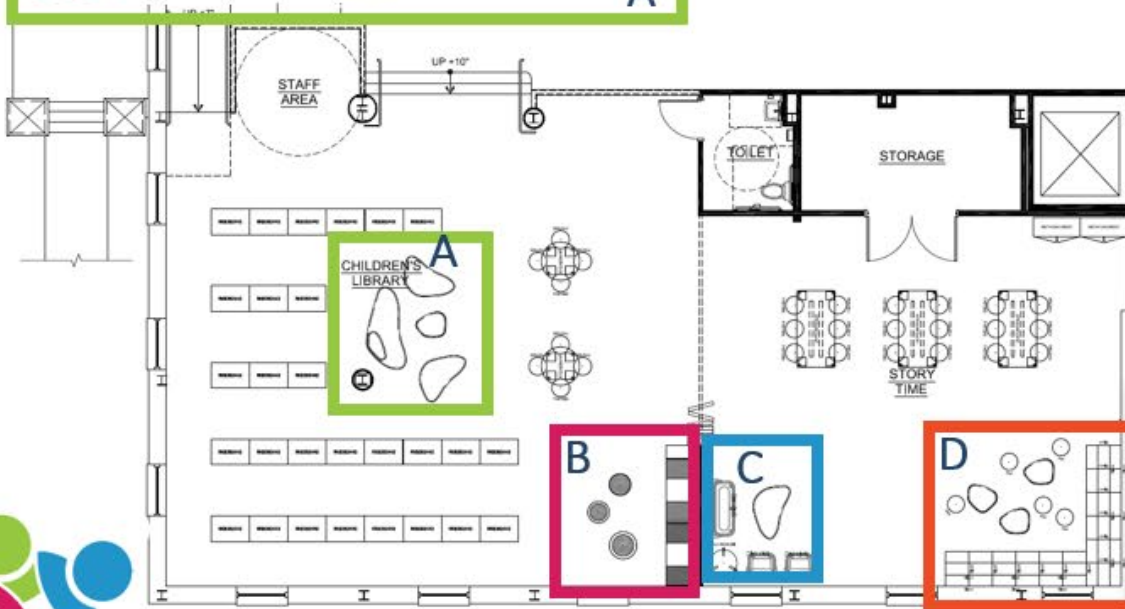
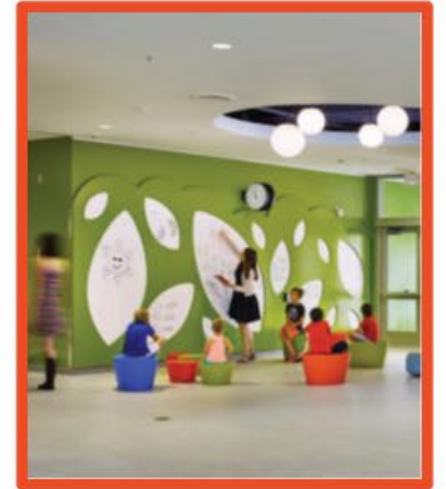
What we're accomplishing:

- Doubling children's area
- Dedicated children's programming space
- New elevator
- 4 additional study rooms
- Dedicated local history & genealogy
- Dedicated & expanded Teen & makerspace
- Updated facility

Youth Services Area



Children's Area





Projected Timeline:

- Q1 2024 final design/cost estimation
- Q2 2024 biddable documents complete/bid/bid moving
- Q3 2024 contract execution
- Q3/4 2024 Move to mall
- 14-18 month construction (Q4 2024 – Q2/3 2026)
- Furniture Install/move back Q3/4 2026
- Opening Q4 2026/Q1 2027

Bays Mountain Park Update

Michael Borders



Project Projected Timeline:

- Nature Center Phase 1: Open May 23rd
- FoxDen Playground: Under design, Q3 2025
- Observation Tower: Construction Documents, Q4 2024
- Otter Habitat: LPRF Q1/2 2026
- Nature Center Phase 2: LPRF Const. mid 2026/final mid 2027
- Park Improvement Plan: finalized March/adoption April



LPRF - What will this grant accomplish?

- Leverages \$2.8m for an additional \$2.8m in state dollars
- New Entry Way for Bays Mountain Park
- New Event Terrace Area
- Nature Center Interior Phase 2 Renovation
 - Custom ADA accessible Kids Cave
- New Otter Habitat
- Expand Scott Adams Skatepark Parking and skills course
- Addition of mountain biking trails adjacent to Cement Hill

