



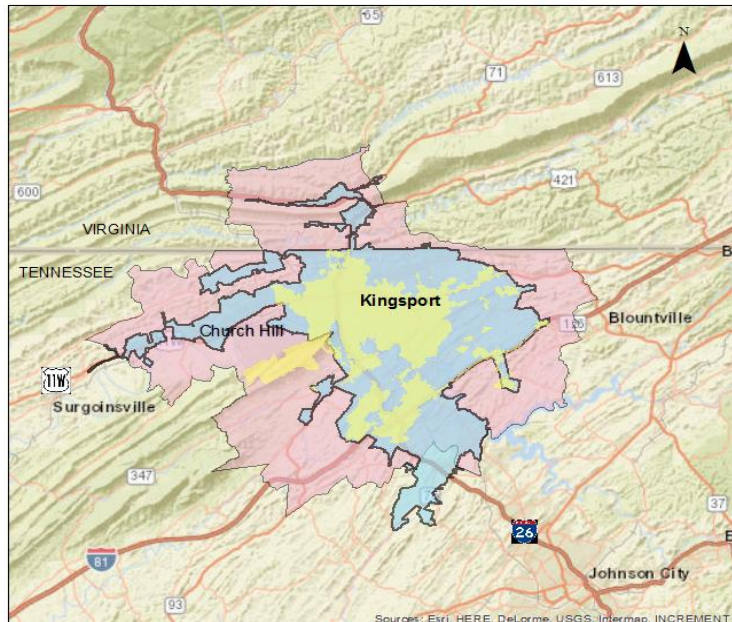
| | | | | | | | |
|-------------------------|---|-------------------|-----------|----------|------------|--------------------|-------------|
| TIP # | TN-2019-008 | TDOT PIN / VA UPC | 126819.00 | Priority | | Lead Agency | TDOT |
| STIP # | 2082115 | | | | | | |
| County | Sullivan, Hawkins | Length | | LRTP# | Page # 6-3 | Conformity Status | NA |
| Route/Project Name | Surface Transportation Block Grant (STBG) Grouping | | | | | Total Project Cost | \$7,362,500 |
| Termini or Intersection | Kingsport MTPO - Sullivan County and Hawkins County | | | | | | |
| Project Description | See TIP grouping description for a comprehensive listing of activities included but not limited for eligibility | | | | | | |

| Fiscal Year | Phase | Funding Type | Total Funds | Fed Funds | State Funds | Local Funds |
|-------------|----------------|--------------|-------------|-------------|-------------|-------------|
| FY20 | PE, ROW, CONST | STBG | \$3,750,000 | \$3,000,000 | \$750,000 | \$0 |
| FY21 | PE, ROW, CONST | STBG | \$75,000 | \$60,000 | \$15,000 | \$0 |
| FY22 | PE, ROW, CONST | STBG | \$3,500,000 | \$2,800,000 | \$700,000 | \$0 |
| FY23 | PE, ROW, CONST | STBG | \$37,500 | \$30,000 | \$7,500 | \$0 |

| | | | | |
|---|-------------|--|----------------------|----|
| Remarks | Amendment # | | Admin Modification # | 18 |
| TDOT Modification #491 - Add \$1,500,000 STBG funds to FY22 | | | | |

Legend

- Kingsport City Limits
- Kingsport UZA 2010
- Kingsport MTPO Planning Area





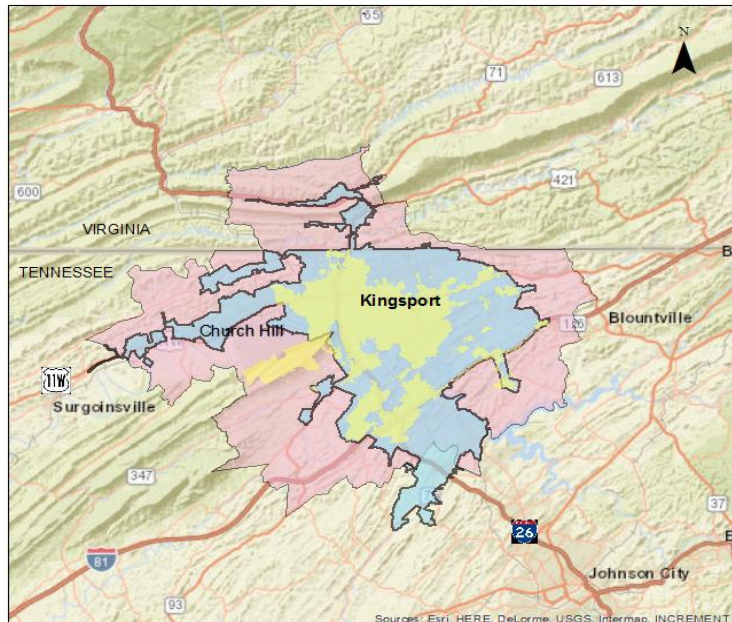
| | | | | | | | |
|-------------------------|---|-------------------|-----------|----------|------------|--------------------|-------------|
| TIP # | TN-2019-008 | TDOT PIN / VA UPC | 126819.00 | Priority | | Lead Agency | TDOT |
| STIP # | 2082115 | | | | | | |
| County | Sullivan, Hawkins | Length | | LRTP# | Page # 6-3 | Conformity Status | NA |
| Route/Project Name | Surface Transportation Block Grant (STBG) Grouping | | | | | Total Project Cost | \$9,885,000 |
| Termini or Intersection | Kingsport MTPO - Sullivan County and Hawkins County | | | | | | |
| Project Description | See TIP grouping description for a comprehensive listing of activities included but not limited for eligibility | | | | | | |

| Fiscal Year | Phase | Funding Type | Total Funds | Fed Funds | State Funds | Local Funds |
|-------------|----------------|--------------|-------------|-------------|-------------|-------------|
| FY20 | PE, ROW, CONST | STBG | \$3,750,000 | \$3,000,000 | \$750,000 | \$0 |
| FY21 | PE, ROW, CONST | STBG | \$75,000 | \$60,000 | \$15,000 | \$0 |
| FY22 | PE, ROW, CONST | STBG | \$3,500,000 | \$2,800,000 | \$700,000 | \$0 |
| FY23 | PE, ROW, CONST | STBG | \$2,560,000 | \$2,048,000 | \$512,000 | \$0 |

| | | | | |
|---|-------------|--|----------------------|----|
| Remarks | Amendment # | | Admin Modification # | 28 |
| TDOT Modification #665 - Add \$2,522,500 STBG funds to FY23 | | | | |

Legend

- Kingsport City Limits
- Kingsport UZA 2010
- Kingsport MTPO Planning Area



Beg. Balance STBG (local): \$8,830,089

Kingsport MTPO FY 2020 - 2023 TIP Highway Funding Summary

Tennessee Highway Totals for FY20

| Funding Source | Total Programmed Funds | Programmed Federal Funds | Programmed State Funds | Programmed Local Funds | Surplus / Deficit ** | Anticipated Revenue | Available Unprogrammed Balance |
|----------------|------------------------|--------------------------|------------------------|------------------------|----------------------|---------------------|--------------------------------|
| HSIP | \$400,000 | \$360,000 | \$40,000 | \$0 | \$0 | \$400,000 | \$0 |
| HSIP-R | \$425 | \$383 | \$43 | \$0 | \$0 | \$425 | \$0 |
| NHPP | \$385,000 | \$322,000 | \$63,000 | \$0 | \$0 | \$385,000 | \$0 |
| R-STBG (State) | \$131,500 | \$105,200 | \$26,300 | \$0 | \$0 | \$131,500 | \$0 |
| STBG (State) | \$12,150,000 | \$9,720,000 | \$2,430,000 | \$0 | \$0 | \$12,150,000 | \$0 |
| STBG (Local)* | \$3,185,000 | \$2,565,000 | \$80,000 | \$540,000 | \$6,265,089 | \$1,553,905 | \$7,818,994 |
| O & M (Local) | \$17,560,000 | \$0 | \$0 | \$17,560,000 | \$0 | \$17,560,000 | 0 |
| Totals: | \$33,811,925 | \$13,072,583 | \$2,639,343 | \$18,100,000 | \$0 | \$32,180,830 | \$7,818,994 |

*The State Funds column for this line item refers to projects that may include the State's participation requiring the use of STBG funds

Tennessee Highway Totals for FY21

| Funding Source | Total Programmed Funds | Programmed Federal Funds | Programmed State Funds | Programmed Local Funds | Surplus / Deficit ** | Anticipated Revenue | Available Unprogrammed Balance |
|----------------|------------------------|--------------------------|------------------------|------------------------|----------------------|---------------------|--------------------------------|
| HSIP | \$78,125 | \$70,313 | \$7,813 | \$0 | \$0 | \$78,125 | \$0 |
| HSIP-R | \$350 | \$315 | \$35 | \$0 | \$0 | \$350 | \$0 |
| NHPP | \$8,000,000 | \$6,400,000 | \$1,600,000 | \$0 | \$0 | \$8,000,000 | \$0 |
| STBG (State) | \$2,475,000 | \$1,980,000 | \$495,000 | \$0 | \$0 | \$2,475,000 | \$0 |
| STBG (Local)* | \$200,000 | \$160,000 | \$0 | \$40,000 | \$7,658,994 | \$1,543,424 | \$9,202,418 |
| O & M (Local) | \$17,735,600 | \$0 | \$0 | \$17,735,600 | \$0 | \$17,735,600 | \$0 |
| Totals: | \$28,489,075 | \$8,610,628 | \$2,102,848 | \$17,775,600 | \$7,658,994 | \$29,832,499 | \$9,202,418 |

*The State Funds column for this line item refers to projects that may include the State's participation requiring the use of STBG funds

Tennessee Highway Totals for FY22

| Funding Source | Total Programmed Funds | Programmed Federal Funds | Programmed State Funds | Programmed Local Funds | Surplus / Deficit ** | Anticipated Revenue | Available Unprogrammed Balance |
|----------------|------------------------|--------------------------|------------------------|------------------------|----------------------|---------------------|--------------------------------|
| ACSTBG | \$6,802,000 | \$0 | \$6,802,000 | \$0 | \$0 | \$6,802,000 | \$0 |
| HSIP | \$200,000 | \$180,000 | \$20,000 | \$0 | \$0 | \$200,000 | \$0 |
| HSIP-R | \$150 | \$135 | \$15 | \$0 | \$0 | \$150 | \$0 |
| NHPP | \$8,150,000 | \$6,585,000 | \$1,565,000 | \$0 | \$0 | \$8,150,000 | \$0 |
| STBG (State) | \$27,500,000 | \$22,000,000 | \$5,500,000 | \$0 | \$0 | \$27,500,000 | 0 |
| STBG (Local)* | \$16,363,388 | \$13,090,710 | \$0 | \$3,270,678 | -\$3,888,292 | \$4,782,933 | \$894,641 |
| ACSTBG (Local) | \$0 | \$0 | \$0 | \$0 | \$0 | \$0 | \$0 |
| CRRSAA-HIP | \$611,612 | \$611,612 | \$0 | \$0 | \$0 | \$611,612 | \$0 |
| O & M (Local) | \$17,912,956 | \$0 | \$0 | \$17,912,956 | \$0 | \$17,912,956 | \$0 |
| LOCAL | \$2,086,480 | \$0 | \$0 | \$2,086,480 | \$0 | \$2,086,480 | \$0 |
| Totals: | \$79,626,586 | \$42,467,457 | \$13,887,015 | \$23,270,114 | -\$3,888,292 | \$68,046,131 | \$894,641 |

*The State Funds column for this line item refers to projects that may include the State's participation requiring the use of STBG funds

Tennessee Highway Totals for FY23

| Funding Source | Total Programmed Funds | Programmed Federal Funds | Programmed State Funds | Programmed Local Funds | Surplus / Deficit ** | Anticipated Revenue | Available Unprogrammed Balance |
|----------------|------------------------|--------------------------|------------------------|------------------------|----------------------|---------------------|--------------------------------|
| HSIP | \$31,250 | \$28,125 | \$3,125 | \$0 | \$0 | \$31,250 | \$0 |
| HSIP-R | \$75 | \$68 | \$8 | \$0 | \$0 | \$75 | \$0 |
| NHPP | \$8,805,000 | \$7,914,000 | \$891,000 | \$0 | \$0 | \$8,805,000 | \$0 |
| STBG (State) | \$37,500 | \$30,000 | \$7,500 | \$0 | \$0 | \$37,500 | \$0 |
| STBG (Local)* | \$204,000 | \$163,200 | \$0 | \$40,800 | \$731,441 | \$0 | \$731,441 |
| O & M (Local) | \$18,092,085 | \$0 | \$0 | \$18,092,085 | \$0 | \$18,092,085 | \$0 |
| LOCAL | \$3,000,000 | \$0 | \$0 | \$3,000,000 | \$0 | \$3,000,000 | \$0 |
| Totals: | \$27,169,910 | \$8,135,393 | \$901,633 | \$18,132,885 | \$731,441 | \$29,965,910 | \$731,441 |

*The State Funds column for this line item refers to projects that may include the State's participation requiring the use of STBG funds

** surplus or deficit represents the MTPO's objective to maintain fiscal constraint for projects and funding designated within the Kingsport MTPO area

Beg. Balance STBG (local): \$8,830,089

Kingsport MTPO FY 2020 - 2023 TIP Highway Funding Summary

Tennessee Highway Totals for FY20

| Funding Source | Total Programmed Funds | Programmed Federal Funds | Programmed State Funds | Programmed Local Funds | Surplus / Deficit ** | Anticipated Revenue | Available Unprogrammed Balance |
|----------------|------------------------|--------------------------|------------------------|------------------------|----------------------|---------------------|--------------------------------|
| HSIP | \$400,000 | \$360,000 | \$40,000 | \$0 | \$0 | \$400,000 | \$0 |
| HSIP-R | \$425 | \$383 | \$43 | \$0 | \$0 | \$425 | \$0 |
| NHPP | \$385,000 | \$322,000 | \$63,000 | \$0 | \$0 | \$385,000 | \$0 |
| R-STBG (State) | \$131,500 | \$105,200 | \$26,300 | \$0 | \$0 | \$131,500 | \$0 |
| STBG (State) | \$12,150,000 | \$9,720,000 | \$2,430,000 | \$0 | \$0 | \$12,150,000 | \$0 |
| STBG (Local)* | \$3,185,000 | \$2,565,000 | \$80,000 | \$540,000 | \$6,265,089 | \$1,553,905 | \$7,818,994 |
| O & M (Local) | \$17,560,000 | \$0 | \$0 | \$17,560,000 | \$0 | \$17,560,000 | \$0 |
| Totals: | \$33,811,925 | \$13,072,583 | \$2,639,343 | \$18,100,000 | \$0 | \$32,180,830 | \$7,818,994 |

*The State Funds column for this line item refers to projects that may include the State's participation requiring the use of STBG funds

Tennessee Highway Totals for FY21

| Funding Source | Total Programmed Funds | Programmed Federal Funds | Programmed State Funds | Programmed Local Funds | Surplus / Deficit ** | Anticipated Revenue | Available Unprogrammed Balance |
|----------------|------------------------|--------------------------|------------------------|------------------------|----------------------|---------------------|--------------------------------|
| HSIP | \$78,125 | \$70,313 | \$7,813 | \$0 | \$0 | \$78,125 | \$0 |
| HSIP-R | \$350 | \$315 | \$35 | \$0 | \$0 | \$350 | \$0 |
| NHPP | \$8,000,000 | \$6,400,000 | \$1,600,000 | \$0 | \$0 | \$8,000,000 | \$0 |
| STBG (State) | \$2,475,000 | \$1,980,000 | \$495,000 | \$0 | \$0 | \$2,475,000 | \$0 |
| STBG (Local)* | \$200,000 | \$160,000 | \$0 | \$40,000 | \$7,658,994 | \$1,543,424 | \$9,202,418 |
| O & M (Local) | \$17,735,600 | \$0 | \$0 | \$17,735,600 | \$0 | \$17,735,600 | \$0 |
| Totals: | \$28,489,075 | \$8,610,628 | \$2,102,848 | \$17,775,600 | \$7,658,994 | \$29,832,499 | \$9,202,418 |

*The State Funds column for this line item refers to projects that may include the State's participation requiring the use of STBG funds

Tennessee Highway Totals for FY22

| Funding Source | Total Programmed Funds | Programmed Federal Funds | Programmed State Funds | Programmed Local Funds | Surplus / Deficit ** | Anticipated Revenue | Available Unprogrammed Balance |
|----------------|------------------------|--------------------------|------------------------|------------------------|----------------------|---------------------|--------------------------------|
| ACSTBG | \$6,802,000 | \$0 | \$6,802,000 | \$0 | \$0 | \$6,802,000 | \$0 |
| HSIP | \$200,000 | \$180,000 | \$20,000 | \$0 | \$0 | \$200,000 | \$0 |
| HSIP-R | \$150 | \$135 | \$15 | \$0 | \$0 | \$150 | \$0 |
| NHPP | \$8,150,000 | \$6,585,000 | \$1,565,000 | \$0 | \$0 | \$8,150,000 | \$0 |
| STBG (State) | \$27,500,000 | \$22,000,000 | \$5,500,000 | \$0 | \$0 | \$27,500,000 | \$0 |
| STBG (Local)* | \$16,363,388 | \$13,090,710 | \$0 | \$3,270,678 | -\$3,888,292 | \$4,782,933 | \$894,641 |
| ACSTBG (Local) | \$0 | \$0 | \$0 | \$0 | \$0 | \$0 | \$0 |
| CRRSAA-HIP | \$611,612 | \$611,612 | \$0 | \$0 | \$0 | \$611,612 | \$0 |
| O & M (Local) | \$17,912,956 | \$0 | \$0 | \$17,912,956 | \$0 | \$17,912,956 | \$0 |
| LOCAL | \$2,086,480 | \$0 | \$0 | \$2,086,480 | \$0 | \$2,086,480 | \$0 |
| Totals: | \$79,626,586 | \$42,467,457 | \$13,887,015 | \$23,270,114 | -\$3,888,292 | \$68,046,131 | \$894,641 |

*The State Funds column for this line item refers to projects that may include the State's participation requiring the use of STBG funds

Tennessee Highway Totals for FY23

| Funding Source | Total Programmed Funds | Programmed Federal Funds | Programmed State Funds | Programmed Local Funds | Surplus / Deficit ** | Anticipated Revenue | Available Unprogrammed Balance |
|----------------|------------------------|--------------------------|------------------------|------------------------|----------------------|---------------------|--------------------------------|
| HSIP | \$31,250 | \$28,125 | \$3,125 | \$0 | \$0 | \$31,250 | \$0 |
| HSIP-R | \$75 | \$68 | \$8 | \$0 | \$0 | \$75 | \$0 |
| NHPP | \$8,805,000 | \$7,914,000 | \$891,000 | \$0 | \$0 | \$8,805,000 | \$0 |
| STBG (State) | \$2,560,000 | \$2,048,000 | \$512,000 | \$0 | \$0 | \$2,560,000 | \$0 |
| STBG (Local)* | \$204,000 | \$163,200 | \$0 | \$40,800 | \$731,441 | \$0 | \$731,441 |
| O & M (Local) | \$18,092,085 | \$0 | \$0 | \$18,092,085 | \$0 | \$18,092,085 | \$0 |
| LOCAL | \$3,000,000 | \$0 | \$0 | \$3,000,000 | \$0 | \$3,000,000 | \$0 |
| Totals: | \$29,692,410 | \$10,153,393 | \$1,406,133 | \$18,132,885 | \$731,441 | \$32,488,410 | \$731,441 |

*The State Funds column for this line item refers to projects that may include the State's participation requiring the use of STBG funds

** surplus or deficit represents the MTPO's objective to maintain fiscal constraint for projects and funding designated within the Kingsport MTPO area