



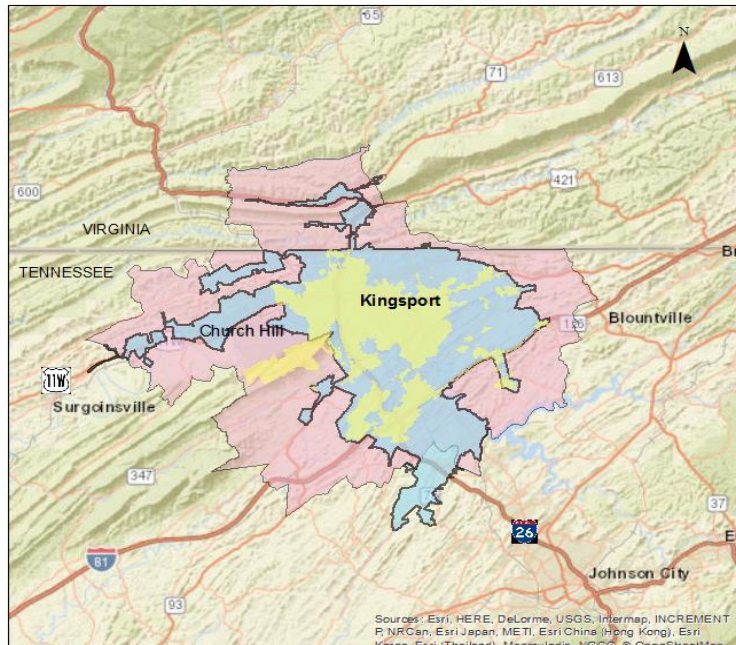
TIP #	TN-2019-006	TDOT PIN / VA UPC	126818.00	Priority	<input type="text"/>	Lead Agency	TDOT
STIP #	2082110						
County	Sullivan, Hawkins	Length	<input type="text"/>	LRTP#	Page # 6-2	Conformity Status	NA
Route/Project Name	National Highway Performance Program (NHPP) Grouping					Total Project Cost	\$13,350,000
Termini or Intersection	Kingsport MTPO - Sullivan County and Hawkins County						
Project Description	See TIP grouping description for a comprehensive listing of activities included but not limited for eligibility						

Fiscal Year	Phase	Funding Type	Total Funds	Fed Funds	State Funds	Local Funds
FY20	PE, ROW, CONST	NHPP	\$245,000	\$196,000	\$49,000	\$0
FY21	PE, ROW, CONST	NHPP	\$8,000,000	\$6,400,000	\$1,600,000	\$0
FY22	PE, ROW, CONST	NHPP	\$5,000,000	\$4,000,000	\$1,000,000	\$0
FY23	PE, ROW, CONST	NHPP	\$105,000	\$84,000	\$21,000	\$0

Remarks	Amendment # <input type="text"/>	Admin Modification # <input type="text" value="13"/>
TDOT modification #430 - Add \$4,860,000 NHPP funds to FY22		

Legend

- Kingsport City Limits
- Kingsport UZA 2010
- Kingsport MTPO Planning Area





TIP #
TDOT PIN / VA UPC
Priority
Lead Agency

STIP #

County
Length
LRTP#
Conformity Status

Route/Project Name
Total Project Cost

Termini or Intersection

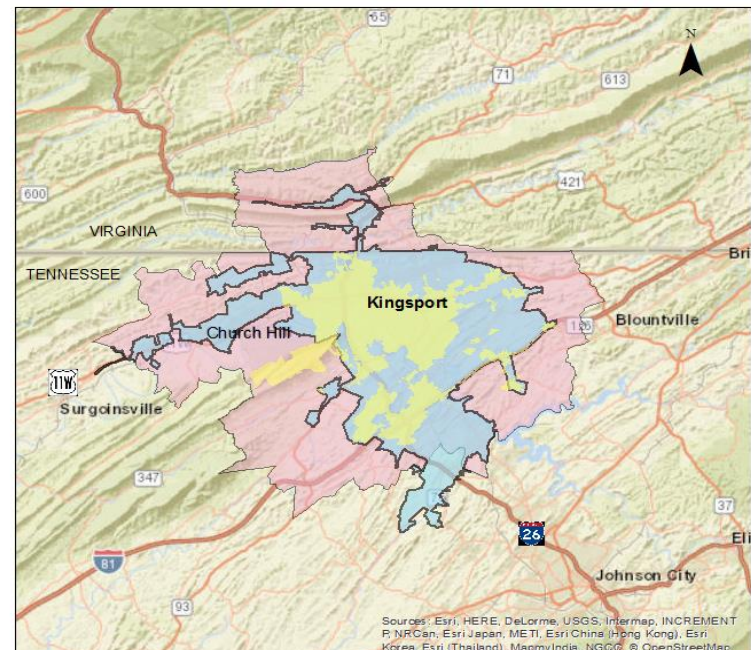
Project Description

Fiscal Year	Phase	Funding Type	Total Funds	Fed Funds	State Funds	Local Funds
FY20	PE, ROW, CONST	NHPP	\$245,000	\$196,000	\$49,000	\$0
FY21	PE, ROW, CONST	NHPP	\$8,000,000	\$6,400,000	\$1,600,000	\$0
FY22	PE, ROW, CONST	NHPP	\$7,500,000	\$6,000,000	\$1,500,000	\$0
FY23	PE, ROW, CONST	NHPP	\$105,000	\$84,000	\$21,000	\$0

Remarks

Amendment #
Admin Modification #

- Legend**
- Kingsport City Limits
 - Kingsport UZA 2010
 - Kingsport MTPO Planning Area



Kingsport MTPO FY 2020 - 2023 TIP Highway Funding Summary

Beg. Balance STBG (local): \$8,830,089

Tennessee Highway Totals for FY20

Funding Source	Total Programmed Funds	Programmed Federal Funds	Programmed State Funds	Programmed Local Funds	Surplus / Deficit **	Anticipated Revenue	Available Unprogrammed Balance
HSIP	\$400,000	\$360,000	\$40,000	\$0	\$0	\$400,000	\$0
HSIP-R	\$425	\$383	\$43	\$0	\$0	\$425	\$0
NHPP	\$385,000	\$322,000	\$63,000	\$0	\$0	\$385,000	\$0
R-STBG (State)	\$131,500	\$105,200	\$26,300	\$0	\$0	\$131,500	\$0
STBG (State)	\$12,150,000	\$9,720,000	\$2,430,000	\$0	\$0	\$12,150,000	\$0
STBG (Local)*	\$3,329,000	\$2,680,200	\$80,000	\$568,800	\$6,149,889	\$1,553,905	\$7,703,794
O & M (Local)	\$17,560,000	\$0	\$0	\$17,560,000	\$0	\$17,560,000	\$0
Totals:	\$33,955,925	\$13,187,783	\$2,639,343	\$18,128,800	\$0	\$32,180,830	\$7,703,794

**The State Funds column for this line item refers to projects that may include the State's participation requiring the use of STBG funds*

Tennessee Highway Totals for FY21

Funding Source	Total Programmed Funds	Programmed Federal Funds	Programmed State Funds	Programmed Local Funds	Surplus / Deficit **	Anticipated Revenue	Available Unprogrammed Balance
HSIP	\$78,125	\$70,313	\$7,813	\$0	\$0	\$78,125	\$0
HSIP-R	\$350	\$315	\$35	\$0	\$0	\$350	\$0
NHPP	\$8,000,000	\$6,400,000	\$1,600,000	\$0	\$0	\$8,000,000	\$0
STBG (State)	\$2,475,000	\$1,980,000	\$495,000	\$0	\$0	\$2,475,000	\$0
STBG (Local)*	\$1,000,000	\$160,000	\$0	\$840,000	\$7,543,794	\$1,543,424	\$9,087,218
O & M (Local)	\$17,735,600	\$0	\$0	\$17,735,600	\$0	\$17,735,600	\$0
Totals:	\$29,289,075	\$8,610,628	\$2,102,848	\$18,575,600	\$7,543,794	\$29,832,499	\$9,087,218

**The State Funds column for this line item refers to projects that may include the State's participation requiring the use of STBG funds*

Tennessee Highway Totals for FY22

Funding Source	Total Programmed Funds	Programmed Federal Funds	Programmed State Funds	Programmed Local Funds	Surplus / Deficit **	Anticipated Revenue	Available Unprogrammed Balance
ACSTBG	\$30,802,000	\$0	\$30,802,000	\$0	\$0	\$30,802,000	\$0
HSIP	\$46,875	\$42,188	\$4,688	\$0	\$0	\$46,875	\$0
HSIP-R	\$150	\$135	\$15	\$0	\$0	\$150	\$0
NHPP	\$5,650,000	\$4,585,000	\$1,065,000	\$0	\$0	\$5,650,000	\$0
STBG (State)	\$3,500,000	\$2,800,000	\$700,000	\$0	\$0	\$3,500,000	\$0
STBG (Local)*	\$3,035,000	\$2,428,000	\$0	\$607,000	\$6,659,218	\$1,594,607	\$8,253,825
ACSTBG (Local)	\$7,888,388	\$0	\$0	\$7,888,388	\$0	\$7,888,388	\$0
CRRSAA-HIP	\$611,612	\$611,612	\$0	\$0	\$0	\$611,612	\$0
O & M (Local)	\$17,912,956	\$0	\$0	\$17,912,956	\$0	\$17,912,956	\$0
Totals:	\$69,446,981	\$10,466,935	\$32,571,703	\$26,408,344	\$6,659,218	\$68,006,588	\$8,253,825

**The State Funds column for this line item refers to projects that may include the State's participation requiring the use of STBG funds*

Tennessee Highway Totals for FY23

Funding Source	Total Programmed Funds	Programmed Federal Funds	Programmed State Funds	Programmed Local Funds	Surplus / Deficit **	Anticipated Revenue	Available Unprogrammed Balance
HSIP	\$31,250	\$28,125	\$3,125	\$0	\$0	\$31,250	\$0
HSIP-R	\$75	\$68	\$8	\$0	\$0	\$75	\$0
NHPP	\$8,805,000	\$7,914,000	\$891,000	\$0	\$0	\$8,805,000	\$0
STBG (State)	\$37,500	\$30,000	\$7,500	\$0	\$0	\$37,500	\$0
STBG (Local)*	\$2,500,000	\$2,000,000	\$0	\$500,000	\$6,253,825	\$1,594,607	\$7,848,432
O & M (Local)	\$18,092,085	\$0	\$0	\$18,092,085	\$0	\$18,092,085	\$0
LOCAL	\$3,000,000	\$0	\$0	\$3,000,000	\$0	\$3,000,000	\$0
Totals:	\$29,465,910	\$9,972,193	\$901,633	\$18,592,085	\$6,253,825	\$31,560,517	\$7,848,432

**The State Funds column for this line item refers to projects that may include the State's participation requiring the use of STBG funds*

** surplus or deficit represents the MTPO's objective to maintain fiscal constraint for projects and funding designated within the Kingsport MTPO area

Kingsport MTPO FY 2020 - 2023 TIP Highway Funding Summary

Beg. Balance STBG (local): \$8,830,089

Tennessee Highway Totals for FY20

Funding Source	Total Programmed Funds	Programmed Federal Funds	Programmed State Funds	Programmed Local Funds	Surplus / Deficit **	Anticipated Revenue	Available Unprogrammed Balance
HSIP	\$400,000	\$360,000	\$40,000	\$0	\$0	\$400,000	\$0
HSIP-R	\$425	\$383	\$43	\$0	\$0	\$425	\$0
NHPP	\$385,000	\$322,000	\$63,000	\$0	\$0	\$385,000	\$0
R-STBG (State)	\$131,500	\$105,200	\$26,300	\$0	\$0	\$131,500	\$0
STBG (State)	\$12,150,000	\$9,720,000	\$2,430,000	\$0	\$0	\$12,150,000	\$0
STBG (Local)*	\$3,329,000	\$2,680,200	\$80,000	\$568,800	\$6,149,889	\$1,553,905	\$7,703,794
O & M (Local)	\$17,560,000	\$0	\$0	\$17,560,000	\$0	\$17,560,000	\$0
Totals:	\$33,955,925	\$13,187,783	\$2,639,343	\$18,128,800	\$0	\$32,180,830	\$7,703,794

*The State Funds column for this line item refers to projects that may include the State's participation requiring the use of STBG funds

Tennessee Highway Totals for FY21

Funding Source	Total Programmed Funds	Programmed Federal Funds	Programmed State Funds	Programmed Local Funds	Surplus / Deficit **	Anticipated Revenue	Available Unprogrammed Balance
HSIP	\$78,125	\$70,313	\$7,813	\$0	\$0	\$78,125	\$0
HSIP-R	\$350	\$315	\$35	\$0	\$0	\$350	\$0
NHPP	\$8,000,000	\$6,400,000	\$1,600,000	\$0	\$0	\$8,000,000	\$0
STBG (State)	\$2,475,000	\$1,980,000	\$495,000	\$0	\$0	\$2,475,000	\$0
STBG (Local)*	\$1,000,000	\$160,000	\$0	\$840,000	\$7,543,794	\$1,543,424	\$9,087,218
O & M (Local)	\$17,735,600	\$0	\$0	\$17,735,600	\$0	\$17,735,600	\$0
Totals:	\$29,289,075	\$8,610,628	\$2,102,848	\$18,575,600	\$7,543,794	\$29,832,499	\$9,087,218

*The State Funds column for this line item refers to projects that may include the State's participation requiring the use of STBG funds

Tennessee Highway Totals for FY22

Funding Source	Total Programmed Funds	Programmed Federal Funds	Programmed State Funds	Programmed Local Funds	Surplus / Deficit **	Anticipated Revenue	Available Unprogrammed Balance
ACSTBG	\$30,802,000	\$0	\$30,802,000	\$0	\$0	\$30,802,000	\$0
HSIP	\$46,875	\$42,188	\$4,688	\$0	\$0	\$46,875	\$0
HSIP-R	\$150	\$135	\$15	\$0	\$0	\$150	\$0
NHPP	\$8,150,000	\$6,585,000	\$1,565,000	\$0	\$0	\$8,150,000	\$0
STBG (State)	\$3,500,000	\$2,800,000	\$700,000	\$0	\$0	\$3,500,000	\$0
STBG (Local)*	\$3,035,000	\$2,428,000	\$0	\$607,000	\$6,659,218	\$1,594,607	\$8,253,825
ACSTBG (Local)	\$7,888,388	\$0	\$0	\$7,888,388	\$0	\$7,888,388	\$0
CRRSAA-HIP	\$611,612	\$611,612	\$0	\$0	\$0	\$611,612	\$0
O & M (Local)	\$17,912,956	\$0	\$0	\$17,912,956	\$0	\$17,912,956	\$0
Totals:	\$71,946,981	\$12,466,935	\$33,071,703	\$26,408,344	\$6,659,218	\$70,506,588	\$8,253,825

*The State Funds column for this line item refers to projects that may include the State's participation requiring the use of STBG funds

Tennessee Highway Totals for FY23

Funding Source	Total Programmed Funds	Programmed Federal Funds	Programmed State Funds	Programmed Local Funds	Surplus / Deficit **	Anticipated Revenue	Available Unprogrammed Balance
HSIP	\$31,250	\$28,125	\$3,125	\$0	\$0	\$31,250	\$0
HSIP-R	\$75	\$68	\$8	\$0	\$0	\$75	\$0
NHPP	\$8,805,000	\$7,914,000	\$891,000	\$0	\$0	\$8,805,000	\$0
STBG (State)	\$37,500	\$30,000	\$7,500	\$0	\$0	\$37,500	\$0
STBG (Local)*	\$2,500,000	\$2,000,000	\$0	\$500,000	\$6,253,825	\$1,594,607	\$7,848,432
O & M (Local)	\$18,092,085	\$0	\$0	\$18,092,085	\$0	\$18,092,085	\$0
LOCAL	\$3,000,000	\$0	\$0	\$3,000,000	\$0	\$3,000,000	\$0
Totals:	\$29,465,910	\$9,972,193	\$901,633	\$18,592,085	\$6,253,825	\$31,560,517	\$7,848,432

*The State Funds column for this line item refers to projects that may include the State's participation requiring the use of STBG funds

** surplus or deficit represents the MTPO's objective to maintain fiscal constraint for projects and funding designated within the Kingsport MTPO area