



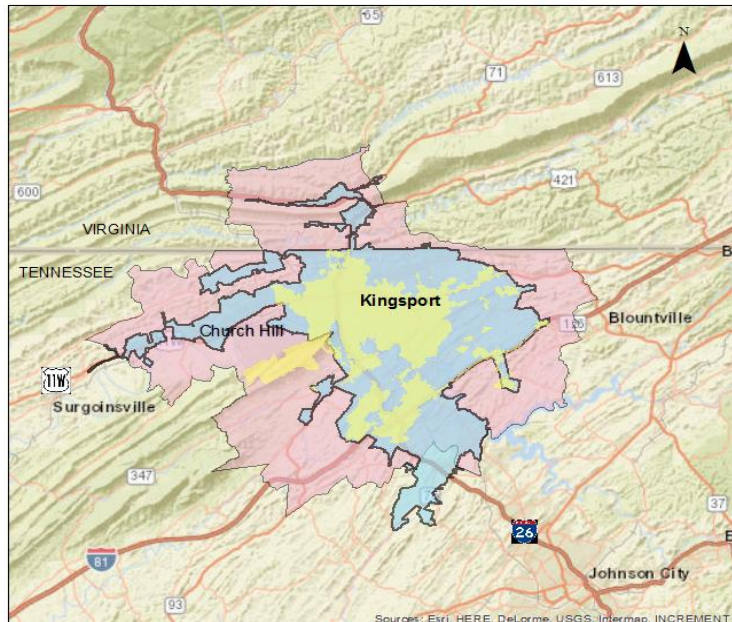
| | | | | | | | |
|-------------------------|---|-------------------|-----------|----------|------------|--------------------|-------------|
| TIP # | TN-2019-008 | TDOT PIN / VA UPC | 126819.00 | Priority | | Lead Agency | TDOT |
| STIP # | 2082115 | | | | | | |
| County | Sullivan, Hawkins | Length | | LRTP# | Page # 6-3 | Conformity Status | NA |
| Route/Project Name | Surface Transportation Block Grant (STBG) Grouping | | | | | Total Project Cost | \$5,862,500 |
| Termini or Intersection | Kingsport MTPO - Sullivan County and Hawkins County | | | | | | |
| Project Description | See TIP grouping description for a comprehensive listing of activities included but not limited for eligibility | | | | | | |

| Fiscal Year | Phase | Funding Type | Total Funds | Fed Funds | State Funds | Local Funds |
|-------------|----------------|--------------|-------------|-------------|-------------|-------------|
| FY20 | PE, ROW, CONST | STBG | \$3,750,000 | \$3,000,000 | \$750,000 | \$0 |
| FY21 | PE, ROW, CONST | STBG | \$75,000 | \$60,000 | \$15,000 | \$0 |
| FY22 | PE, ROW, CONST | STBG | \$2,000,000 | \$1,600,000 | \$400,000 | \$0 |
| FY23 | PE, ROW, CONST | STBG | \$37,500 | \$30,000 | \$7,500 | \$0 |

| | | | | |
|---|-------------|--|----------------------|----|
| Remarks | Amendment # | | Admin Modification # | 16 |
| TDOT Modification #461 - Add \$1,950,000 STBG funds to FY22 | | | | |

Legend

- Kingsport City Limits
- Kingsport UZA 2010
- Kingsport MTPO Planning Area





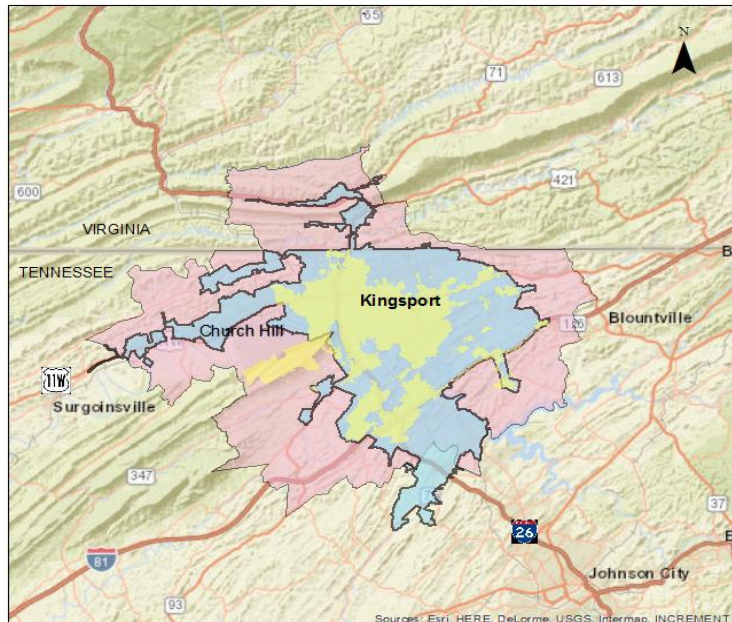
| | | | | | | | |
|-------------------------|---|-------------------|-----------|----------|------------|--------------------|-------------|
| TIP # | TN-2019-008 | TDOT PIN / VA UPC | 126819.00 | Priority | | Lead Agency | TDOT |
| STIP # | 2082115 | | | | | | |
| County | Sullivan, Hawkins | Length | | LRTP# | Page # 6-3 | Conformity Status | NA |
| Route/Project Name | Surface Transportation Block Grant (STBG) Grouping | | | | | Total Project Cost | \$7,362,500 |
| Termini or Intersection | Kingsport MTPO - Sullivan County and Hawkins County | | | | | | |
| Project Description | See TIP grouping description for a comprehensive listing of activities included but not limited for eligibility | | | | | | |

| Fiscal Year | Phase | Funding Type | Total Funds | Fed Funds | State Funds | Local Funds |
|-------------|----------------|--------------|-------------|-------------|-------------|-------------|
| FY20 | PE, ROW, CONST | STBG | \$3,750,000 | \$3,000,000 | \$750,000 | \$0 |
| FY21 | PE, ROW, CONST | STBG | \$75,000 | \$60,000 | \$15,000 | \$0 |
| FY22 | PE, ROW, CONST | STBG | \$3,500,000 | \$2,800,000 | \$700,000 | \$0 |
| FY23 | PE, ROW, CONST | STBG | \$37,500 | \$30,000 | \$7,500 | \$0 |

| | | | | |
|---|-------------|--|----------------------|----|
| Remarks | Amendment # | | Admin Modification # | 18 |
| TDOT Modification #491 - Add \$1,500,000 STBG funds to FY22 | | | | |

Legend

- Kingsport City Limits
- Kingsport UZA 2010
- Kingsport MTPO Planning Area



Beg. Balance STBG (local): \$8,830,089

Kingsport MTPO FY 2020 - 2023 TIP Highway Funding Summary

Tennessee Highway Totals for FY20

| Funding Source | Total Programmed Funds | Programmed Federal Funds | Programmed State Funds | Programmed Local Funds | Surplus / Deficit ** | Anticipated Revenue | Available Unprogrammed Balance |
|----------------|------------------------|--------------------------|------------------------|------------------------|----------------------|---------------------|--------------------------------|
| HSIP | \$400,000 | \$360,000 | \$40,000 | \$0 | \$0 | \$400,000 | \$0 |
| HSIP-R | \$425 | \$383 | \$43 | \$0 | \$0 | \$425 | \$0 |
| NHPP | \$385,000 | \$322,000 | \$63,000 | \$0 | \$0 | \$385,000 | \$0 |
| R-STBG (State) | \$131,500 | \$105,200 | \$26,300 | \$0 | \$0 | \$131,500 | \$0 |
| STBG (State) | \$12,150,000 | \$9,720,000 | \$2,430,000 | \$0 | \$0 | \$12,150,000 | \$0 |
| STBG (Local)* | \$3,329,000 | \$2,680,200 | \$80,000 | \$568,800 | \$6,149,889 | \$1,553,905 | \$7,703,794 |
| O & M (Local) | \$17,560,000 | \$0 | \$0 | \$17,560,000 | \$0 | \$17,560,000 | 0 |
| Totals: | \$33,955,925 | \$13,187,783 | \$2,639,343 | \$18,128,800 | \$0 | \$32,180,830 | \$7,703,794 |

*The State Funds column for this line item refers to projects that may include the State's participation requiring the use of STBG funds

Tennessee Highway Totals for FY21

| Funding Source | Total Programmed Funds | Programmed Federal Funds | Programmed State Funds | Programmed Local Funds | Surplus / Deficit ** | Anticipated Revenue | Available Unprogrammed Balance |
|----------------|------------------------|--------------------------|------------------------|------------------------|----------------------|---------------------|--------------------------------|
| HSIP | \$78,125 | \$70,313 | \$7,813 | \$0 | \$0 | \$78,125 | \$0 |
| HSIP-R | \$350 | \$315 | \$35 | \$0 | \$0 | \$350 | \$0 |
| NHPP | \$8,000,000 | \$6,400,000 | \$1,600,000 | \$0 | \$0 | \$8,000,000 | \$0 |
| STBG (State) | \$2,475,000 | \$1,980,000 | \$495,000 | \$0 | \$0 | \$2,475,000 | \$0 |
| STBG (Local)* | \$1,150,000 | \$280,000 | \$0 | \$870,000 | \$7,423,794 | \$1,543,424 | \$8,967,218 |
| O & M (Local) | \$17,735,600 | \$0 | \$0 | \$17,735,600 | \$0 | \$17,735,600 | \$0 |
| Totals: | \$29,439,075 | \$8,730,628 | \$2,102,848 | \$18,605,600 | \$7,423,794 | \$29,832,499 | \$8,967,218 |

*The State Funds column for this line item refers to projects that may include the State's participation requiring the use of STBG funds

Tennessee Highway Totals for FY22

| Funding Source | Total Programmed Funds | Programmed Federal Funds | Programmed State Funds | Programmed Local Funds | Surplus / Deficit ** | Anticipated Revenue | Available Unprogrammed Balance |
|----------------|------------------------|--------------------------|------------------------|------------------------|----------------------|---------------------|--------------------------------|
| ACSTBG | \$6,802,000 | \$0 | \$6,802,000 | \$0 | \$0 | \$6,802,000 | \$0 |
| HSIP | \$46,875 | \$42,188 | \$4,688 | \$0 | \$0 | \$46,875 | \$0 |
| HSIP-R | \$150 | \$135 | \$15 | \$0 | \$0 | \$150 | \$0 |
| NHPP | \$5,060,000 | \$4,054,000 | \$1,006,000 | \$0 | \$0 | \$5,060,000 | \$0 |
| STBG (State) | \$2,000,000 | \$1,600,000 | \$400,000 | \$0 | \$0 | \$2,000,000 | 0 |
| STBG (Local)* | \$10,723,388 | \$8,578,710 | \$0 | \$2,144,678 | \$388,508 | \$1,553,905 | \$1,942,413 |
| CRRSAA-HIP | \$611,612 | \$611,612 | \$0 | \$0 | \$0 | \$611,612 | \$0 |
| O & M (Local) | \$17,912,956 | \$0 | \$0 | \$17,912,956 | \$0 | \$17,912,956 | \$0 |
| Totals: | \$43,156,981 | \$14,886,645 | \$8,212,703 | \$20,057,634 | \$388,508 | \$33,987,498 | \$1,942,413 |

*The State Funds column for this line item refers to projects that may include the State's participation requiring the use of STBG funds

Tennessee Highway Totals for FY23

| Funding Source | Total Programmed Funds | Programmed Federal Funds | Programmed State Funds | Programmed Local Funds | Surplus / Deficit ** | Anticipated Revenue | Available Unprogrammed Balance |
|----------------|------------------------|--------------------------|------------------------|------------------------|----------------------|---------------------|--------------------------------|
| HSIP | \$31,250 | \$28,125 | \$3,125 | \$0 | \$0 | \$31,250 | \$0 |
| HSIP-R | \$75 | \$68 | \$8 | \$0 | \$0 | \$75 | \$0 |
| NHPP | \$8,805,000 | \$7,914,000 | \$891,000 | \$0 | \$0 | \$8,805,000 | \$0 |
| STBG (State) | \$37,500 | \$30,000 | \$7,500 | \$0 | \$0 | \$37,500 | \$0 |
| STBG (Local)* | \$2,500,000 | \$2,000,000 | \$0 | \$500,000 | -\$57,587 | \$1,553,905 | \$1,496,318 |
| O & M (Local) | \$18,092,085 | \$0 | \$0 | \$18,092,085 | \$0 | \$18,092,085 | \$0 |
| LOCAL | \$3,000,000 | \$0 | \$0 | \$3,000,000 | \$0 | \$3,000,000 | \$0 |
| Totals: | \$29,465,910 | \$9,972,193 | \$901,633 | \$18,592,085 | -\$57,587 | \$31,519,815 | \$1,496,318 |

*The State Funds column for this line item refers to projects that may include the State's participation requiring the use of STBG funds

** surplus or deficit represents the MTPO's objective to maintain fiscal constraint for projects and funding designated within the Kingsport MTPO area

Kingsport MTPO FY 2020 - 2023 TIP Highway Funding Summary

Beg. Balance STBG (local): \$8,830,089

Tennessee Highway Totals for FY20

| Funding Source | Total Programmed Funds | Programmed Federal Funds | Programmed State Funds | Programmed Local Funds | Surplus / Deficit ** | Anticipated Revenue | Available Unprogrammed Balance |
|----------------|------------------------|--------------------------|------------------------|------------------------|----------------------|---------------------|--------------------------------|
| HSIP | \$400,000 | \$360,000 | \$40,000 | \$0 | \$0 | \$400,000 | \$0 |
| HSIP-R | \$425 | \$383 | \$43 | \$0 | \$0 | \$425 | \$0 |
| NHPP | \$385,000 | \$322,000 | \$63,000 | \$0 | \$0 | \$385,000 | \$0 |
| R-STBG (State) | \$131,500 | \$105,200 | \$26,300 | \$0 | \$0 | \$131,500 | \$0 |
| STBG (State) | \$12,150,000 | \$9,720,000 | \$2,430,000 | \$0 | \$0 | \$12,150,000 | \$0 |
| STBG (Local)* | \$3,329,000 | \$2,680,200 | \$80,000 | \$568,800 | \$6,149,889 | \$1,553,905 | \$7,703,794 |
| O & M (Local) | \$17,560,000 | \$0 | \$0 | \$17,560,000 | \$0 | \$17,560,000 | 0 |
| Totals: | \$33,955,925 | \$13,187,783 | \$2,639,343 | \$18,128,800 | \$0 | \$32,180,830 | \$7,703,794 |

*The State Funds column for this line item refers to projects that may include the State's participation requiring the use of STBG funds

Tennessee Highway Totals for FY21

| Funding Source | Total Programmed Funds | Programmed Federal Funds | Programmed State Funds | Programmed Local Funds | Surplus / Deficit ** | Anticipated Revenue | Available Unprogrammed Balance |
|----------------|------------------------|--------------------------|------------------------|------------------------|----------------------|---------------------|--------------------------------|
| HSIP | \$78,125 | \$70,313 | \$7,813 | \$0 | \$0 | \$78,125 | \$0 |
| HSIP-R | \$350 | \$315 | \$35 | \$0 | \$0 | \$350 | \$0 |
| NHPP | \$8,000,000 | \$6,400,000 | \$1,600,000 | \$0 | \$0 | \$8,000,000 | \$0 |
| STBG (State) | \$2,475,000 | \$1,980,000 | \$495,000 | \$0 | \$0 | \$2,475,000 | \$0 |
| STBG (Local)* | \$1,150,000 | \$280,000 | \$0 | \$870,000 | \$7,423,794 | \$1,543,424 | \$8,967,218 |
| O & M (Local) | \$17,735,600 | \$0 | \$0 | \$17,735,600 | \$0 | \$17,735,600 | \$0 |
| Totals: | \$29,439,075 | \$8,730,628 | \$2,102,848 | \$18,605,600 | \$7,423,794 | \$29,832,499 | \$8,967,218 |

*The State Funds column for this line item refers to projects that may include the State's participation requiring the use of STBG funds

Tennessee Highway Totals for FY22

| Funding Source | Total Programmed Funds | Programmed Federal Funds | Programmed State Funds | Programmed Local Funds | Surplus / Deficit ** | Anticipated Revenue | Available Unprogrammed Balance |
|---------------------|------------------------|--------------------------|------------------------|------------------------|----------------------|---------------------|--------------------------------|
| ACSTBG | \$6,802,000 | \$0 | \$6,802,000 | \$0 | \$0 | \$6,802,000 | \$0 |
| HSIP | \$46,875 | \$42,188 | \$4,688 | \$0 | \$0 | \$46,875 | \$0 |
| HSIP-R | \$150 | \$135 | \$15 | \$0 | \$0 | \$150 | \$0 |
| NHPP | \$5,060,000 | \$4,054,000 | \$1,006,000 | \$0 | \$0 | \$5,060,000 | \$0 |
| STBG (State) | \$3,500,000 | \$2,800,000 | \$700,000 | \$0 | \$0 | \$3,500,000 | 0 |
| STBG (Local)* | \$10,723,388 | \$8,578,710 | \$0 | \$2,144,678 | \$388,508 | \$1,553,905 | \$1,942,413 |
| CRRSAA-HIP | \$611,612 | \$611,612 | \$0 | \$0 | \$0 | \$611,612 | \$0 |
| O & M (Local) | \$17,912,956 | \$0 | \$0 | \$17,912,956 | \$0 | \$17,912,956 | \$0 |
| Totals: | \$44,656,981 | \$16,086,645 | \$8,512,703 | \$20,057,634 | \$388,508 | \$35,487,498 | \$1,942,413 |

*The State Funds column for this line item refers to projects that may include the State's participation requiring the use of STBG funds

Tennessee Highway Totals for FY23

| Funding Source | Total Programmed Funds | Programmed Federal Funds | Programmed State Funds | Programmed Local Funds | Surplus / Deficit ** | Anticipated Revenue | Available Unprogrammed Balance |
|----------------|------------------------|--------------------------|------------------------|------------------------|----------------------|---------------------|--------------------------------|
| HSIP | \$31,250 | \$28,125 | \$3,125 | \$0 | \$0 | \$31,250 | \$0 |
| HSIP-R | \$75 | \$68 | \$8 | \$0 | \$0 | \$75 | \$0 |
| NHPP | \$8,805,000 | \$7,914,000 | \$891,000 | \$0 | \$0 | \$8,805,000 | \$0 |
| STBG (State) | \$37,500 | \$30,000 | \$7,500 | \$0 | \$0 | \$37,500 | \$0 |
| STBG (Local)* | \$2,500,000 | \$2,000,000 | \$0 | \$500,000 | -\$57,587 | \$1,553,905 | \$1,496,318 |
| O & M (Local) | \$18,092,085 | \$0 | \$0 | \$18,092,085 | \$0 | \$18,092,085 | \$0 |
| LOCAL | \$3,000,000 | \$0 | \$0 | \$3,000,000 | \$0 | \$3,000,000 | \$0 |
| Totals: | \$29,465,910 | \$9,972,193 | \$901,633 | \$18,592,085 | -\$57,587 | \$31,519,815 | \$1,496,318 |

*The State Funds column for this line item refers to projects that may include the State's participation requiring the use of STBG funds

** surplus or deficit represents the MTPO's objective to maintain fiscal constraint for projects and funding designated within the Kingsport MTPO area