



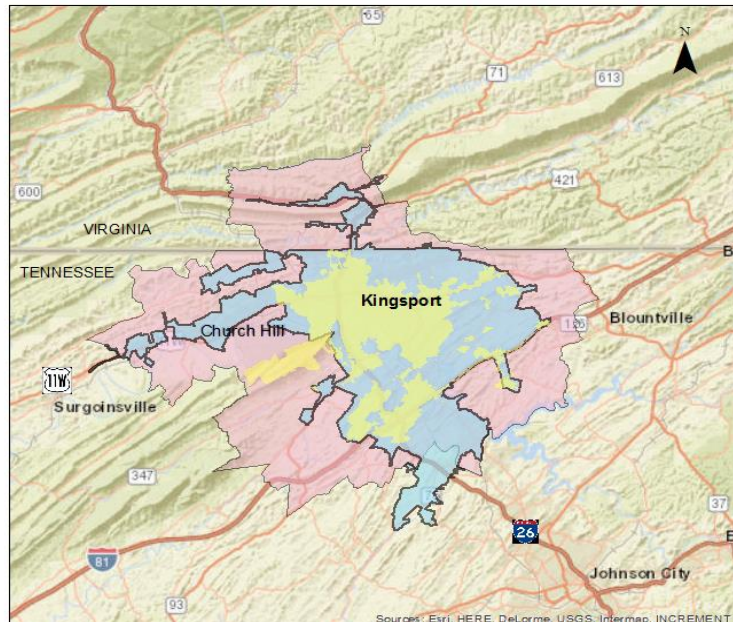
TIP #	TN-2019-008	TDOT PIN / VA UPC	126819.00	Priority		Lead Agency	TDOT
STIP #	2082115						
County	Sullivan, Hawkins	Length		LRTP#	Page # 6-3	Conformity Status	NA
Route/Project Name	Surface Transportation Block Grant (STBG) Grouping					Total Project Cost	\$3,912,500
Termini or Intersection	Kingsport MTPO - Sullivan County and Hawkins County						
Project Description	See TIP grouping description for a comprehensive listing of activities included but not limited for eligibility						

Fiscal Year	Phase	Funding Type	Total Funds	Fed Funds	State Funds	Local Funds
FY20	PE, ROW, CONST	STBG	\$3,750,000	\$3,000,000	\$750,000	\$0
FY21	PE, ROW, CONST	STBG	\$75,000	\$60,000	\$15,000	\$0
FY22	PE, ROW, CONST	STBG	\$50,000	\$40,000	\$10,000	\$0
FY23	PE, ROW, CONST	STBG	\$37,500	\$30,000	\$7,500	\$0

Remarks	Amendment #		Admin Modification #	4
TDOT Modification #81 - Add \$750,000 STBG funds to FY20 for PE, ROW, CONST				

Legend

- Kingsport City Limits
- Kingsport UZA 2010
- Kingsport MTPO Planning Area





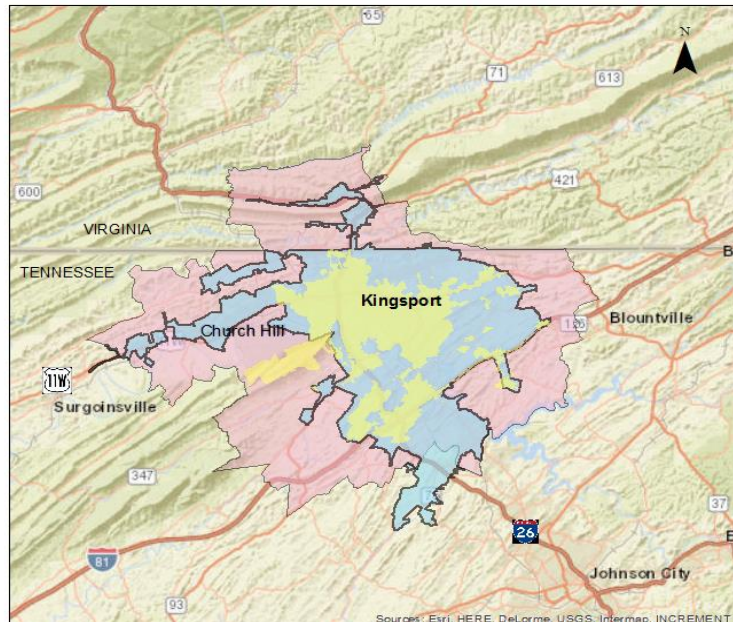
TIP #	TN-2019-008	TDOT PIN / VA UPC	126819.00	Priority		Lead Agency	TDOT
STIP #	2082115						
County	Sullivan, Hawkins	Length		LRTP#	Page # 6-3	Conformity Status	NA
Route/Project Name	Surface Transportation Block Grant (STBG) Grouping					Total Project Cost	\$5,862,500
Termini or Intersection	Kingsport MTPO - Sullivan County and Hawkins County						
Project Description	See TIP grouping description for a comprehensive listing of activities included but not limited for eligibility						

Fiscal Year	Phase	Funding Type	Total Funds	Fed Funds	State Funds	Local Funds
FY20	PE, ROW, CONST	STBG	\$3,750,000	\$3,000,000	\$750,000	\$0
FY21	PE, ROW, CONST	STBG	\$75,000	\$60,000	\$15,000	\$0
FY22	PE, ROW, CONST	STBG	\$2,000,000	\$1,600,000	\$400,000	\$0
FY23	PE, ROW, CONST	STBG	\$37,500	\$30,000	\$7,500	\$0

Remarks	Amendment #		Admin Modification #	16
TDOT Modification #461 - Add \$1,950,000 STBG funds to FY22				

Legend

- Kingsport City Limits
- Kingsport UZA 2010
- Kingsport MTPO Planning Area



Beg. Balance STBG (local): \$8,830,089

Kingsport MTPO FY 2020 - 2023 TIP Highway Funding Summary

Tennessee Highway Totals for FY20

Funding Source	Total Programmed Funds	Programmed Federal Funds	Programmed State Funds	Programmed Local Funds	Surplus / Deficit **	Anticipated Revenue	Available Unprogrammed Balance
HSIP	\$400,000	\$360,000	\$40,000	\$0	\$0	\$400,000	\$0
HSIP-R	\$425	\$383	\$43	\$0	\$0	\$425	\$0
NHPP	\$445,000	\$376,000	\$69,000	\$0	\$0	\$445,000	\$0
R-STBG (State)	\$131,500	\$105,200	\$26,300	\$0	\$0	\$131,500	\$0
STBG (State)	\$12,150,000	\$9,720,000	\$2,430,000	\$0	\$0	\$12,150,000	\$0
STBG (Local)*	\$3,329,000	\$2,680,200	\$80,000	\$568,800	\$6,149,889	\$1,553,905	\$7,703,794
O & M (Local)	\$17,560,000	\$0	\$0	\$17,560,000	\$0	\$17,560,000	0
Totals:	\$34,015,925	\$13,241,783	\$2,645,343	\$18,128,800	\$0	\$32,240,830	\$7,703,794

*The State Funds column for this line item refers to projects that may include the State's participation requiring the use of STBG funds

Tennessee Highway Totals for FY21

Funding Source	Total Programmed Funds	Programmed Federal Funds	Programmed State Funds	Programmed Local Funds	Surplus / Deficit **	Anticipated Revenue	Available Unprogrammed Balance
HSIP	\$78,125	\$70,313	\$7,813	\$0	\$0	\$78,125	\$0
HSIP-R	\$350	\$315	\$35	\$0	\$0	\$350	\$0
NHPP	\$8,000,000	\$6,400,000	\$1,600,000	\$0	\$0	\$8,000,000	\$0
STBG (State)	\$2,475,000	\$1,980,000	\$495,000	\$0	\$0	\$2,475,000	\$0
STBG (Local)*	\$1,150,000	\$280,000	\$0	\$870,000	\$7,423,794	\$1,543,424	\$8,967,218
O & M (Local)	\$17,735,600	\$0	\$0	\$17,735,600	\$0	\$17,735,600	\$0
Totals:	\$29,439,075	\$8,730,628	\$2,102,848	\$18,605,600	\$7,423,794	\$29,832,499	\$8,967,218

*The State Funds column for this line item refers to projects that may include the State's participation requiring the use of STBG funds

Tennessee Highway Totals for FY22

Funding Source	Total Programmed Funds	Programmed Federal Funds	Programmed State Funds	Programmed Local Funds	Surplus / Deficit **	Anticipated Revenue	Available Unprogrammed Balance
ACSTBG	\$4,300,000	\$0	\$4,300,000	\$0	\$0	\$4,300,000	\$0
HSIP	\$46,875	\$42,188	\$4,688	\$0	\$0	\$46,875	\$0
HSIP-R	\$150	\$135	\$15	\$0	\$0	\$150	\$0
NHPP	\$5,000,000	\$4,000,000	\$1,000,000	\$0	\$0	\$5,000,000	\$0
STBG (State)	\$50,000	\$40,000	\$10,000	\$0	\$0	\$50,000	0
STBG (Local)*	\$8,973,388	\$7,178,710	\$0	\$1,794,678	\$1,788,508	\$1,553,905	\$3,342,413
CRRSAA-HIP	\$611,612	\$611,612	\$0	\$0	\$0	\$611,612	\$0
O & M (Local)	\$17,912,956	\$0	\$0	\$17,912,956	\$0	\$17,912,956	\$0
Totals:	\$36,894,981	\$11,872,645	\$5,314,703	\$19,707,634	\$1,788,508	\$29,475,498	\$3,342,413

*The State Funds column for this line item refers to projects that may include the State's participation requiring the use of STBG funds

Tennessee Highway Totals for FY23

Funding Source	Total Programmed Funds	Programmed Federal Funds	Programmed State Funds	Programmed Local Funds	Surplus / Deficit **	Anticipated Revenue	Available Unprogrammed Balance
HSIP	\$31,250	\$28,125	\$3,125	\$0	\$0	\$31,250	\$0
HSIP-R	\$75	\$68	\$8	\$0	\$0	\$75	\$0
NHPP	\$2,105,000	\$1,884,000	\$221,000	\$0	\$0	\$2,105,000	\$0
STBG (State)	\$37,500	\$30,000	\$7,500	\$0	\$0	\$37,500	\$0
STBG (Local)*	\$2,500,000	\$2,000,000	\$0	\$500,000	\$1,342,413	\$1,553,905	\$2,896,318
O & M (Local)	\$18,092,085	\$0	\$0	\$18,092,085	\$0	\$18,092,085	\$0
LOCAL	\$3,000,000	\$0	\$0	\$3,000,000	\$0	\$3,000,000	\$0
Totals:	\$22,765,910	\$3,942,193	\$231,633	\$18,592,085	\$1,342,413	\$24,819,815	\$2,896,318

*The State Funds column for this line item refers to projects that may include the State's participation requiring the use of STBG funds

** surplus or deficit represents the MTPO's objective to maintain fiscal constraint for projects and funding designated within the Kingsport MTPO area

Beg. Balance STBG (local): \$8,830,089

Kingsport MTPO FY 2020 - 2023 TIP Highway Funding Summary

Tennessee Highway Totals for FY20

Funding Source	Total Programmed Funds	Programmed Federal Funds	Programmed State Funds	Programmed Local Funds	Surplus / Deficit **	Anticipated Revenue	Available Unprogrammed Balance
HSIP	\$400,000	\$360,000	\$40,000	\$0	\$0	\$400,000	\$0
HSIP-R	\$425	\$383	\$43	\$0	\$0	\$425	\$0
NHPP	\$445,000	\$376,000	\$69,000	\$0	\$0	\$445,000	\$0
R-STBG (State)	\$131,500	\$105,200	\$26,300	\$0	\$0	\$131,500	\$0
STBG (State)	\$12,150,000	\$9,720,000	\$2,430,000	\$0	\$0	\$12,150,000	\$0
STBG (Local)*	\$3,329,000	\$2,680,200	\$80,000	\$568,800	\$6,149,889	\$1,553,905	\$7,703,794
O & M (Local)	\$17,560,000	\$0	\$0	\$17,560,000	\$0	\$17,560,000	0
Totals:	\$34,015,925	\$13,241,783	\$2,645,343	\$18,128,800	\$0	\$32,240,830	\$7,703,794

*The State Funds column for this line item refers to projects that may include the State's participation requiring the use of STBG funds

Tennessee Highway Totals for FY21

Funding Source	Total Programmed Funds	Programmed Federal Funds	Programmed State Funds	Programmed Local Funds	Surplus / Deficit **	Anticipated Revenue	Available Unprogrammed Balance
HSIP	\$78,125	\$70,313	\$7,813	\$0	\$0	\$78,125	\$0
HSIP-R	\$350	\$315	\$35	\$0	\$0	\$350	\$0
NHPP	\$8,000,000	\$6,400,000	\$1,600,000	\$0	\$0	\$8,000,000	\$0
STBG (State)	\$2,475,000	\$1,980,000	\$495,000	\$0	\$0	\$2,475,000	\$0
STBG (Local)*	\$1,150,000	\$280,000	\$0	\$870,000	\$7,423,794	\$1,543,424	\$8,967,218
O & M (Local)	\$17,735,600	\$0	\$0	\$17,735,600	\$0	\$17,735,600	\$0
Totals:	\$29,439,075	\$8,730,628	\$2,102,848	\$18,605,600	\$7,423,794	\$29,832,499	\$8,967,218

*The State Funds column for this line item refers to projects that may include the State's participation requiring the use of STBG funds

Tennessee Highway Totals for FY22

Funding Source	Total Programmed Funds	Programmed Federal Funds	Programmed State Funds	Programmed Local Funds	Surplus / Deficit **	Anticipated Revenue	Available Unprogrammed Balance
ACSTBG	\$4,300,000	\$0	\$4,300,000	\$0	\$0	\$4,300,000	\$0
HSIP	\$46,875	\$42,188	\$4,688	\$0	\$0	\$46,875	\$0
HSIP-R	\$150	\$135	\$15	\$0	\$0	\$150	\$0
NHPP	\$5,000,000	\$4,000,000	\$1,000,000	\$0	\$0	\$5,000,000	\$0
STBG (State)	\$2,000,000	\$1,600,000	\$400,000	\$0	\$0	\$2,000,000	0
STBG (Local)*	\$8,973,388	\$7,178,710	\$0	\$1,794,678	\$1,788,508	\$1,553,905	\$3,342,413
CRRSAA-HIP	\$611,612	\$611,612	\$0	\$0	\$0	\$611,612	\$0
O & M (Local)	\$17,912,956	\$0	\$0	\$17,912,956	\$0	\$17,912,956	\$0
Totals:	\$38,844,981	\$13,432,645	\$5,704,703	\$19,707,634	\$1,788,508	\$31,425,498	\$3,342,413

*The State Funds column for this line item refers to projects that may include the State's participation requiring the use of STBG funds

Tennessee Highway Totals for FY23

Funding Source	Total Programmed Funds	Programmed Federal Funds	Programmed State Funds	Programmed Local Funds	Surplus / Deficit **	Anticipated Revenue	Available Unprogrammed Balance
HSIP	\$31,250	\$28,125	\$3,125	\$0	\$0	\$31,250	\$0
HSIP-R	\$75	\$68	\$8	\$0	\$0	\$75	\$0
NHPP	\$2,105,000	\$1,884,000	\$221,000	\$0	\$0	\$2,105,000	\$0
STBG (State)	\$37,500	\$30,000	\$7,500	\$0	\$0	\$37,500	\$0
STBG (Local)*	\$2,500,000	\$2,000,000	\$0	\$500,000	\$1,342,413	\$1,553,905	\$2,896,318
O & M (Local)	\$18,092,085	\$0	\$0	\$18,092,085	\$0	\$18,092,085	\$0
LOCAL	\$3,000,000	\$0	\$0	\$3,000,000	\$0	\$3,000,000	\$0
Totals:	\$22,765,910	\$3,942,193	\$231,633	\$18,592,085	\$1,342,413	\$24,819,815	\$2,896,318

*The State Funds column for this line item refers to projects that may include the State's participation requiring the use of STBG funds

** surplus or deficit represents the MTPO's objective to maintain fiscal constraint for projects and funding designated within the Kingsport MTPO area