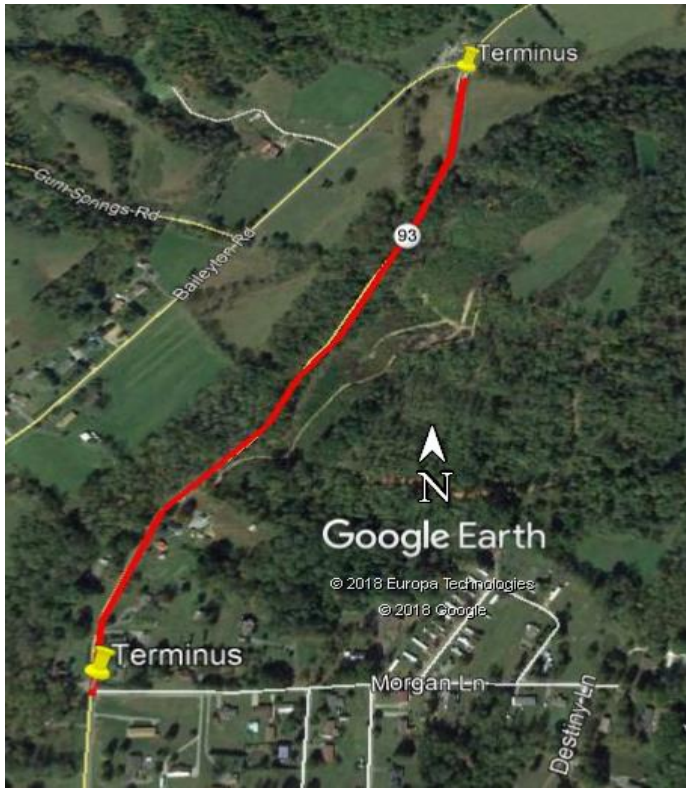




TIP #	TN-2011-010b	TDOT PIN / VA UPC	112834.02	Priority		Lead Agency	TDOT
STIP #	2090135						
County	Washington, Sullivan	Length	0.54 mile	LRTP#	Page #4-5	Conformity Status	NA
Route/Project Name	SR-93					Total Project Cost	\$5,563,500
Termini or Intersection	(Sullivan Gardens Parkway) from Near Morgan Lane in Washington County to South of Baileyton Road in Sullivan County (TPR Option 5, Spot Improvement) (IA)						
Project Description	Miscellaneous Safety Improvements - proposed realignment of SR-93 to improve sight distance, provide two 12-foot lanes and 6-foot shoulders.						

Fiscal Year	Phase	Funding Type	Total Funds	Fed Funds	State Funds	Local Funds
FY22	CONST	STBG	\$4,300,000	\$3,440,000	\$860,000	\$0

Remarks	Amendment #		Admin Modification #	14
TDOT Modification #437 - Add \$500,000 STBG funds to CONST in FY22, update project length/termini/total project cost.				

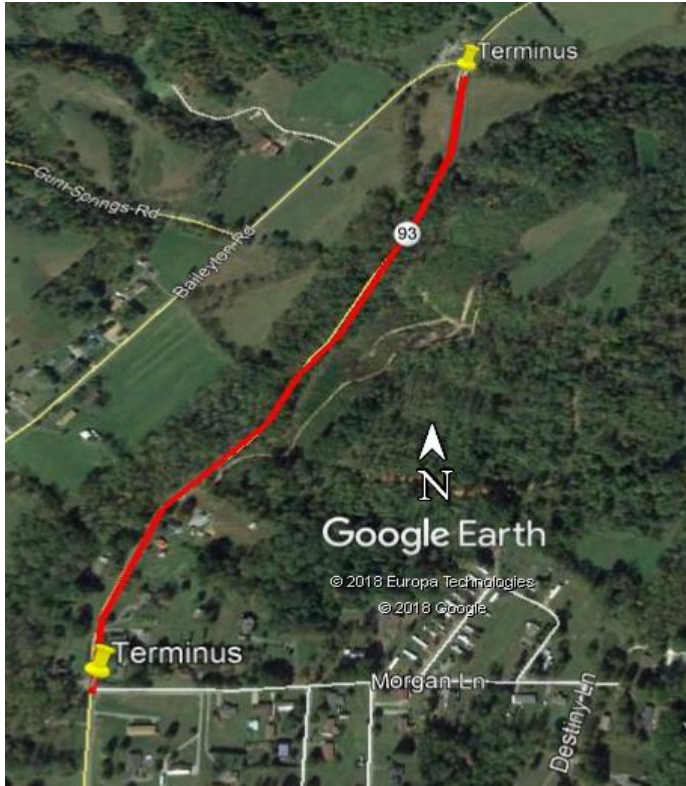




TIP #	TN-2011-010b	TDOT PIN / VA UPC	112834.02	Priority		Lead Agency	TDOT
STIP #	2090135						
County	Washington, Sullivan	Length	0.54 mile	LRTP#	Page #4-5	Conformity Status	NA
Route/Project Name	SR-93					Total Project Cost	\$5,563,500
Termini or Intersection	(Sullivan Gardens Parkway) from Near Morgan Lane in Washington County to South of Baileyton Road in Sullivan County (TPR Option 5, Spot Improvement) (IA)						
Project Description	Miscellaneous Safety Improvements - proposed realignment of SR-93 to improve sight distance, provide two 12-foot lanes and 6-foot shoulders.						

Fiscal Year	Phase	Funding Type	Total Funds	Fed Funds	State Funds	Local Funds
FY22	CONST	ACSTBG	\$4,300,000	\$0	\$4,300,000	\$0

Remarks	Amendment #		Admin Modification #	15
TDOT Modification #442 - Change STBG funds to ACSTBG funds				



Beg. Balance STBG (local): \$8,830,089

Kingsport MTPO FY 2020 - 2023 TIP Highway Funding Summary

Tennessee Highway Totals for FY20

Funding Source	Total Programmed Funds	Programmed Federal Funds	Programmed State Funds	Programmed Local Funds	Surplus / Deficit **	Anticipated Revenue	Available Unprogrammed Balance
HSIP	\$400,000	\$360,000	\$40,000	\$0	\$0	\$400,000	\$0
HSIP-R	\$425	\$383	\$43	\$0	\$0	\$425	\$0
NHPP	\$445,000	\$376,000	\$69,000	\$0	\$0	\$445,000	\$0
R-STBG (State)	\$131,500	\$105,200	\$26,300	\$0	\$0	\$131,500	\$0
STBG (State)	\$12,150,000	\$9,720,000	\$2,430,000	\$0	\$0	\$12,150,000	\$0
STBG (Local)*	\$3,329,000	\$2,680,200	\$80,000	\$568,800	\$6,149,889	\$1,553,905	\$7,703,794
O & M (Local)	\$17,560,000	\$0	\$0	\$17,560,000	\$0	\$17,560,000	\$0
Totals:	\$34,015,925	\$13,241,783	\$2,645,343	\$18,128,800	\$0	\$32,240,830	\$7,703,794

*The State Funds column for this line item refers to projects that may include the State's participation requiring the use of STBG funds

Tennessee Highway Totals for FY21

Funding Source	Total Programmed Funds	Programmed Federal Funds	Programmed State Funds	Programmed Local Funds	Surplus / Deficit **	Anticipated Revenue	Available Unprogrammed Balance
HSIP	\$78,125	\$70,313	\$7,813	\$0	\$0	\$78,125	\$0
HSIP-R	\$350	\$315	\$35	\$0	\$0	\$350	\$0
NHPP	\$8,000,000	\$6,400,000	\$1,600,000	\$0	\$0	\$8,000,000	\$0
STBG (State)	\$2,475,000	\$1,980,000	\$495,000	\$0	\$0	\$2,475,000	\$0
STBG (Local)*	\$1,150,000	\$280,000	\$0	\$870,000	\$7,423,794	\$1,543,424	\$8,967,218
O & M (Local)	\$17,735,600	\$0	\$0	\$17,735,600	\$0	\$17,735,600	\$0
Totals:	\$29,439,075	\$8,730,628	\$2,102,848	\$18,605,600	\$7,423,794	\$29,832,499	\$8,967,218

*The State Funds column for this line item refers to projects that may include the State's participation requiring the use of STBG funds

Tennessee Highway Totals for FY22

Funding Source	Total Programmed Funds	Programmed Federal Funds	Programmed State Funds	Programmed Local Funds	Surplus / Deficit **	Anticipated Revenue	Available Unprogrammed Balance
HSIP	\$46,875	\$42,188	\$4,688	\$0	\$0	\$46,875	\$0
HSIP-R	\$150	\$135	\$15	\$0	\$0	\$150	\$0
NHPP	\$5,000,000	\$4,000,000	\$1,000,000	\$0	\$0	\$5,000,000	\$0
STBG (State)	\$4,350,000	\$3,480,000	\$870,000	\$0	\$0	\$4,350,000	\$0
STBG (Local)*	\$8,973,388	\$7,178,710	\$0	\$1,794,678	\$1,788,508	\$1,553,905	\$3,342,413
CRRSAA-HIP	\$611,612	\$611,612	\$0	\$0	\$0	\$611,612	\$0
O & M (Local)	\$17,912,956	\$0	\$0	\$17,912,956	\$0	\$17,912,956	\$0
Totals:	\$36,894,981	\$15,312,645	\$1,874,703	\$19,707,634	\$1,788,508	\$29,475,498	\$3,342,413

*The State Funds column for this line item refers to projects that may include the State's participation requiring the use of STBG funds

Tennessee Highway Totals for FY23

Funding Source	Total Programmed Funds	Programmed Federal Funds	Programmed State Funds	Programmed Local Funds	Surplus / Deficit **	Anticipated Revenue	Available Unprogrammed Balance
HSIP	\$31,250	\$28,125	\$3,125	\$0	\$0	\$31,250	\$0
HSIP-R	\$75	\$68	\$8	\$0	\$0	\$75	\$0
NHPP	\$2,105,000	\$1,884,000	\$221,000	\$0	\$0	\$2,105,000	\$0
STBG (State)	\$37,500	\$30,000	\$7,500	\$0	\$0	\$37,500	\$0
STBG (Local)*	\$2,500,000	\$2,000,000	\$0	\$500,000	\$1,342,413	\$1,553,905	\$2,896,318
O & M (Local)	\$18,092,085	\$0	\$0	\$18,092,085	\$0	\$18,092,085	\$0
LOCAL	\$3,000,000	\$0	\$0	\$3,000,000	\$0	\$3,000,000	\$0
Totals:	\$22,765,910	\$3,942,193	\$231,633	\$18,592,085	\$1,342,413	\$24,819,815	\$2,896,318

*The State Funds column for this line item refers to projects that may include the State's participation requiring the use of STBG funds

** surplus or deficit represents the MTPO's objective to maintain fiscal constraint for projects and funding designated within the Kingsport MTPO area

Beg. Balance STBG (local): \$8,830,089

Kingsport MTPO FY 2020 - 2023 TIP Highway Funding Summary

Tennessee Highway Totals for FY20

Funding Source	Total Programmed Funds	Programmed Federal Funds	Programmed State Funds	Programmed Local Funds	Surplus / Deficit **	Anticipated Revenue	Available Unprogrammed Balance
HSIP	\$400,000	\$360,000	\$40,000	\$0	\$0	\$400,000	\$0
HSIP-R	\$425	\$383	\$43	\$0	\$0	\$425	\$0
NHPP	\$445,000	\$376,000	\$69,000	\$0	\$0	\$445,000	\$0
R-STBG (State)	\$131,500	\$105,200	\$26,300	\$0	\$0	\$131,500	\$0
STBG (State)	\$12,150,000	\$9,720,000	\$2,430,000	\$0	\$0	\$12,150,000	\$0
STBG (Local)*	\$3,329,000	\$2,680,200	\$80,000	\$568,800	\$6,149,889	\$1,553,905	\$7,703,794
O & M (Local)	\$17,560,000	\$0	\$0	\$17,560,000	\$0	\$17,560,000	0
Totals:	\$34,015,925	\$13,241,783	\$2,645,343	\$18,128,800	\$0	\$32,240,830	\$7,703,794

*The State Funds column for this line item refers to projects that may include the State's participation requiring the use of STBG funds

Tennessee Highway Totals for FY21

Funding Source	Total Programmed Funds	Programmed Federal Funds	Programmed State Funds	Programmed Local Funds	Surplus / Deficit **	Anticipated Revenue	Available Unprogrammed Balance
HSIP	\$78,125	\$70,313	\$7,813	\$0	\$0	\$78,125	\$0
HSIP-R	\$350	\$315	\$35	\$0	\$0	\$350	\$0
NHPP	\$8,000,000	\$6,400,000	\$1,600,000	\$0	\$0	\$8,000,000	\$0
STBG (State)	\$2,475,000	\$1,980,000	\$495,000	\$0	\$0	\$2,475,000	\$0
STBG (Local)*	\$1,150,000	\$280,000	\$0	\$870,000	\$7,423,794	\$1,543,424	\$8,967,218
O & M (Local)	\$17,735,600	\$0	\$0	\$17,735,600	\$0	\$17,735,600	\$0
Totals:	\$29,439,075	\$8,730,628	\$2,102,848	\$18,605,600	\$7,423,794	\$29,832,499	\$8,967,218

*The State Funds column for this line item refers to projects that may include the State's participation requiring the use of STBG funds

Tennessee Highway Totals for FY22

Funding Source	Total Programmed Funds	Programmed Federal Funds	Programmed State Funds	Programmed Local Funds	Surplus / Deficit **	Anticipated Revenue	Available Unprogrammed Balance
ACSTBG	\$4,300,000	\$0	\$4,300,000	\$0	\$0	\$4,300,000	\$0
HSIP	\$46,875	\$42,188	\$4,688	\$0	\$0	\$46,875	\$0
HSIP-R	\$150	\$135	\$15	\$0	\$0	\$150	\$0
NHPP	\$5,000,000	\$4,000,000	\$1,000,000	\$0	\$0	\$5,000,000	\$0
STBG (State)	\$50,000	\$40,000	\$10,000	\$0	\$0	\$50,000	0
STBG (Local)*	\$8,973,388	\$7,178,710	\$0	\$1,794,678	\$1,788,508	\$1,553,905	\$3,342,413
CRRSAA-HIP	\$611,612	\$611,612	\$0	\$0	\$0	\$611,612	\$0
O & M (Local)	\$17,912,956	\$0	\$0	\$17,912,956	\$0	\$17,912,956	\$0
Totals:	\$36,894,981	\$11,872,645	\$5,314,703	\$19,707,634	\$1,788,508	\$29,475,498	\$3,342,413

*The State Funds column for this line item refers to projects that may include the State's participation requiring the use of STBG funds

Tennessee Highway Totals for FY23

Funding Source	Total Programmed Funds	Programmed Federal Funds	Programmed State Funds	Programmed Local Funds	Surplus / Deficit **	Anticipated Revenue	Available Unprogrammed Balance
HSIP	\$31,250	\$28,125	\$3,125	\$0	\$0	\$31,250	\$0
HSIP-R	\$75	\$68	\$8	\$0	\$0	\$75	\$0
NHPP	\$2,105,000	\$1,884,000	\$221,000	\$0	\$0	\$2,105,000	\$0
STBG (State)	\$37,500	\$30,000	\$7,500	\$0	\$0	\$37,500	\$0
STBG (Local)*	\$2,500,000	\$2,000,000	\$0	\$500,000	\$1,342,413	\$1,553,905	\$2,896,318
O & M (Local)	\$18,092,085	\$0	\$0	\$18,092,085	\$0	\$18,092,085	\$0
LOCAL	\$3,000,000	\$0	\$0	\$3,000,000	\$0	\$3,000,000	\$0
Totals:	\$22,765,910	\$3,942,193	\$231,633	\$18,592,085	\$1,342,413	\$24,819,815	\$2,896,318

*The State Funds column for this line item refers to projects that may include the State's participation requiring the use of STBG funds

** surplus or deficit represents the MTPO's objective to maintain fiscal constraint for projects and funding designated within the Kingsport MTPO area