



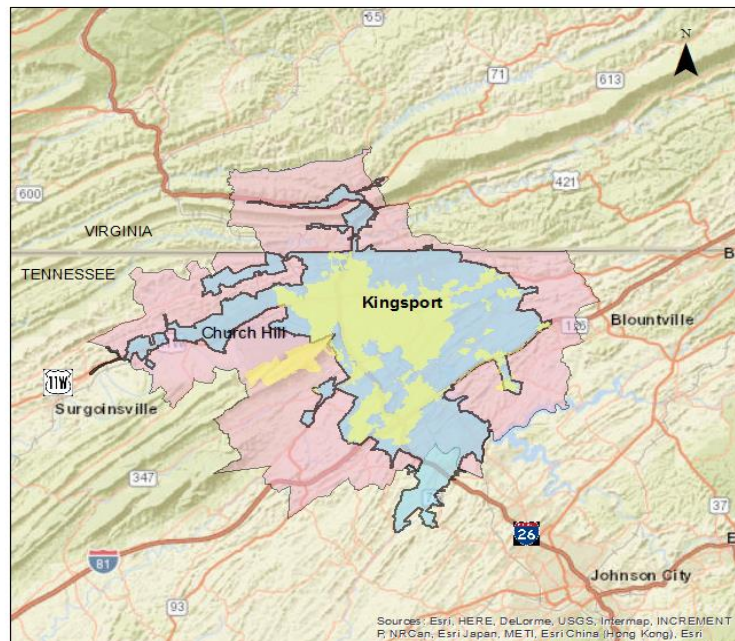
TIP #	TN-2019-006	TDOT PIN / VA UPC	126818.00	Priority		Lead Agency	TDOT
STIP #	2082110						
County	Sullivan, Hawkins	Length		LRTP#	Page # 6-2	Conformity Status	NA
Route/Project Name	National Highway Performance Program (NHPP) Grouping					Total Project Cost	\$4,990,000
Termini or Intersection	Kingsport MTPO - Sullivan County and Hawkins County						
Project Description	See TIP grouping description for a comprehensive listing of activities included but not limited for eligibility						

Fiscal Year	Phase	Funding Type	Total Funds	Fed Funds	State Funds	Local Funds
FY20	PE, ROW, CONST	NHPP	\$245,000	\$196,000	\$49,000	\$0
FY21	PE, ROW, CONST	NHPP	\$4,500,000	\$3,600,000	\$900,000	\$0
FY22	PE, ROW, CONST	NHPP	\$140,000	\$112,000	\$28,000	\$0
FY23	PE, ROW, CONST	NHPP	\$105,000	\$84,000	\$21,000	\$0

Remarks	Amendment #		Admin Modification #	8
TDOT Modification #245 - Add \$4,290,000 NHPP funds to FY21				

**Legend**

- Kingsport City Limits
- Kingsport UZA 2010
- Kingsport MTPO Planning Area



Sources: Esri, HERE, DeLorme, USGS, Intermap, INCREMENT P, NRCan, Esri Japan, METI, Esri China (Hong Kong), Esri



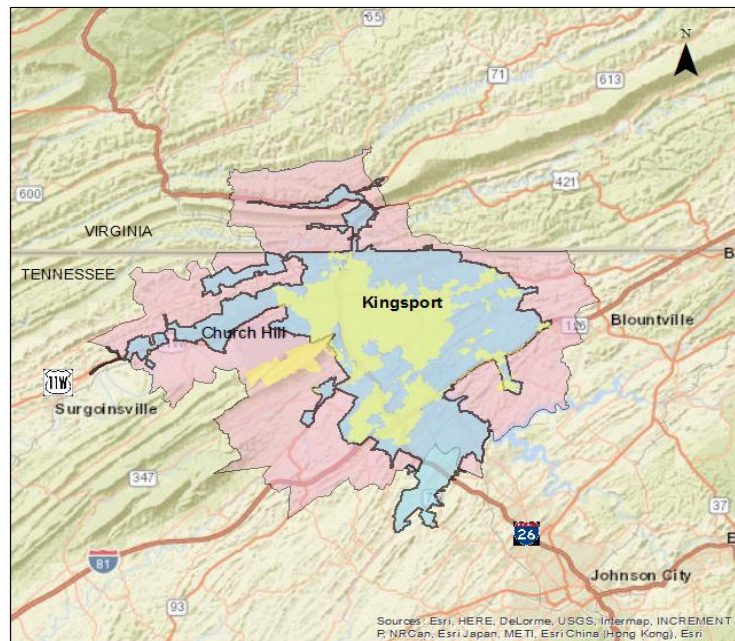
TIP #	TN-2019-006	TDOT PIN / VA UPC	126818.00	Priority		Lead Agency	TDOT
STIP #	2082110						
County	Sullivan, Hawkins	Length		LRTP#	Page # 6-2	Conformity Status	NA
Route/Project Name	National Highway Performance Program (NHPP) Grouping					Total Project Cost	\$8,490,000
Termini or Intersection	Kingsport MTPO - Sullivan County and Hawkins County						
Project Description	See TIP grouping description for a comprehensive listing of activities included but not limited for eligibility						

Fiscal Year	Phase	Funding Type	Total Funds	Fed Funds	State Funds	Local Funds
FY20	PE, ROW, CONST	NHPP	\$245,000	\$196,000	\$49,000	\$0
FY21	PE, ROW, CONST	NHPP	\$8,000,000	\$6,400,000	\$1,600,000	\$0
FY22	PE, ROW, CONST	NHPP	\$140,000	\$112,000	\$28,000	\$0
FY23	PE, ROW, CONST	NHPP	\$105,000	\$84,000	\$21,000	\$0

Remarks	Amendment #		Admin Modification #	9
TDOT Modification #272 - Add \$3,500,000 NHPP funds to FY21				

**Legend**

- Kingsport City Limits
- Kingsport UZA 2010
- Kingsport MTPO Planning Area



Beg. Balance STBG (local): \$8,830,089

**Kingsport MTPO FY 2020 - 2023 TIP Highway Funding Summary**

**Tennessee Highway Totals for FY20**

Funding Source	Total Programmed Funds	Programmed Federal Funds	Programmed State Funds	Programmed Local Funds	Surplus / Deficit **	Anticipated Revenue	Available Unprogrammed Balance
HSIP	\$400,000	\$360,000	\$40,000	\$0	\$0	\$400,000	\$0
HSIP-R	\$425	\$383	\$43	\$0	\$0	\$425	\$0
NHPP	\$445,000	\$376,000	\$69,000	\$0	\$0	\$445,000	\$0
R-STBG (State)	\$131,500	\$105,200	\$26,300	\$0	\$0	\$131,500	\$0
STBG (State)	\$12,150,000	\$9,720,000	\$2,430,000	\$0	\$0	\$12,150,000	\$0
<b>STBG (Local)*</b>	<b>\$8,796,830</b>	<b>\$7,054,464</b>	<b>\$80,000</b>	<b>\$1,662,366</b>	<b>\$1,775,625</b>	<b>\$1,553,905</b>	<b>\$3,329,530</b>
O & M (Local)	\$17,560,000	\$0	\$0	\$17,560,000	\$0	\$17,560,000	\$0
<b>Totals:</b>	<b>\$39,483,755</b>	<b>\$17,616,047</b>	<b>\$2,645,343</b>	<b>\$19,222,366</b>	<b>\$0</b>	<b>\$32,240,830</b>	<b>\$3,329,530</b>

\*The State Funds column for this line item refers to projects that may include the State's participation requiring the use of STBG funds

**Tennessee Highway Totals for FY21**

Funding Source	Total Programmed Funds	Programmed Federal Funds	Programmed State Funds	Programmed Local Funds	Surplus / Deficit **	Anticipated Revenue	Available Unprogrammed Balance
HSIP	\$78,125	\$70,313	\$7,813	\$0	\$0	\$78,125	\$0
HSIP-R	\$350	\$315	\$35	\$0	\$0	\$350	\$0
NHPP	\$4,500,000	\$3,600,000	\$900,000	\$0	\$0	\$4,500,000	\$0
STBG (State)	\$2,475,000	\$1,980,000	\$495,000	\$0	\$0	\$2,475,000	\$0
<b>STBG (Local)*</b>	<b>\$1,750,000</b>	<b>\$760,000</b>	<b>\$0</b>	<b>\$990,000</b>	<b>\$2,569,530</b>	<b>\$1,553,905</b>	<b>\$4,123,435</b>
O & M (Local)	\$17,735,600	\$0	\$0	\$17,735,600	\$0	\$17,735,600	\$0
<b>Totals:</b>	<b>\$26,539,075</b>	<b>\$6,410,628</b>	<b>\$1,402,848</b>	<b>\$18,725,600</b>	<b>\$2,569,530</b>	<b>\$26,342,980</b>	<b>\$4,123,435</b>

\*The State Funds column for this line item refers to projects that may include the State's participation requiring the use of STBG funds

**Tennessee Highway Totals for FY22**

Funding Source	Total Programmed Funds	Programmed Federal Funds	Programmed State Funds	Programmed Local Funds	Surplus / Deficit **	Anticipated Revenue	Available Unprogrammed Balance
HSIP	\$46,875	\$42,188	\$4,688	\$0	\$0	\$46,875	\$0
HSIP-R	\$150	\$135	\$15	\$0	\$0	\$150	\$0
NHPP	\$140,000	\$112,000	\$28,000	\$0	\$0	\$140,000	\$0
STBG (State)	\$3,850,000	\$3,080,000	\$770,000	\$0	\$0	\$3,850,000	\$0
<b>STBG (Local)*</b>	<b>\$2,625,000</b>	<b>\$2,100,000</b>	<b>\$0</b>	<b>\$525,000</b>	<b>\$2,023,435</b>	<b>\$1,553,905</b>	<b>\$3,577,340</b>
O & M (Local)	\$17,912,956	\$0	\$0	\$17,912,956	\$0	\$17,912,956	\$0
<b>Totals:</b>	<b>\$24,574,981</b>	<b>\$5,334,323</b>	<b>\$802,703</b>	<b>\$18,437,956</b>	<b>\$2,023,435</b>	<b>\$23,503,886</b>	<b>\$3,577,340</b>

\*The State Funds column for this line item refers to projects that may include the State's participation requiring the use of STBG funds

**Tennessee Highway Totals for FY23**

Funding Source	Total Programmed Funds	Programmed Federal Funds	Programmed State Funds	Programmed Local Funds	Surplus / Deficit **	Anticipated Revenue	Available Unprogrammed Balance
HSIP	\$31,250	\$28,125	\$3,125	\$0	\$0	\$31,250	\$0
HSIP-R	\$75	\$68	\$8	\$0	\$0	\$75	\$0
NHPP	\$2,105,000	\$1,884,000	\$221,000	\$0	\$0	\$2,105,000	\$0
STBG (State)	\$37,500	\$30,000	\$7,500	\$0	\$0	\$37,500	\$0
<b>STBG (Local)*</b>					<b>\$3,577,340</b>	<b>\$1,553,905</b>	<b>\$5,131,245</b>
O & M (Local)	\$18,092,085	\$0	\$0	\$18,092,085	\$0	\$18,092,085	\$0
LOCAL	\$3,000,000	\$0	\$0	\$3,000,000	\$0	\$3,000,000	\$0
<b>Totals:</b>	<b>\$20,265,910</b>	<b>\$1,942,193</b>	<b>\$231,633</b>	<b>\$18,092,085</b>	<b>\$3,577,340</b>	<b>\$24,819,815</b>	<b>\$5,131,245</b>

\*The State Funds column for this line item refers to projects that may include the State's participation requiring the use of STBG funds

\*\* surplus or deficit represents the MTPO's objective to maintain fiscal constraint for projects and funding designated within the Kingsport MTPO area

Beg. Balance STBG (local): \$8,830,089

**Kingsport MTPO FY 2020 - 2023 TIP Highway Funding Summary**

**Tennessee Highway Totals for FY20**

Funding Source	Total Programmed Funds	Programmed Federal Funds	Programmed State Funds	Programmed Local Funds	Surplus / Deficit **	Anticipated Revenue	Available Unprogrammed Balance
HSIP	\$400,000	\$360,000	\$40,000	\$0	\$0	\$400,000	\$0
HSIP-R	\$425	\$383	\$43	\$0	\$0	\$425	\$0
NHPP	\$445,000	\$376,000	\$69,000	\$0	\$0	\$445,000	\$0
R-STBG (State)	\$131,500	\$105,200	\$26,300	\$0	\$0	\$131,500	\$0
STBG (State)	\$12,150,000	\$9,720,000	\$2,430,000	\$0	\$0	\$12,150,000	\$0
<b>STBG (Local)*</b>	<b>\$8,796,830</b>	<b>\$7,054,464</b>	<b>\$80,000</b>	<b>\$1,662,366</b>	<b>\$1,775,625</b>	<b>\$1,553,905</b>	<b>\$3,329,530</b>
O & M (Local)	\$17,560,000	\$0	\$0	\$17,560,000	\$0	\$17,560,000	\$0
<b>Totals:</b>	<b>\$39,483,755</b>	<b>\$17,616,047</b>	<b>\$2,645,343</b>	<b>\$19,222,366</b>	<b>\$0</b>	<b>\$32,240,830</b>	<b>\$3,329,530</b>

\*The State Funds column for this line item refers to projects that may include the State's participation requiring the use of STBG funds

**Tennessee Highway Totals for FY21**

Funding Source	Total Programmed Funds	Programmed Federal Funds	Programmed State Funds	Programmed Local Funds	Surplus / Deficit **	Anticipated Revenue	Available Unprogrammed Balance
HSIP	\$78,125	\$70,313	\$7,813	\$0	\$0	\$78,125	\$0
HSIP-R	\$350	\$315	\$35	\$0	\$0	\$350	\$0
NHPP	\$8,000,000	\$6,400,000	\$1,600,000	\$0	\$0	\$8,000,000	\$0
STBG (State)	\$2,475,000	\$1,980,000	\$495,000	\$0	\$0	\$2,475,000	\$0
<b>STBG (Local)*</b>	<b>\$1,750,000</b>	<b>\$760,000</b>	<b>\$0</b>	<b>\$990,000</b>	<b>\$2,569,530</b>	<b>\$1,553,905</b>	<b>\$4,123,435</b>
O & M (Local)	\$17,735,600	\$0	\$0	\$17,735,600	\$0	\$17,735,600	\$0
<b>Totals:</b>	<b>\$30,039,075</b>	<b>\$9,210,628</b>	<b>\$2,102,848</b>	<b>\$18,725,600</b>	<b>\$2,569,530</b>	<b>\$29,842,980</b>	<b>\$4,123,435</b>

\*The State Funds column for this line item refers to projects that may include the State's participation requiring the use of STBG funds

**Tennessee Highway Totals for FY22**

Funding Source	Total Programmed Funds	Programmed Federal Funds	Programmed State Funds	Programmed Local Funds	Surplus / Deficit **	Anticipated Revenue	Available Unprogrammed Balance
HSIP	\$46,875	\$42,188	\$4,688	\$0	\$0	\$46,875	\$0
HSIP-R	\$150	\$135	\$15	\$0	\$0	\$150	\$0
NHPP	\$140,000	\$112,000	\$28,000	\$0	\$0	\$140,000	\$0
STBG (State)	\$3,850,000	\$3,080,000	\$770,000	\$0	\$0	\$3,850,000	\$0
<b>STBG (Local)*</b>	<b>\$2,625,000</b>	<b>\$2,100,000</b>	<b>\$0</b>	<b>\$525,000</b>	<b>\$2,023,435</b>	<b>\$1,553,905</b>	<b>\$3,577,340</b>
O & M (Local)	\$17,912,956	\$0	\$0	\$17,912,956	\$0	\$17,912,956	\$0
<b>Totals:</b>	<b>\$24,574,981</b>	<b>\$5,334,323</b>	<b>\$802,703</b>	<b>\$18,437,956</b>	<b>\$2,023,435</b>	<b>\$23,503,886</b>	<b>\$3,577,340</b>

\*The State Funds column for this line item refers to projects that may include the State's participation requiring the use of STBG funds

**Tennessee Highway Totals for FY23**

Funding Source	Total Programmed Funds	Programmed Federal Funds	Programmed State Funds	Programmed Local Funds	Surplus / Deficit **	Anticipated Revenue	Available Unprogrammed Balance
HSIP	\$31,250	\$28,125	\$3,125	\$0	\$0	\$31,250	\$0
HSIP-R	\$75	\$68	\$8	\$0	\$0	\$75	\$0
NHPP	\$2,105,000	\$1,884,000	\$221,000	\$0	\$0	\$2,105,000	\$0
STBG (State)	\$37,500	\$30,000	\$7,500	\$0	\$0	\$37,500	\$0
<b>STBG (Local)*</b>					<b>\$3,577,340</b>	<b>\$1,553,905</b>	<b>\$5,131,245</b>
O & M (Local)	\$18,092,085	\$0	\$0	\$18,092,085	\$0	\$18,092,085	\$0
LOCAL	\$3,000,000	\$0	\$0	\$3,000,000	\$0	\$3,000,000	\$0
<b>Totals:</b>	<b>\$20,265,910</b>	<b>\$1,942,193</b>	<b>\$231,633</b>	<b>\$18,092,085</b>	<b>\$3,577,340</b>	<b>\$24,819,815</b>	<b>\$5,131,245</b>

\*The State Funds column for this line item refers to projects that may include the State's participation requiring the use of STBG funds

\*\* surplus or deficit represents the MTPO's objective to maintain fiscal constraint for projects and funding designated within the Kingsport MTPO area