



KINGSPORT MTPO

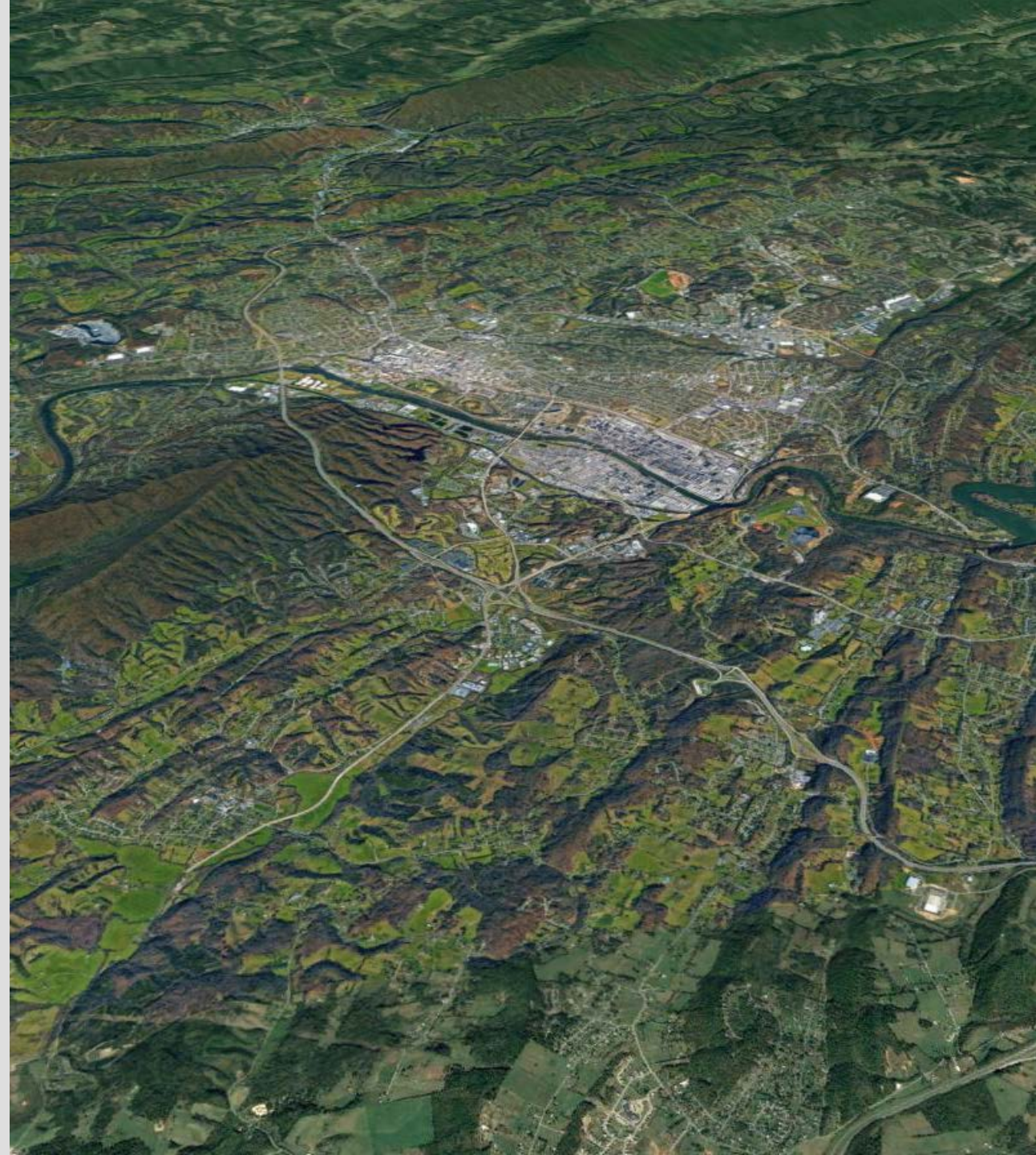
BICYCLE AND PEDESTRIAN PLAN

Progress Meeting

October 23, 2020

Today's Agenda

- Part 1 Analysis
- Bicycle and Pedestrian Counts
- Virtual Workshop Proposal
- Potential Workshop Dates
- Next Steps

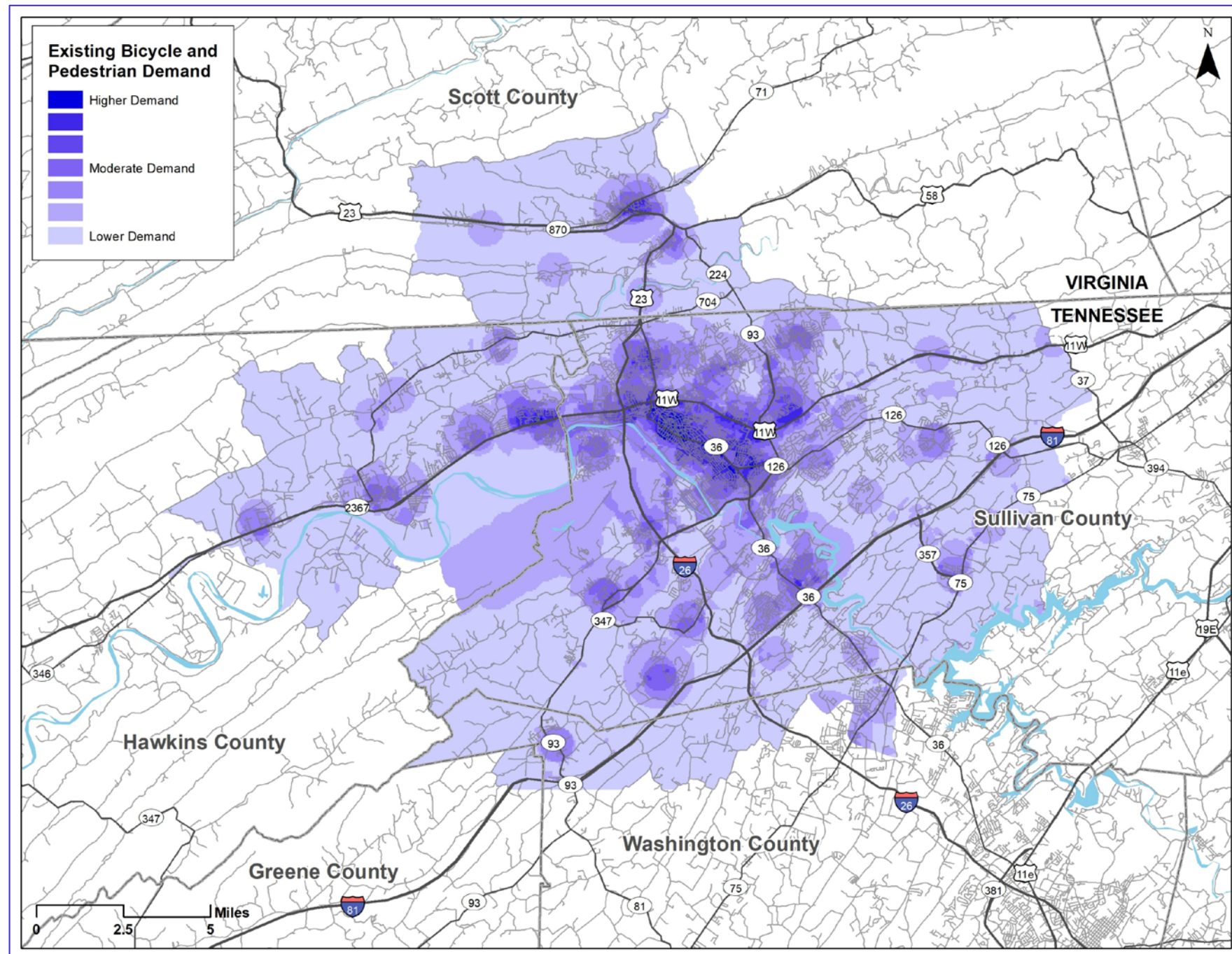


Part 1 Analysis



Existing Bicycle and Pedestrian Demand

- Population density
- Employment density
- Commercial areas
- Schools / Colleges
- Parks
- Transit Stops
- O-D Zones



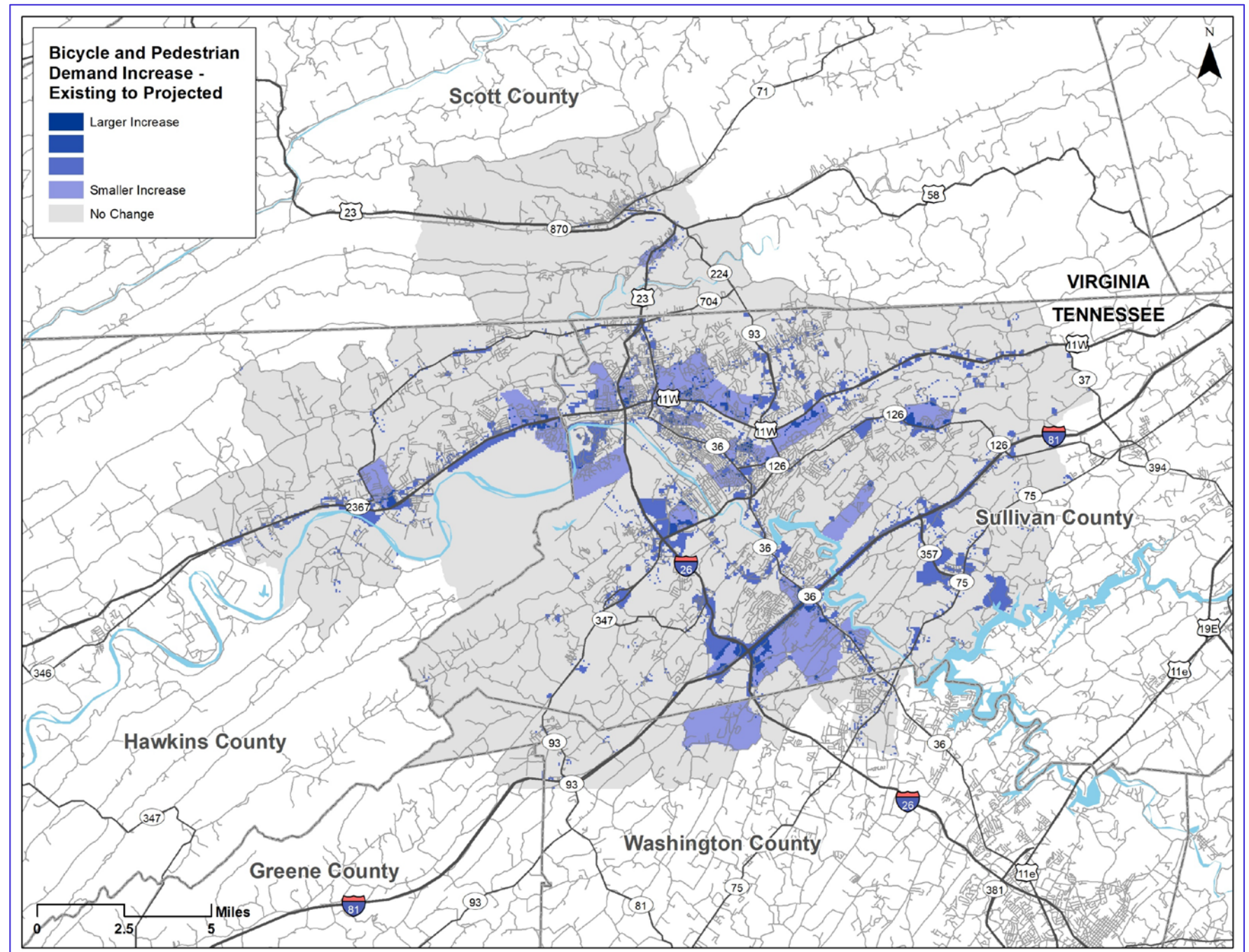
- Population density
- Employment density
- Commercial areas
- Schools / Colleges
- Parks
- Transit Stops
- O-D Zones



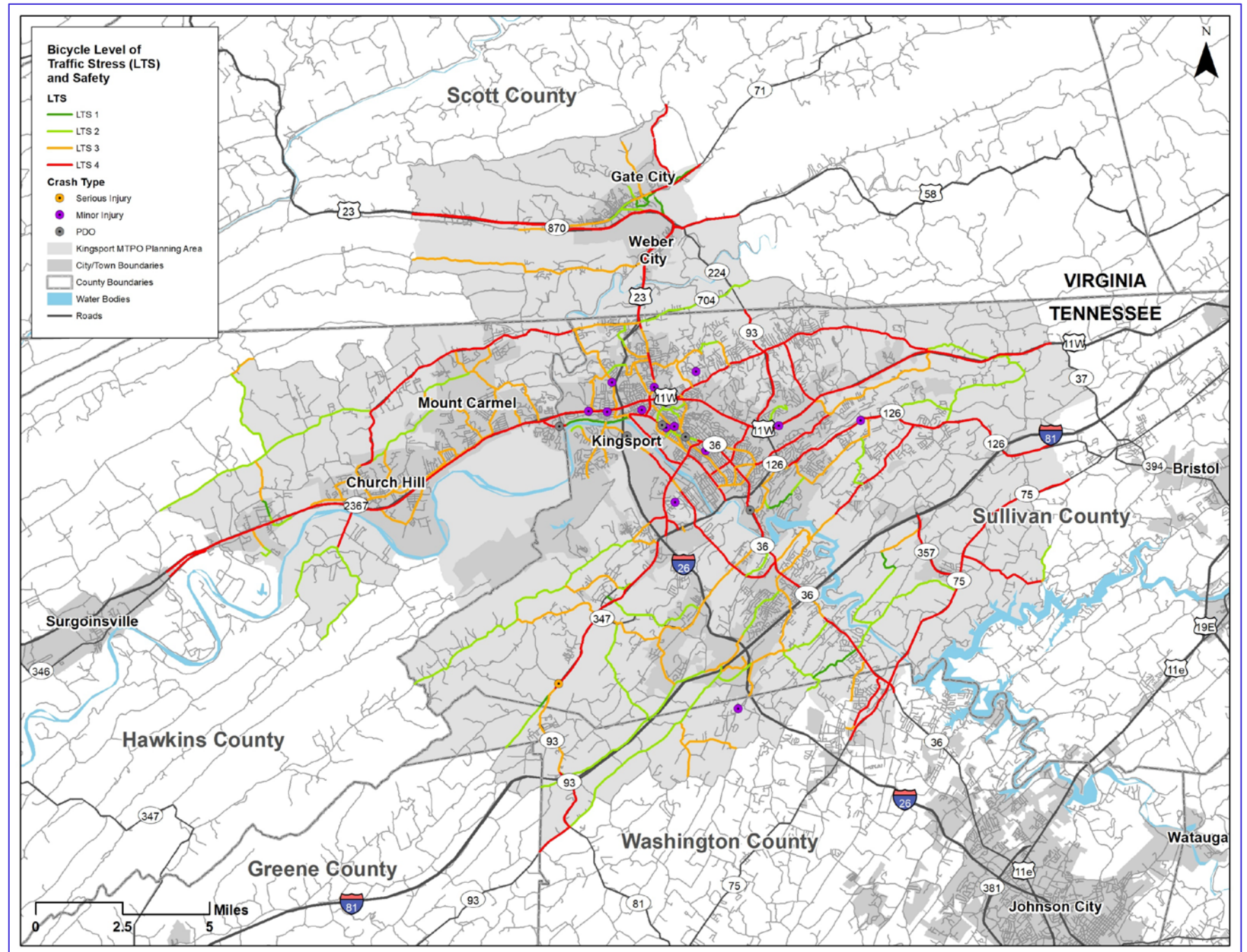
Bicycle and Pedestrian Demand – Change Over Time

Emerging Centers:

- Church Hill
- Weber City
- Meadowview
- Sullivan Gardens
- Fall Branch



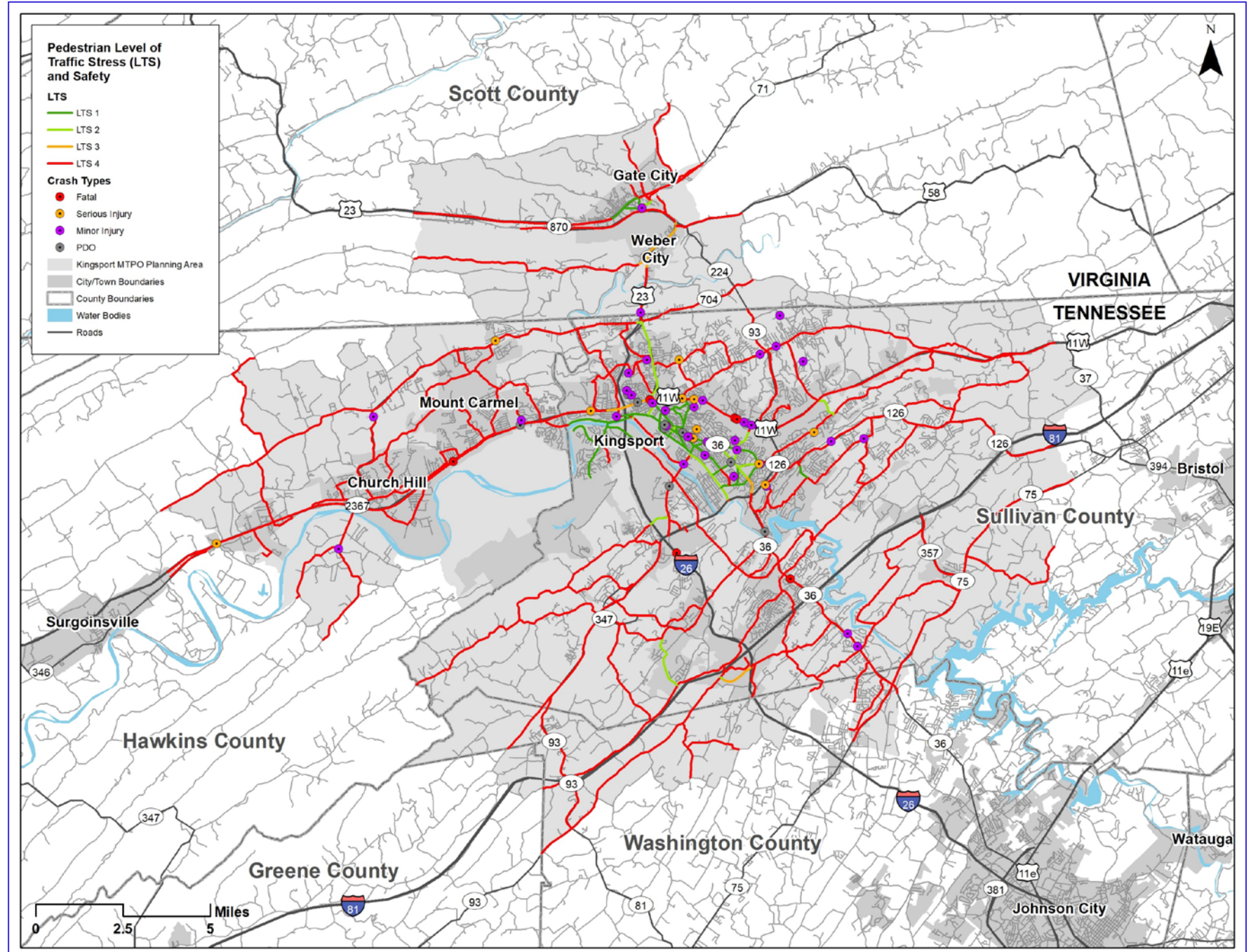
Bicycle LTS and Safety



Pedestrian LTS and Safety

Key Hotspots:

- Center Street
- US-11E



Bicycle and Pedestrian Counts



Virtual Workshop Proposal



Outreach

MTPO
Website

Traditional
Media

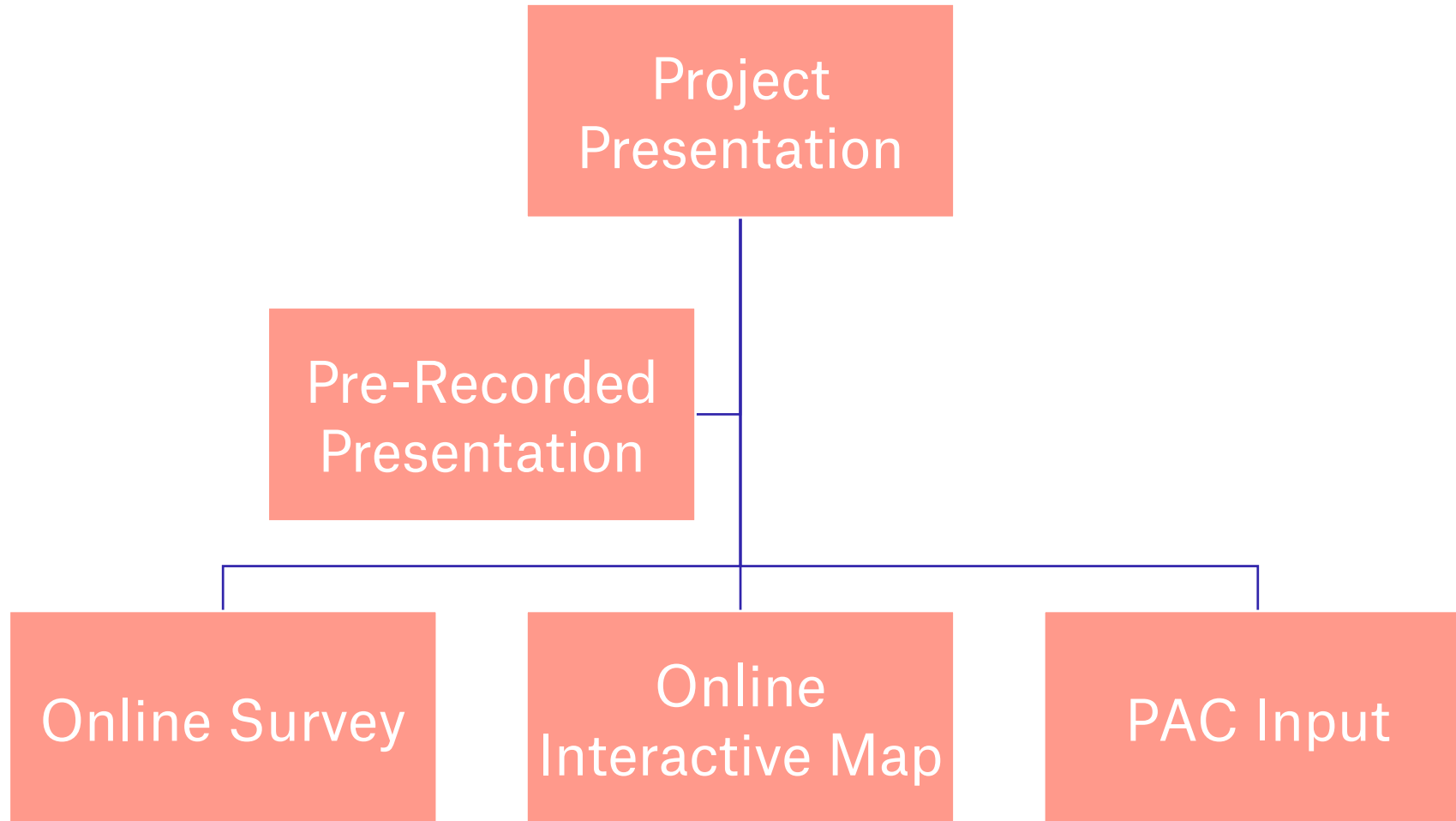
Non-
Traditional
Media

Facebook /
Social Media

PAC
Networks



Engagement



Virtual Workshop Dates



Next Steps



Next Steps

Part One: Opportunities & Challenges

Public
Involvement Plan

Vision, Goals &
Objectives

Existing
Conditions

Public
Workshop #1



Part Two: Draft Recommendations

Capital
Improvements

Design
Guidelines

Implementation
Strategies

Public
Workshop #2



Part Three: Final Plan

Draft Final Plan

Final Presentation

Final Plan

