



## STORMWATER DIVISION

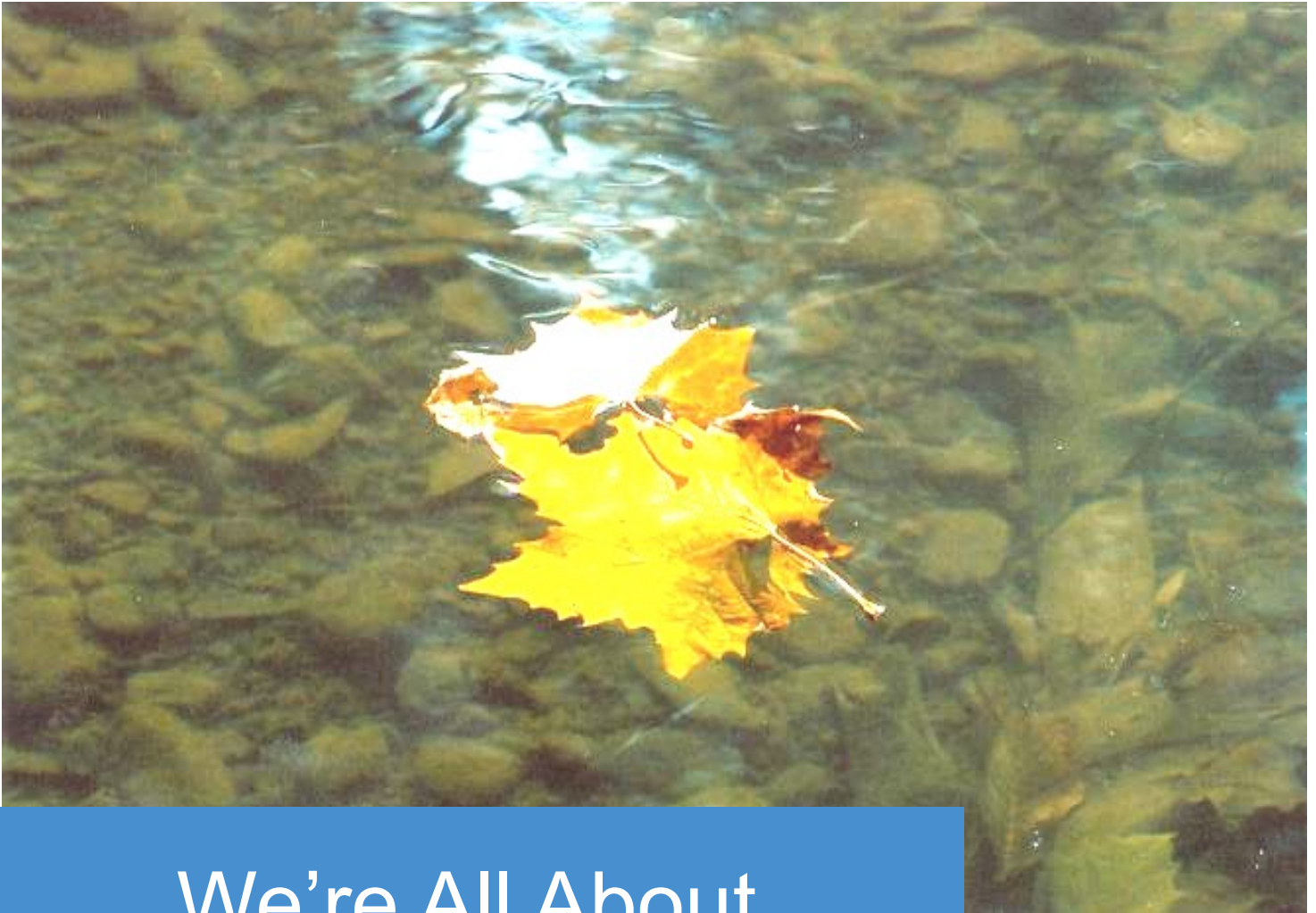
### City of Kingsport, Tennessee

---

August 24, 2020

**RE: City of Kingsport 2020 MS4 Annual Report  
For Public Review**

The public is invited to submit questions and comments regarding the City of Kingsport's 2020 MS4 Annual Report. This report is a yearly requirement of the City's MS4 permit issued by the Tennessee Department of Environment and Conservation. Please submit any questions or comments to David Edwards at [davidedwards@kingsporttn.gov](mailto:davidedwards@kingsporttn.gov).



We're All About  
**CLEAN Water**



**2020 MS4 Annual Report**

**STORMWATER MANAGEMENT**

Solutions. Accomplishments. **CLEAN Water**

# City of Kingsport Stormwater Utility

**HISTORY** November 2011 the Stormwater Management Utility was established as required by The Federal Clean Water Act for cities with more than 10,000 residents to implement a stormwater program to control and monitor polluted stormwater runoff.

---

**PURPOSE** To address stormwater pollution and flooding issues allowing the City to reduce runoff contaminants while prioritizing and initiating flood mitigation projects.

The utility is responsible for the operation, construction, maintenance and rehabilitation of stormwater facilities; for stormwater system planning, property acquisition related to stormwater management and for review of stormwater development plans for compliance with federal and state regulations, stormwater management ordinances, policies, procedures and manuals.

---

**GOALS** Comprehensively examine flooding and stormwater issues in the community;

Established resources and became a Tennessee Department of Environment and Conservation qualified local program, allowing the development community greater flexibility and timeliness in determining how best to meet federal mandates;

Adequately fund stormwater management needs at the lowest possible cost by proactive action;

Reduce flooding;

Improve stream habitat, conditions and water quality. Work toward de-listing of impaired streams within the City limits.



---

## ACTIVITIES / ACCOMPLISHMENTS

In accordance with the City's MS4 NPDES permit the Stormwater Division must file this report with the Tennessee Department of Environment and Conservation (TDEC) to document the activities completed in the past fiscal year. The activities noted are within the required program areas of the MS4 permit. The City's permit compliance activities are subject to periodic audits by TDEC.

Many activities have been completed that go beyond the requirements of the NPDES permit. This report provides opportunity for activity updates:

- Between July 1, 2019 and June 30, 2020 the Stormwater Division sponsored two separate stream clean-ups of Madd Branch. ETSU students and community volunteers collected litter and dumped items from in and around the creek. The Stormwater Division plans to sponsor at least two stream clean-ups per year.

## ACTIVITIES / ACCOMPLISHMENTS (continued)

- In September 2019 the Stormwater Division held its second annual Storm Drain Art Contest. Five storm drains were enhanced with public art, done by local amateur artists, with the purpose being environmental education. The contest, its progress, and the final artworks were publicized in the newspaper and Facebook.
- In Spring 2020 the Stormwater Division constructed and distributed 35 rain barrels to city residents. When used, these will catch stormwater runoff and utilize it for lawns and gardens. Plans are to do this project annually.
- Between July 1, 2019 and June 30, 2020 the Stormwater Division distributed stormwater educational materials to 555 4th graders.
- Between July 1, 2019 and June 30, 2020 the Stormwater Division distributed stream buffer educational materials to 240 residents. This led to the planting of a riparian buffer along a small section of Miller Branch, an impaired stream.
- In September 2019 a Stormwater Division staff member presented information to approximately 900 elementary students at Keep Kingsport Beautiful's Conservation Camp.
- In Spring 2020 the Market Street Bulb-out project created four water quality swales that provide stormwater infiltration around four existing storm drains. These swales also serve as attractive traffic calming structures.
- In 2020, one-half acre of area in Brickyard Park was planted with native trees, as part of the urban forestry program funded through the City's CIP program. This project restored riparian buffer along a small unnamed tributary of the South Fork of the Holston River, as well as removed this area from the City's landscape maintenance area, saving City resources.
- In 2020 the Stormwater Division hired Barge Design Solutions, Inc. to survey all remaining stormwater infrastructure into the GIS system.
- In 2020 the Stormwater Division hired CDM Smith, Inc. to develop a master plan for the direction of stormwater management projects.
- In 2020 the Stormwater Division installed water level monitoring stations at Cleek Road bridge and Lochwood sinkhole to monitor flooding events. Plans are to use real-time data to warn drivers of flooding, and to make improvements to structures or roadways.
- Continuation of the 'YourGOV' cell phone app has provided citizens with the ability for real time input of drainage issues and concerns. This app gives citizens a means to notify City staff of drainage problems such as clogged drains and pipes, illicit discharges, and construction site issues. 'YourGov' requests as well as any subsequent repair work by City staff is documented within the Cartegraph asset management system. Cartegraph data allow City leaders to optimize decision making processes and increase level of service to citizens.
- Continuing inspections of certain 'hot spots' before and after significant storm events are managed via the Cartegraph asset management system. Crews are dispatched to inspect and clean obstructions from culverts and catch basins that are known to trap debris.
- City stormwater employees currently hold Board of Directors and Regional Chair leadership positions with the Tennessee Stormwater Association.



ACTIVITIES / ACCOMPLISHMENTS (continued)



**Kingsport Public Works**  
Published by Amanda Martin McMullen [?] · July 11, 2019 · 🌐

Stormy visits Summer Program at Lynnvew Community Center Kingsport Parks and Recreation



270  
People Reached

21  
Engagements

Boost Post

👍 9

👍 Like    💬 Comment    ➦ Share    🌐

 Comment as Kingsport Public Works    😊 📷 📺 🗨️



**Kingsport Public Works**  
Published by Amanda Martin McMullen [?] · October 7, 2019 · 🌐

A TRUCKLOAD O' TRASH: A big thanks to ETSU Service Learning students and other volunteers for making Madd Branch a little cleaner this past Saturday!  
Keep Kingsport Beautiful



786  
People Reached

164  
Engagements

Boost Post

👍❤️ 18

👍 Like    💬 Comment    ➦ Share    🌐

4 Shares



**Kingsport Public Works**  
Published by Adrienne Batara [?] · October 14, 2019 · 🌐

"When brainstorming ideas for the design, I knew I wanted to do a memorial for the late Otto the otter at Bays Mountain Park & Planetarium. I wanted to keep his memory alive in an uplifting, informational way."

Lauren has finished her storm drain and it's such a sweet memorial for our sweet Otto. It's at the Civic Auditorium so be sure to check it out!  
#thisiskingsport #baysmountain #sweetotter



12,261  
People Reached

2,976  
Engagements

Boost Post

👍❤️ 146

👍 Like    💬 Comment    ➦ Share    🌐

12 Comments 45 Shares



We're All About  
CLEAN Water



**Kingsport Public Works**  
Published by Amanda Martin McMullen [?] · September 6, 2019 · 🌐

The STORMWATER DEPT. participated in the Keep Kingsport Beautiful Conservation Camp, with a watershed pollution demo. The event lasted 3 days and received approximately 900 4th graders!



357  
People Reached

31  
Engagements

Boost Post

👍 10

👍 Like    💬 Comment    ➦ Share    🌐

1 Share



Tennessee Department of Environment and Conservation  
Division of Water Resources  
William R. Snodgrass Tennessee Tower,  
312 Rosa L. Parks Avenue, 11th Floor, Nashville, Tennessee 37243  
1-888-891-8332 (TDEC)

Phase II Small Municipal Separate Storm Sewer System (MS4) Annual Report

1. MS4 Information

Name of MS4: City of Kingsport		MS4 Permit Number: TNS075388
Contact Person: David Edwards		Email Address: davidedwards@kingsporttn.gov
Telephone: (423) 343-9845		MS4 Program Web Address: <a href="https://www.kingsporttn.gov/water-services/stormwater/">https://www.kingsporttn.gov/water-services/stormwater/</a>
Mailing Address: 225 West Center Street		
City: Kingsport	State: TN	ZIP code: 37660

What is the current population of your MS4? 54,076

What is the reporting period for this annual report? July1 2019 to June 30 2020

2. Discharges to Waterbodies with Unavailable Parameters or Exceptional Tennessee Waters (Section 3.1)

- A. Does your MS4 discharge into waters with unavailable parameters (previously referred to as impaired) for pathogens, nutrients, siltation or other parameters related to stormwater runoff from urbanized areas as listed on TN's most current 303(d) list and/or according to the on-line state GIS mapping tool ([tdeconline.tn.gov/dwr/](http://tdeconline.tn.gov/dwr/))? If yes, attach a list. ☒ Yes ☐ No
- B. Are there established and approved TMDLs (<http://www.tn.gov/environment/article/wr-ws-tennessees-total-maximum-daily-load-tmdl-program>) with waste load allocations for MS4 discharges in your jurisdiction? If yes, attach a list. ☒ Yes ☐ No
- C. Does your MS4 discharge to any Exceptional Tennessee Waters (ETWs - [http://environment-online.tn.gov:8080/pls/enf\\_reports/f?p=9034:34304:4880790061142](http://environment-online.tn.gov:8080/pls/enf_reports/f?p=9034:34304:4880790061142))? If yes, attach a list. ☐ Yes ☒ No
- D. Are you implementing specific Best Management Practices (BMPs) to control pollutant discharges to waterbodies with unavailable parameters or ETWs? If yes, describe the specific practices: Monthly inspection frequency requirement, special pollutant abatement plans for pollutant hot spots, detailed review and approval of stormwater pollution prevention plans, riparian buffer tree planting, bioretention islands, buffer property deed restrictions. ☒ Yes ☐ No

3. Public Education/Outreach and Involvement/Participation (Sections 4.2.1 and 4.2.2)

- A. Have you developed a Public Information and Education plan (PIE)? ☒ Yes ☐ No
- B. Is your public education program targeting specific pollutants and sources, such as Hot Spots? If yes, describe the specific pollutants and/or sources targeted by your public education program: MS4 and construction site runoff, illicit discharges including septage, sediment, oil and grease, applicators of pesticides, herbicides, and fertilizer, vehicle related fluids and illegal dumping. ☒ Yes ☐ No
- C. Do you have a webpage dedicated to your stormwater program? If yes, provide a link/URL: <https://www.kingsporttn.gov/water-services/stormwater/> ☒ Yes ☐ No

## Phase II Small Municipal Separate Storm Sewer System (MS4) Annual Report

- D. Summarize how you advertise and publicize your public education, outreach, involvement and participation opportunities: Website, Facebook, public notices, billboards, newspaper articles, TNSA, and distribution of materials.
- E. Summarize the public education, outreach, involvement and participation activities you completed during this reporting period: Stormy visits Lynnvew Community Center during its Summer Program; Presenter at Keep Kingsport Beautiful Conservation Camp; 2nd Annual Storm Drain Art Contest; Madd Branch Stream Cleanup; Mailed out stream buffer brochures to residents along impaired streams; Distribution of activity booklets to 4th graders; Rain Barrel Program.
- F. Summarize any specific successful outcome(s) (e.g., citizen involvement, pollutant reduction, water quality improvement, etc.) fully or partially attributable to your public education and participation program during this reporting period: Educating children about stormwater, distribution of 35 rainbarrels to residents, education of general public thru storm drain art, volunteers cleaning up litter along streams, replanting of riparian buffer on church property.

### 4. Illicit Discharge Detection and Elimination (Section 4.2.3)

- A. Have you developed and do you continue to update a storm sewer system map that shows the location of system outfalls where the municipal storm sewer system discharges into waters of the state or conveyances owned or operated by another MS4? ☒ Yes ☐ No
- B. If yes, does the map include inputs into the storm sewer collection system, such as the inlets, catch basins, drop structures or other defined contributing points to the sewershed of that outfall, and general direction of stormwater flow? ☒ Yes ☐ No
- C. How many outfalls have you identified in your storm sewer system? 975
- D. Do you have an ordinance, or other regulatory mechanism, that prohibits non-stormwater discharges into your storm sewer system? ☒ Yes ☐ No
- E. Have you implemented a plan to detect, identify and eliminate non-stormwater discharges, including illegal disposal, throughout the storm sewer system? If yes, provide a summary: Education of the public and targeted employees. Implementing standard operating procedures for municipal operations. Complaint tracking, site plan review, and inspections. ☒ Yes ☐ No
- F. How many illicit discharge related complaints were received this reporting period? 3
- G. How many illicit discharge investigations were performed this reporting period? 3
- H. Of those investigations performed, how many resulted in valid illicit discharges that were addressed and/or eliminated? 2

### 5. Construction Site Stormwater Runoff Pollutant Control (Section 4.2.4)

- A. Do you have an ordinance or other regulatory mechanism requiring:
- Construction site operators to implement appropriate erosion prevention and sediment control BMPs consistent with those described in the TDEC EPSC Handbook? ☒ Yes ☐ No
- Construction site operators to control wastes such as discarded building materials, concrete truck washout, chemicals, litter, and sanitary waste? ☒ Yes ☐ No

## Phase II Small Municipal Separate Storm Sewer System (MS4) Annual Report

Design storm and special conditions for unavailable parameters waters or Exceptional Tennessee Waters consistent with those of the current Tennessee Construction General Permit (TNR100000)? ☒ Yes ☐ No

B. Do you have specific procedures for construction site plan (including erosion prevention and sediment BMPs) review and approval? ☒ Yes ☐ No

C. Do you have sanctions to enforce compliance? ☒ Yes ☐ No

D. Do you hold pre-construction meetings with operators of priority construction activities and inspect priority construction sites at least monthly? ☒ Yes ☐ No

E. How many construction sites disturbing at least one acre or greater were active in your jurisdiction this reporting period? 36

F. How many active priority and non-priority construction sites were inspected this reporting period? 36

G. How many construction related complaints were received this reporting period? 7

### 6. Permanent Stormwater Management at New Development and Redevelopment Projects (Section 4.2.5)

A. Do you have a regulatory mechanism (e.g. ordinance) requiring permanent stormwater pollutant removal for development and redevelopment projects? If no, have you submitted an Implementation Plan to the Division? ☒ Yes ☐ No  
☐ Yes ☐ No

B. Do you have an ordinance or other regulatory mechanism requiring:  
Site plan review and approval of new and re-development projects? ☒ Yes ☐ No

A process to ensure stormwater control measures (SCMs) are properly installed and maintained? ☒ Yes ☐ No

Permanent water quality riparian buffers? If yes, specify requirements: Refer to Ordinance Section 38-169(d) and Chapter 6 of the Stormwater Management Manual. ☒ Yes ☐ No

C. What is the threshold for development and redevelopment project plans plan review (e.g., all projects, projects disturbing greater than one acre, etc.)? All projects

D. How many development and redevelopment project plans were reviewed for this reporting period? 22

E. How many development and redevelopment project plans were approved? 12

F. How many permanent stormwater related complaints were received this reporting period? 2

G. How many enforcement actions were taken to address improper installation or maintenance? 2

H. Do you have a system to inventory and track the status of all public and private SCMs installed on development and redevelopment projects? ☒ Yes ☐ No

I. Does your program include an off-site stormwater mitigation or payment into public stormwater fund? If yes, specify. \_\_\_\_\_ ☐ Yes ☒ No

### 7. Stormwater Management for Municipal Operations (Section 4.2.6)

A. As applicable, have stormwater related operation and maintenance plans that include information related to maintenance activities, schedules and the proper disposal of waste from structural and non-structural stormwater controls been developed and implemented at the following municipal operations:

Streets, roads, highways? ☒ Yes ☐ No

Municipal parking lots? ☒ Yes ☐ No



Phase II Small Municipal Separate Storm Sewer System (MS4) Annual Report

- |   |   |  |
|---|---|--|
| Maintenance and storage yards?  | <input checked="" type="checkbox"/> Yes | <input type="checkbox"/> No            |
| Fleet or maintenance shops with outdoor storage areas?  | <input checked="" type="checkbox"/> Yes | <input type="checkbox"/> No            |
| Salt and storage locations?   | <input checked="" type="checkbox"/> Yes | <input type="checkbox"/> No            |
| Snow disposal areas?  | <input type="checkbox"/> Yes            | <input checked="" type="checkbox"/> No |
| Waste disposal, storage, and transfer stations?   | <input checked="" type="checkbox"/> Yes | <input type="checkbox"/> No            |
| <br>B. Do you have a training program for employees responsible for municipal operations at facilities within the jurisdiction that handle, generate and/or store materials which constitute a potential pollutant of concern for MS4s? |   |  |
|   | <input checked="" type="checkbox"/> Yes | <input type="checkbox"/> No            |
| <br>If yes, are new applicable employees trained within six months, and existing applicable employees trained and/or retrained within the permit term?  |   |  |
|   | <input checked="" type="checkbox"/> Yes | <input type="checkbox"/> No            |

8. Reviewing and Updating Stormwater Management Programs (Section 4.4)

- A. Describe any revisions to your program implemented during this reporting period including but not limited to:
- Modifications or replacement of an ineffective activity/control measure. N/A
- Changes to the program as required by the division to satisfy permit requirements. N/A
- Information (e.g. additional acreage, outfalls, BMPs) on newly annexed areas and any resulting updates to your program. No newly annexed areas
- B. In preparation for this annual report, have you performed an overall assessment of your stormwater management program effectiveness? If yes, summarize the assessment results, and any modifications and improvements scheduled to be implemented in the next reporting period. Stormwater Management Plan available upon request
- |  |   |                             |
|--|---|-----------------------------|
|  | <input checked="" type="checkbox"/> Yes | <input type="checkbox"/> No |
|--|---|-----------------------------|

9. Enforcement Response Plan (Section 4.5)

- A. Have you implemented an enforcement response plan that includes progressive enforcement actions to address non-compliance, and allows the maximum penalties specified in TCA 68-221-1106? If no, explain. \_\_\_\_\_ ☒ Yes ☐ No
- B. As applicable, identify which of the following types of enforcement actions (or their equivalent) were used during this reporting period; indicate the number of actions, the minimum measure (e.g., construction, illicit discharge, permanent stormwater management), and note those for which you do not have authority:

<u>Action</u>	<u>Construction</u>	<u>Permanent Stormwater</u>	<u>Illicit Discharge</u>	<u>In Your ERP?</u>	
Verbal warnings	# <u>24</u>	# <u>4</u>	# <u>3</u>	<input checked="" type="checkbox"/> Yes	<input type="checkbox"/> No
Written notices	# <u>4</u>	# <u>1</u>	# _____	<input checked="" type="checkbox"/> Yes	<input type="checkbox"/> No
Citations with administrative penalties	# <u>2</u>	# <u>1</u>	# _____	<input checked="" type="checkbox"/> Yes	<input type="checkbox"/> No
Stop work orders	# <u>3</u>	# _____	# _____	<input checked="" type="checkbox"/> Yes	<input type="checkbox"/> No
Withholding of plan approvals or other authorizations	# <u>2</u>	# _____	# _____	<input checked="" type="checkbox"/> Yes	<input type="checkbox"/> No
Additional Measures	# <u>1</u>	# _____	# _____	Describe: <u>TDEC enforcement involvement with Mike Bailey</u>	

- C. Do you track instances of non-compliance and related enforcement documentation? ☒ Yes ☐ No
- D. What were the most common types of non-compliance instances documented during this reporting period?  
Inadequate EPSC installation and maintenance

10. Monitoring, Recordkeeping and reporting (Section 5)

- A. Summarize any analytical monitoring activities (e.g., planning, collection, evaluation of results) performed during this reporting period. October 2019: E. Coli, benthic, habitat survey, physical parameters, flow on Clark Branch, Kendrick Creek, Leslie Branch, Little Horse Creek, Madd Branch, Miller Branch, Reedy Creek, and Tranbarger Branch. April 2020: E. Coli/nutrients, benthic, habitat survey, physical parameters, flow on Gaines Branch, Gravelly Branch, Horse Creek, Rock Springs Branch, and Unnamed Tributary to Reedy Creek. Data available upon request.
- B. Summarize any non-analytical monitoring activities (e.g., planning, collection, evaluation of results) performed during this reporting period. Visual Stream Assessments of Reedy Creek (July 2019) and Horse Creek (August 2019). Outfall Inspections of Dry Hollow, Slate Branch, and several unnamed tributaries - 154 total outfalls inspected. Data available upon request.
- C. If applicable, are monitoring records for activities performed during this reporting period submitted with this report. ☐ Yes ☒ No

11. Certification

## Phase II Small Municipal Separate Storm Sewer System (MS4) Annual Report

This report must be signed by a ranking elected official or by a duly authorized representative of that person. See signatory requirements in sub-part 6.7.2 of the permit.

*"I certify under penalty of law that this document and all attachments were prepared under my direction or supervision in accordance with a system designed to assure that qualified personnel properly gather and evaluate the information submitted. Based on my inquiry of the person or persons who manage the system, or those persons directly responsible for gathering the information, the information submitted is, to the best of my knowledge and belief, true, accurate, and complete. I am aware that there are significant penalties for submitting false information, including the possibility of fine and imprisonment for knowing violations."*

Patrick W. Shull, Mayor

Printed Name and Title

Signature

Date

Annual reports must be submitted by September 30 of each calendar year (Section 5.4) to the appropriate Environmental Field Office (EFO), identified in the table below:

EFO	Street Address	City	Zip Code	Telephone
Chattanooga	1301 Riverfront Pkwy, Suite 206	Chattanooga	37402	(423) 634-5745
Columbia	1421 Hampshire Pike	Columbia	38401	(931) 380-3371
Cookeville	1221 South Willow Ave.	Cookeville	38506	(931) 520-6688
Jackson	1625 Hollywood Drive	Jackson	38305	(731) 512-1300
Johnson City	2305 Silverdale Road	Johnson City	37601	(423) 854-5400
Knoxville	3711 Middlebrook Pike	Knoxville	37921	(865) 594-6035
Memphis	8383 Wolf Lake Drive	Bartlett	38133	(901) 371-3000
Nashville	711 R S Gass Boulevard	Nashville	37216	(615) 687-7000