



**THOMPSON  
& LITTON** EST.  
1956

ENGINEERS ARCHITECTS SURVEYORS



**ADDENDUM NO. 003**

**TO:** All Plan Holders

**RE:** Dobyms-Bennett High School  
Phase 1 Renovation  
Project 19800

**DATE:** 5-6-2026

The original Specifications and Drawings dated 4/16/2026, for the above referenced project are amended as noted in this Addendum Number Three. Receipt of this Addendum Number Three should be acknowledged by completing the Bid Form section referring to receipt of Addenda. This Addendum consists of six (6) pages and eight (8) attachments.

**GENERAL**

**ADD 3-1** Based on a question concerning the removal of wall mounted items in the work areas on the demolition drawings, please see the following:

The Owner will remove all existing wall mounted TV's, AED, posters, papers, artwork, plaques, hand sanitizers, and fire extinguishers along with the furniture and miscellaneous items (Books, classroom/office supplies, etc.) in the work areas prior to the beginning of construction. The existing marker and tack boards in the construction area are to remain in their current locations except as noted on A102B SECOND FLOOR PLAN - EAST WING due to the new classroom work in that area.

Any other wall mounted items noted on the demolition drawings such as shelving, wall display rails, countertops, etc. are to be removed ONLY if the contractors feel it is necessary. If the contractors feel that those items can remain in place and be painted around (Or the flooring can be installed with them in place) then those items can be left in their current location.

As a clarification, the existing clocks are to remain except for what is identified as part of Alternate No. 4.

As a clarification, the existing directional signage is to remain except for what is identified as part of Alternate #5. The General Contractor is to make sure that the removal of this existing directional signage is included as an addition to what is already noted in Alternate #5 for the new directional signage.

As a clarification, the existing room signage is to remain except for what is identified as part of Alternate #6 in the area identified on A102B SECOND FLOOR PLAN - EAST WING.



5-6-2026

Page 2

## DRAWINGS

ADD 3-2 Refer to drawing AD102B SECOND FLOOR DEMOLITION PLAN – EAST WING and A102B SECOND FLOOR PLAN – EAST WING. Please note, at the entry to the East Wing during construction, that the General Contractor will need to install a temporary partition in order to close off this area while the work occurs. The General Contractor is to assume a wall that is approximately 9'-0" long.

ADD 3-3 Refer to AD105B SECOND FLOOR DEMOLITION REFLECTED CEILING PLAN – EAST WING. Please note that the existing ceiling mounted mechanical units that are shown to be removed are to have the existing piping remain. Cap the existing piping above the ceiling at the location of the existing mechanical unit once it is removed. These units are currently not used.

ADD 3-4 Refer to A101A FIRST FLOOR PLAN – WEST WING. Based on a question/comment from the owner please see the following:

During the month of July, around Fun Fest, the owner will need access to the Balcony section of the Little Theater. The Owner and General Contractor will need to coordinate when the work to the Corridor outside of the Balcony can occur and still allow the owner temporary access to that area.

ADD 3-5 Refer to A101A FIRST FLOOR PLAN – WEST WING, A101B FIRST FLOOR PLAN – EAST WING, A102A SECOND FLOOR PLAN – WEST WING, A102B SECOND FLOOR PLAN – EAST WING, and A402 ENLARGED CLASSROOM INTERIOR ELEVATIONS. Based on a question concerning the new Corridor countertops noted on the plan sheets – ITEM 16 or 18, please see the below and attached revised sheets A101A FIRST FLOOR PLAN – WEST WING, A101B FIRST FLOOR PLAN – EAST WING, A102A SECOND FLOOR PLAN – WEST WING, A102B SECOND FLOOR PLAN – EAST WING.

To confirm, these need to be ITEM 16 which says, "NEW WALL MOUNTED COUNTERTOPS – REFER TO SHEET A402". Please note that those countertops correspond to detail 8/A402.

Also on A101A FIRST FLOOR PLAN – WEST WING, A101B FIRST FLOOR PLAN – EAST WING, A102A SECOND FLOOR PLAN – WEST WING, A102B SECOND FLOOR PLAN – EAST WING it notes under NEW PLAN LEGEND the following:

ALT4 – NEW ROOM SIGNAGE TO BE INSTALLED BY CONTRACTOR.



5-6-2026

Page 3

Please change to say :

ALT6 – NEW ROOM SIGNAGE TO BE INSTALLED BY CONTRACTOR.

This only applies to the work shown on A102B SECOND FLOOR PLAN – EAST WING as all other existing room signage is to be remain in place.

ADD 3-6 Refer to drawing A102B SECOND FLOOR PLAN – EAST WING and A402 ENLARGED CLASSROOM INTERIOR ELEVATIONS. Please note that in CLASSROOM E205 that the casework on the East wall is new casework. Please see 1/A402 INT. ELEV. – CLASSROOMS E203 & E204 KITCHENETTE, TYP. detail and add CLASSROOM E205 to this detail for the new casework.

For the 3 casework locations in Classrooms E203, E204, and E205 which are shown to have the range hood and the electric cooktop, we will be providing the following:

RESIDENTIAL HOOD - Provide and install Broan-Nutone F40000 series under-cabinet range hood over range top - Hood fan to be installed for air recirculation. Provide with charcoal recirculation filter. color to be per the manufacturer's full range and provide all power to this item in the scope. Please see the attached for this item.

Provide and install Guardian Safety Solutions G500-B Hood Fire Suppression System. Include hardwired shutoff for range power and G502-INT Interface for connection to building power and fire alarm. Please see the attached for this item.

DROP-IN STOVE – Provide 3KW cooktop equivalent to Frigidaire FFEC3025UB in the countertops of classrooms E203, E204, and E205. Plug connect in base of cabinet with NEMA 6-30R cordset. Coordinate requirements with manufacturer - Run 2-#12, #12G in ¾" C to 208V, 25A/2P breakers for each cooktop in Panel LA. Make connections to range hood specified with 2-#12, #12G in ¾"C to 20A/1P breaker in panel LA. Combine all fans on common circuit.

Please include an allowance of \$4,000.00 (Four Thousand Dollars) each in Classrooms E203, E204, and E205 to address any unforeseen items based on the above noted work.

ADD 3-7 Refer to A102B SECOND FLOOR PLAN – EAST WING and A601 PARTITION TYPES, AND DOOR AND WINDOW SCHEDULE. Based on a question, the height of the new masonry walls on the drawings is not clear. Please note to take the



5-6-2026

Page 4

new masonry walls up to the concrete roof deck – This should be approximately 5'-0" above the ceiling elevation in the new classrooms.

As a clarification, between Classrooms E212 and E213 and E213 and E214, the new walls are to be NON-RATED PARTITION TYPE C. And the walls around E203B, E204B, and E205B should also be NON-RATED PARTITION TYPE C – Except for the chase wall which is NON-RATED PARTITION TYPE E. The chase wall (NON-RATED PARTITION TYPE E) can go to 6" above the new ceiling height.

Also, please note that the cores which have the vertical bars dowelled into the floor slab are to have those cores grout filled. In NON-RATED PARTITION TYPE E, please fill those cores to the top of the wall at 4'-0" O.C. horizontal.

ADD 3-8 Refer to A105B SECOND FLOOR REFLECTED CEILING PLAN – EAST WING. Please see the attached sheet A105B SECOND FLOOR REFLECTED CEILING PLAN – EAST WING which revises and coordinates the new ceiling mounted items in the new classrooms.

ADD 3-9 Refer to A401 ENLARGED BATHROOM PLANS AND INTERIOR ELEVATIONS. Please see the attached revised sheet A401 ENLARGED BATHROOM PLANS AND INTERIOR ELEVATIONS which addresses changes to 1/A401, 2/A401, 5/A401, and 6/A401 - Additional notes in the restrooms and changes to the locations of the sprinkler heads.

ADD 3-10 Refer to A401 ENLARGED BATHROOM PLANS AND INTERIOR ELEVATIONS. On 13/A401 it notes "WALL MOUNTED SHELVES". Please note that the General Contractor is to provide wire shelves which are mounted to the walls in these areas.

ADD 3-11 Refer to P001 PLUMBING NOTES, SPECIFICATIONS, DETAILS, & LEGEND and SECTION 10 2800 TOILET, BATH, AND LAUNDRY ACCESSORIES.

On the specification, it notes to provide "SH-1 AQUATIC 60X34 16034TRCOL ACRYLIC ALCOVE, CENTER DRAIN, 1 PIECE ROLL-IN SHOWER, ADA COMPLIANT WITH SEAT, HANDHELD SHOWER ASSEMBLY, MIXING VALVE, GRAB BARS".

Per the previous addendum, the acrylic alcove was removed with tile being provided in these areas instead. Please note to provide the center drain, shower controls including the handheld shower assembly, mixing valve, shower mounted grab bars, shower seat, shower curtain rod, and shower curtain in the project cost.



5-6-2026

Page 5

ADD 3-12 Refer to M001 MECHANICAL NOTES AND LEGENDS. Please see the below for the voltage for the new mechanical units based on discussions between the electrical and mechanical engineers:

Disregard the voltage indicated in schedule and model number for all HVAC equipment. - All units shall operate on 208V/3 phase power.

ADD 3-13 Refer to M101 MECHANICAL PLAN. Under KEYED NOTES: on this plan ITEM 8 addresses the exact location for the exterior wall penetrations for the new exterior mechanical units. Please note that these openings should be approximately 34" Wide x 29" Tall. Please confirm the exact location of these openings with the Architect and Owner prior to completing the work.

Please provide the following for the lintels at these new masonry openings:

Provide L3-1/2 x 3-1/2 x 1/4 Brick Angle bearing 8" minimum each end of the cut opening.

Provide 1/4" (x applicable CMU wythe width) steel plates across the "head", each "jamb" and "sill" of the cut openings / HVAC penetration openings, forming a steel plate "box" around the applicable penetration.

ADD 3-14 Refer to E203 SECOND FLOOR EAST WING POWER PLAN. Please modify SHEET KEYED NOTES: ITEM 1 to say the following:

Route 3-#8, #10G in 1" c to new 50A/3P breaker in existing panel 26 in first floor corridor below. Make connections to new 30KVA, 480-208/120V transformer, suspended from structure above ceiling. field verify routing and breaker suitability. make secondary connections between transformer and panel 1a using 4-#3, #8G in 1-1/4" C.

### SPECIFICATIONS

ADD 3-15 Refer to SECTION 01 2100 ALLOWANCES. Please note to provide the following allowances for the below alternates:

Alternate #1 - Include an amount of \$10,000.00 (Ten Thousand Dollars) for unforeseen conditions directed by the architect.

Alternate #2 - Include an amount of \$10,000.00 (Ten Thousand Dollars) for unforeseen conditions directed by the architect.



Addendum No. 003  
Dobyns-Bennett High School  
Phase 1 Renovation

5-6-2026

Page 6

Alternate #4 – Include an amount of \$3,000.00 (Three Thousand Dollars) for unforeseen conditions directed by the architect.

Alternate #6 – Include an amount of \$3,000.00 (Three Thousand Dollars) for unforeseen conditions directed by the architect.

Alternate #7 – Include an amount of \$2,000.00 (Two Thousand Dollars) for unforeseen conditions directed by the architect.

Alternate #8 – Include an amount of \$1,000.00 (One Thousand Dollars) for unforeseen conditions directed by the architect.

Alternate #9A – Include an amount of \$5,000.00 (Five Thousand Dollars) for unforeseen conditions directed by the architect.

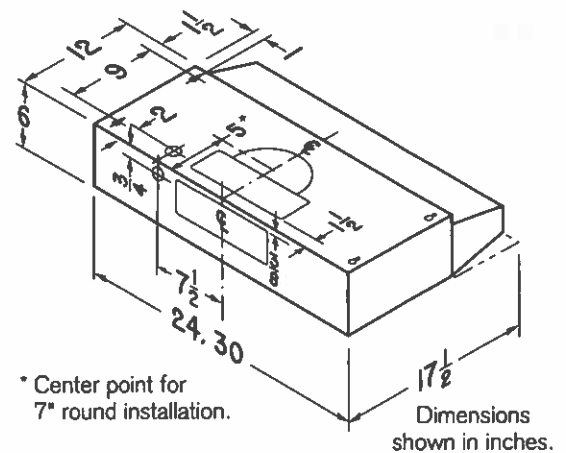
Alternate #9B – Include an amount of \$5,000.00 (Five Thousand Dollars) for unforeseen conditions directed by the architect.

END OF ADDENDUM NO. 003

Designed with simplicity in mind, the F40000 range hood models are made to exacting standards and offer the most for the money.

SIZE	WHITE ON WHITE	BLACK	STAINLESS FINISH	STAINLESS	GREASE FILTER (replacement)	NON-DUCT CHARCOAL FILTER
24 in.	F402411	F402423	F4024SF	F402404	BP29	41F
30 in.	F403011	F403023	F4030SF	F403004	BP29	41F
36 in.	F403611	F403623	F4036SF	F403604	BP29	41F

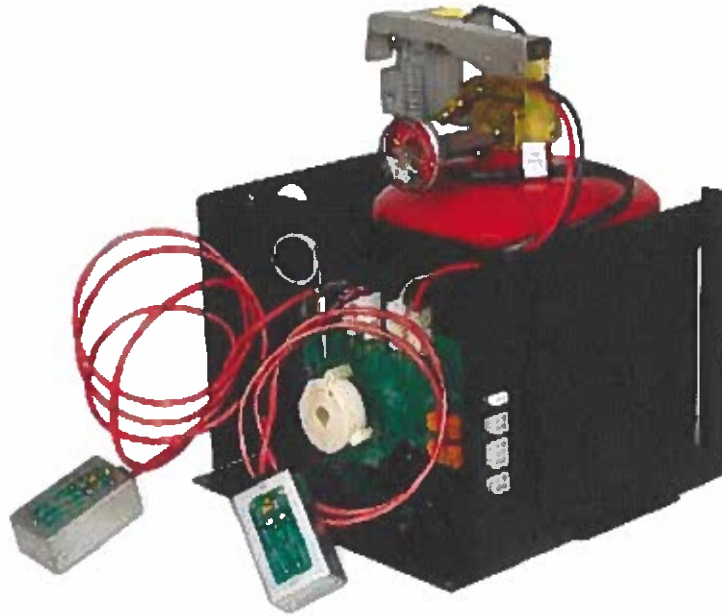
FEATURES	
Max. Blower CFM†	230
Control type	2-speed rocker switch
Delay off	no
Filter Clean Reminder	no
Heat Sentry™	no
Lighting	1-level intensity Designed for LED bulb (not included) A19, E26 base. If using incandescent bulb, 75 Watts max, purchase optional light guard #S99110437.
Grease Filter	Aluminum (Qty. 1)
ENERGY STAR®	no
Recirculation	Charcoal filter sold separately
ADA Compatible	yes
Duct Direction	Vertical (7 in. round - damper sold separately) Vertical/Horizontal (3-1/4 in. x 10 in. - damper included)
AC INPUT	
120 V, 60 Hz - 2.5 AMPS	
OPTIONAL ACCESSORIES	
3/4 in. x 10 in. to 6-in. Round Duct Transition	411
7-in. Round Damper	BP87Q
7-in. Round Adapter Plate	SR680508
Electrical Cord Kit	HCK44
ADA Wiring Kit	HAWSK3
MOUNTING HEIGHT	
18 in. to 24 in. from cooktop to bottom of hood	
LIMITED WARRANTY	
1-year (See installation manual for full warranty text.)	
FOR INDOOR USE ONLY	



† Max. blower CFM indicates the performance of the hood blower in open air and is not HVI certified.



# Model G500-B



## Superior Fire Suppression for Commercial Occupancies Where Residential Style Appliances Are in Use

Over 400,000 systems installed  
and supported by our distributors  
worldwide since 1985



[www.guardianssi.com](http://www.guardianssi.com)

# Specifications:

---

Model G500-B

**Operation:** Electronic

**Coverage:**

Electric Ranges up to 42" wide x 24" deep  
or 1,008 sqi.

Gas Ranges 36" wide x 24" deep or 864 sqi.

**Hood:**

Any standard residential hood with a single light and fan in the center that meets the same range size requirements. Bottom of the hood must have a minimum height of 18" to the range and cannot exceed 30".

**Nozzles:**

Requires a minimum height of 18" from the tip of the nozzle to the range and a maximum of 31".

**Sensors:**

New plug and play sensors that require a minimum height of 22" from the sensor to range and a maximum of 35".

**Circuit Board:**

New and improved circuit board with plug and play features.

**Fuel Shutoff:**

Each system is UL Listed with a gas or electric fuel shutoff, which is supplied, and can be wired or wirelessly installed.

## Pre-Assembled • Pre-Engineered

When a fire occurs, the sensors will activate at a preset temperature sending a signal to the CPU board which releases the valve assembly discharging the system.

Selective code officials recommend and accept the Guardian System for commercial occupancies where residential appliances are in use.

[www.guardianssi.com](http://www.guardianssi.com)



UL Subject 300A, UL 299, UL 864, NFPA 10  
See ICC-ES Listing, No. 1166 at [www.icc-es-pmg.org](http://www.icc-es-pmg.org)

